

Electronic Supplementary Information

of

Supramolecular Polymer Micelles Prepared by Steric Effect Tuned Self-assembly:

A New Strategy for Self-assembly

5

Yong-Yong Li,^{a,b} Hai-Qing Dong,^{a,b} Yun Liu,^a Han Cheng,^a Cao Li,^a Wang Xiao,^a Cong Chang,^a
Shou-Hu Hua,^a Xuan Zeng,^a Si-Xue Cheng,^a Xian-Zheng Zhang*,^a and Ren-Xi Zhuo^a

^a *Key Laboratory of Biomedical Polymers of Ministry of Education & Department of Chemistry,*

10

Wuhan University, Wuhan 430072, P. R. China

^b *The Institute for Advanced Materials and Nano Biomedicine, Tongji University, Shanghai 200092, P.*

R. China

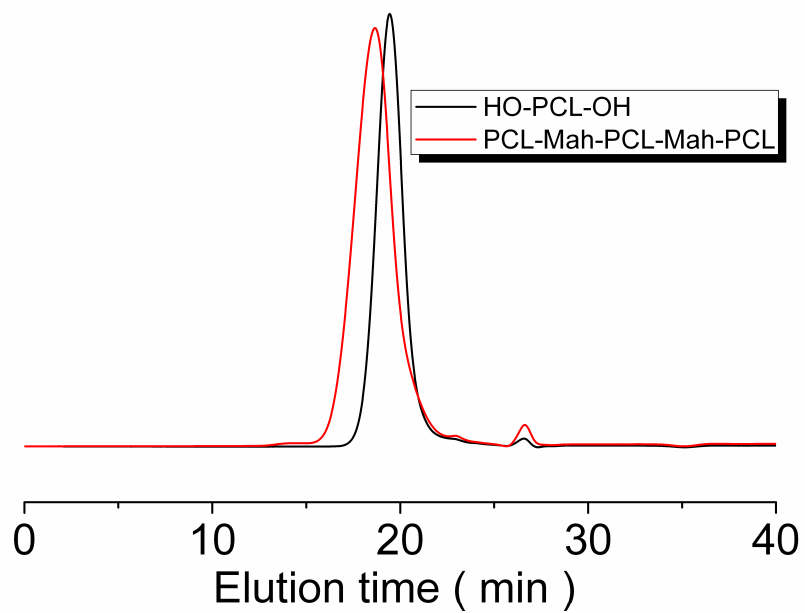
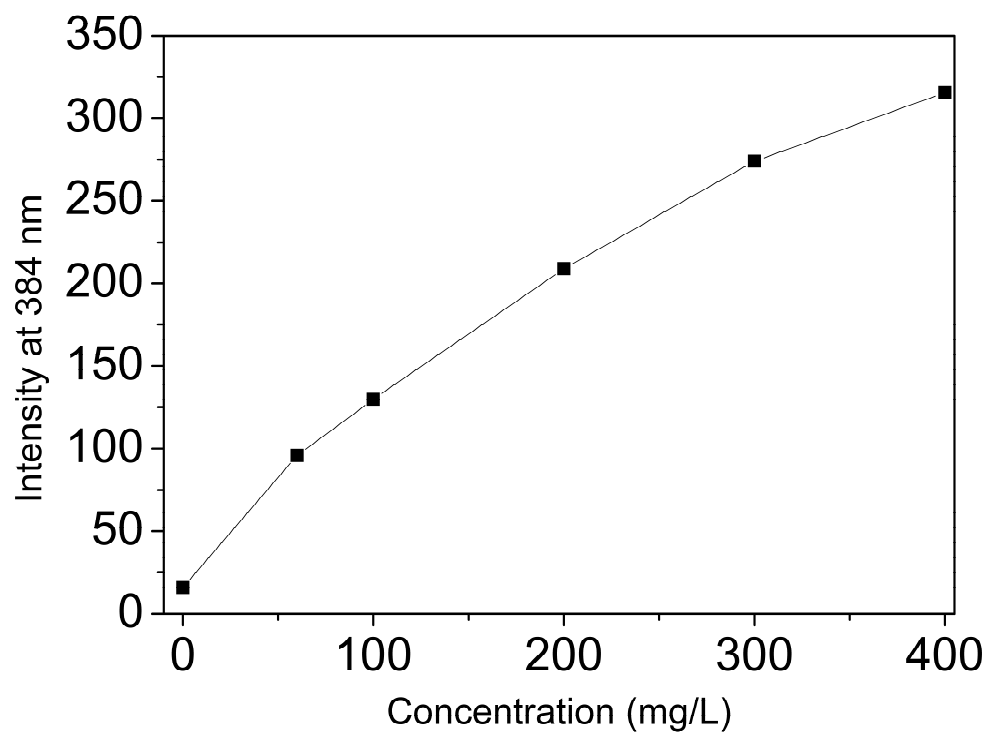


Figure S1: GPC traces of HO-PCL-OH and PCL-Mah-PCL-Mah-PCL.



5 Figure S2: Emission intensity of pyrene at 384 nm with different concentrations of freeze-dried α -CD/PCL-Dox-PCL-Dox-PCL SMPMs.

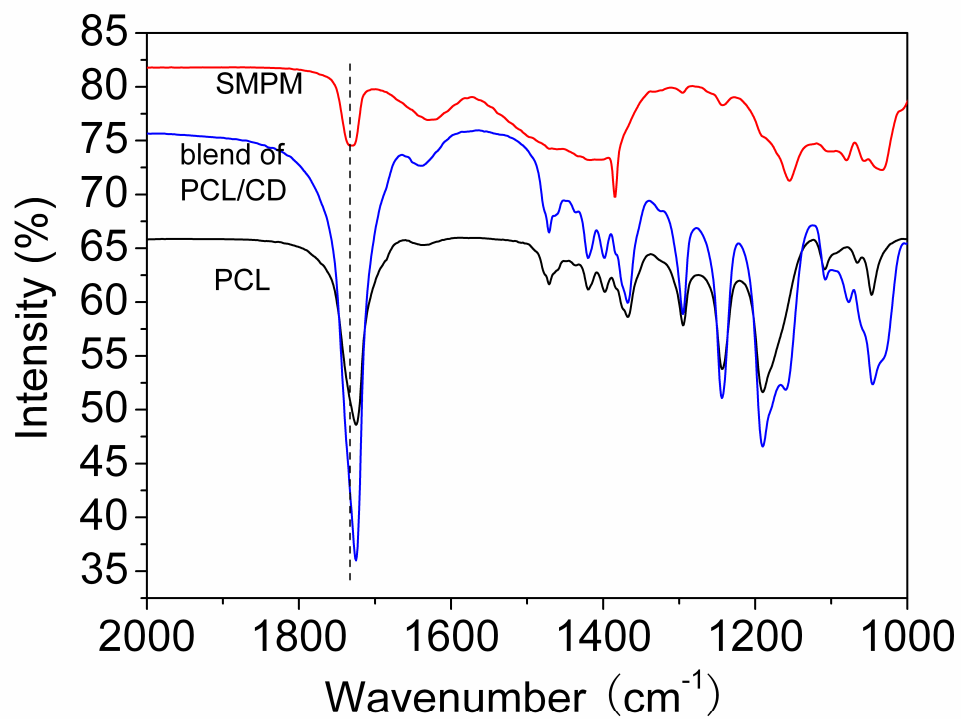


Figure S3: FT-IR spectra of SMPMs, PCL-Dox-PCL-Dox-PCL, and the blend of PCL-Dox-PCL-Dox-PCL and CD.

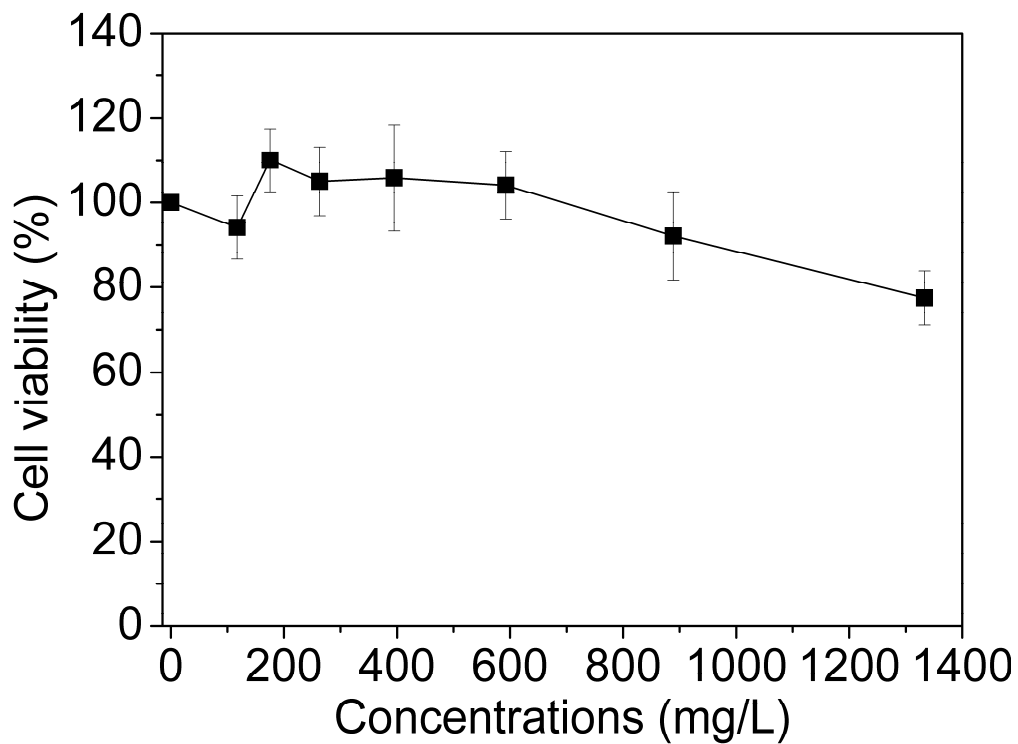


Figure S4: HepG2 cell viability as a function of the concentration of SMPMs.

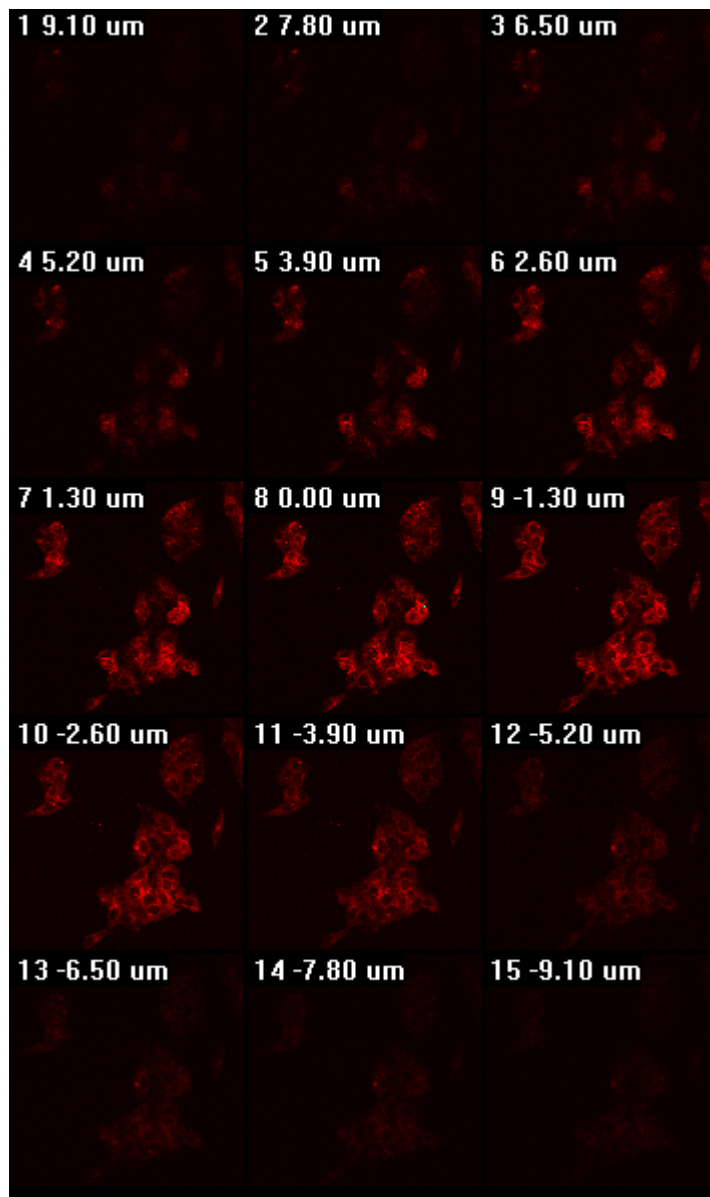


Figure S5. Typical Images of HepG2 cells cultured at 37 °C with SMPMs on z axis after excitation at 543 nm. (1-15: photos of cells obtained through laser line scanning)