

Guided Self-Assembly of Microgels: From Particle Arrays to Anisotropic Nanostructures

Stephanie Hiltl,[†] Marco-Philipp Schürings,[†] Andreea Balaceanu,[‡] Veronika
Mayorga,[‡] Clemens Liedel,[†] Andrij Pich,^{*,‡} and Alexander Böker^{*,†}

*Lehrstuhl für Makromolekulare Materialien und Oberflächen, RWTH Aachen University, Aachen,
and Functional and Interactive Polymers, DWI an der RWTH Aachen e.V., Aachen*

E-mail: pich@dwI.rwth-aachen.de; boeker@dwI.rwth-aachen.de

Electronic Supporting Information

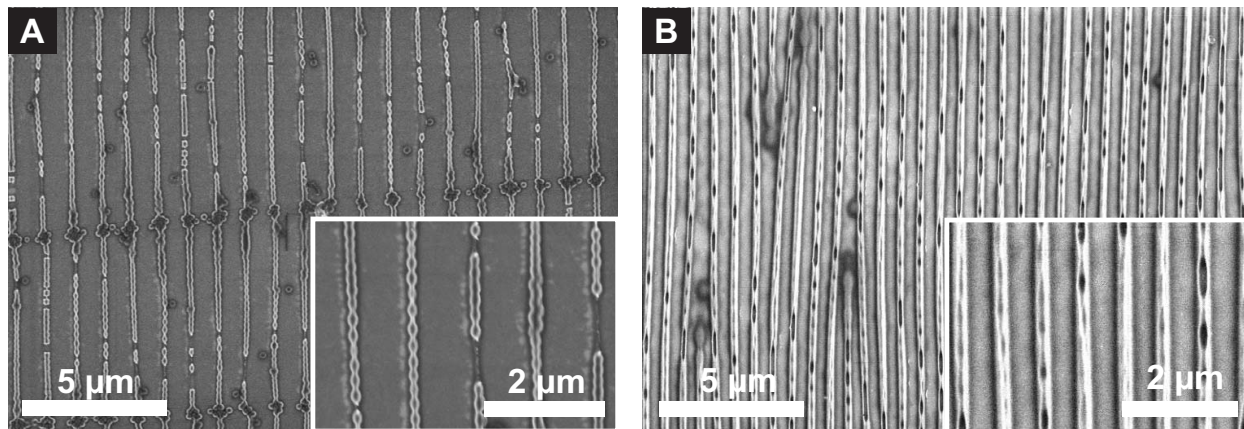


Figure 1: Scanning electron microscopy images of VCL/AAEM (A) and NiPAAm/VCL (B) printed on silicon wafers using wrinkles with $\lambda=850$ and $\lambda=750$ nm, respectively. Data corresponds to Figure 4.

*To whom correspondence should be addressed

[†]RWTH Aachen University

[‡]DWI