

Phase behavior of binary mixtures of block copolymers and a non-solvent in miniemulsion droplets as single and double nanoconfinement

Roland H. Staff,^a Patrick Rupper,^b Ingo Lieberwirth,^a Katharina Landfester,^a Daniel Crespy^{a*}

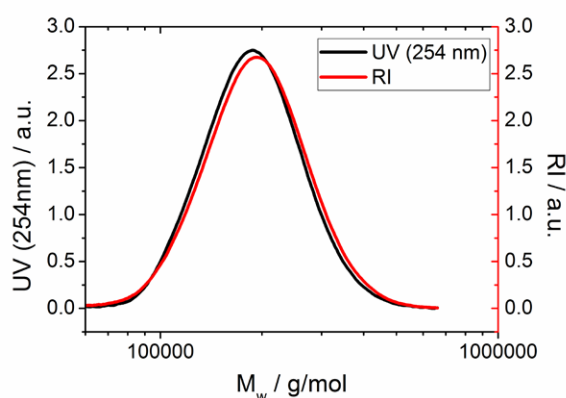


Figure 1: GPC-data for P(S₈₃₈-*b*-MMA₉₄₅).

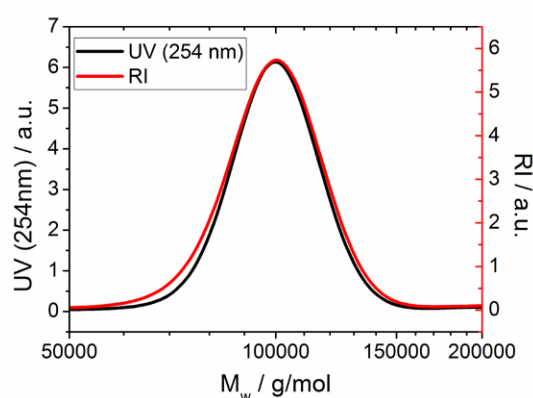


Figure 2: GPC-data for the PS-prepolymer of P(S₈₃₈-*b*-MMA₉₄₅).

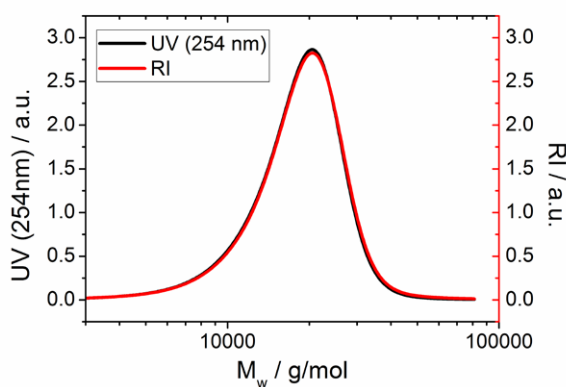


Figure 3: GPC-data for P(S₇₆-*b*-MMA₇₉).

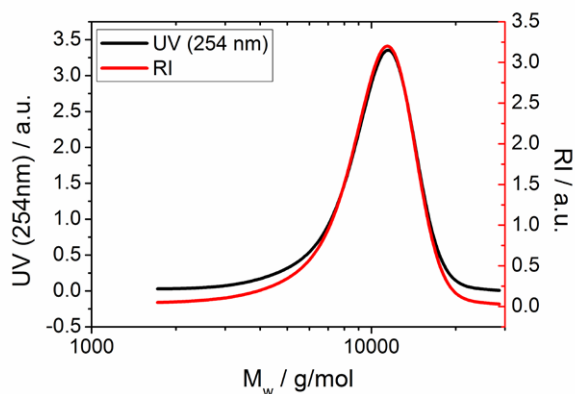


Figure 4: GPC-data for the PS-prepolymer of P(S₇₆-*b*-MMA₇₉).

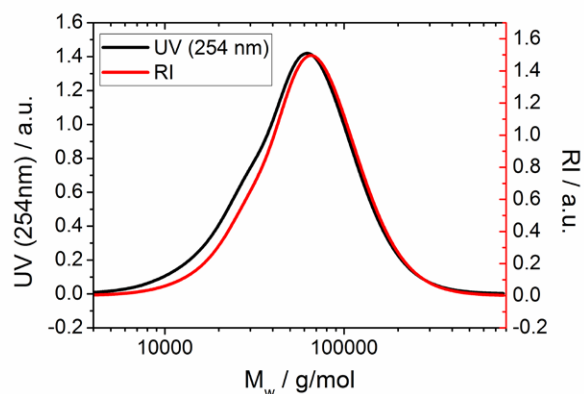


Figure 5: GPC-data for P(S-co-MMA).

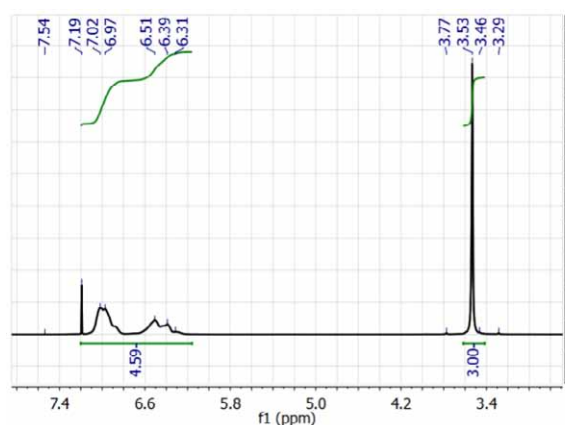


Figure 6: NMR-data for P(S₈₃₈-b-MMA₉₄₅).

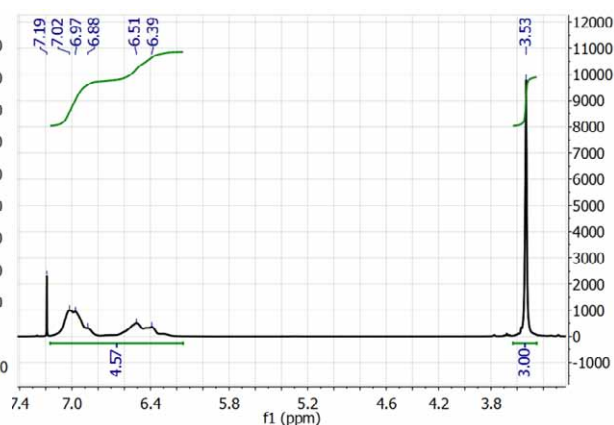


Figure 7: NMR-data for P(S₇₆-b-MMA₇₉).

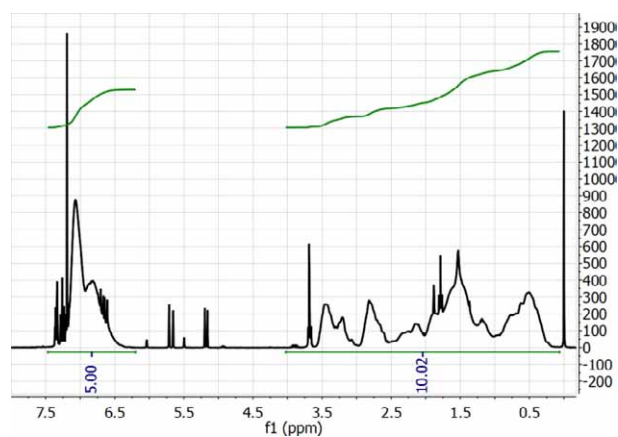


Figure 8: NMR-data for P(S-co-MMA).

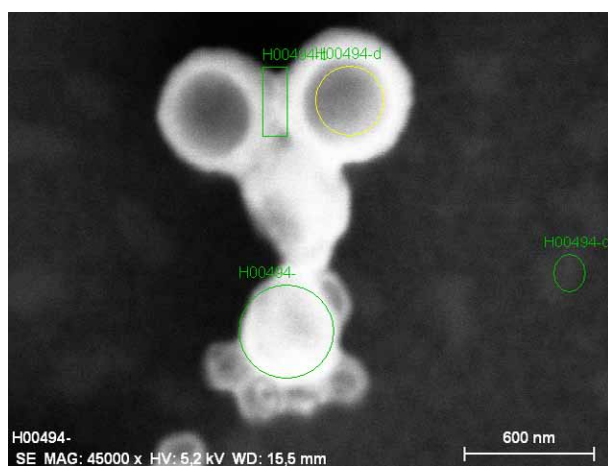


Figure 9: SEM-EDX-image of RS153.

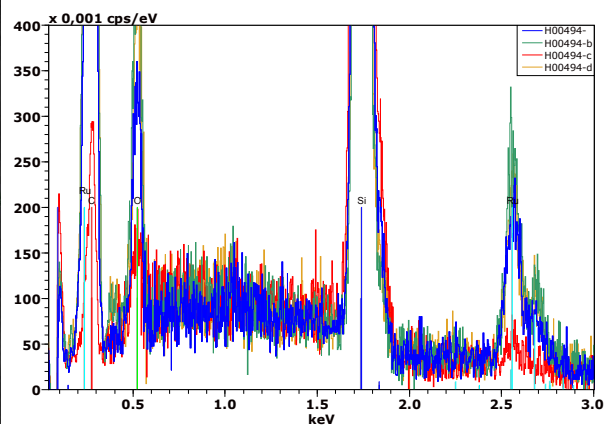


Figure 10: SEM-EDX-data for RS153.