

Electronic Supplementary Information

Self-Organization of Amide Dendrons with Focal Dipeptide Units

Jeonghun Lee,^a Joung Min Kim,^b Mikiyoung Yun,^a Chiyoung Park,^a Junwon Park,^b Keun Hyeung Lee,^{,b}
Chulhee Kim^{*,a}*

^aDepartment of Polymer Science and Engineering, Inha University, Incheon 402-751, Korea

^bDepartment of Chemistry, Inha University, Incheon 402-751, Korea

***To whom correspondence should be addressed, E-mail: leekh@inha.ac.kr, chk@inha.ac.kr**

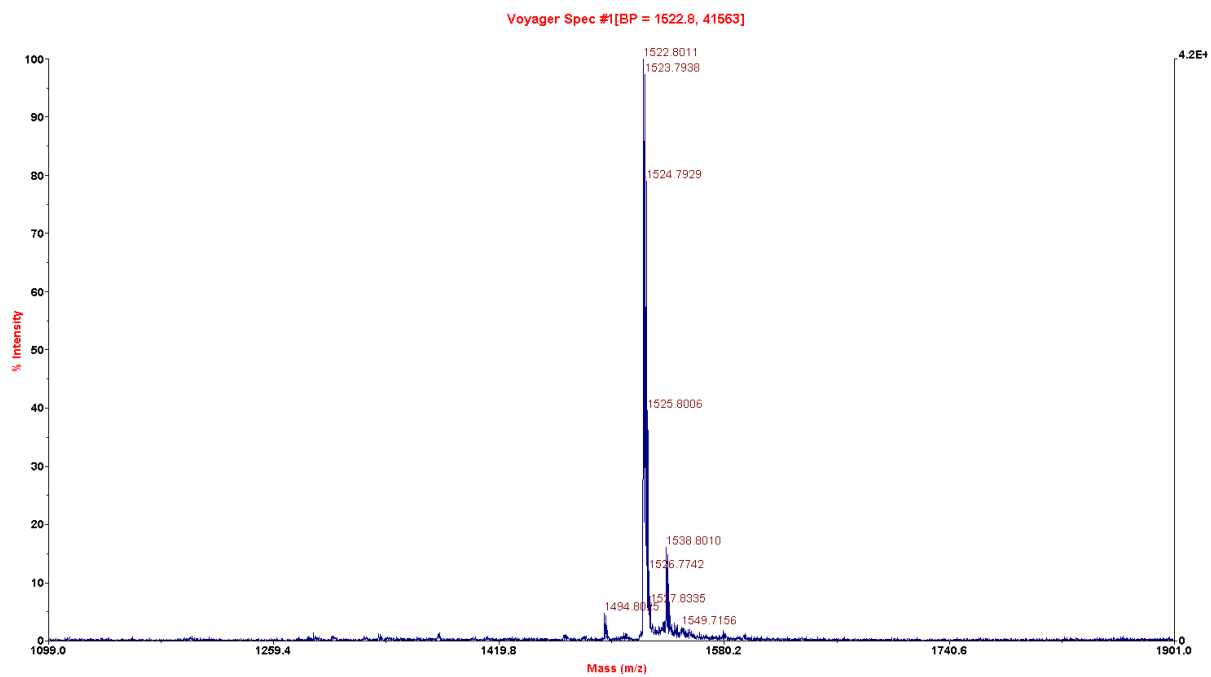


Figure S1. MALDI-TOF mass spectrum of **2G-GlyGly**. $[M+Na]^+$ calcd 1522.17, obsd 1522.80

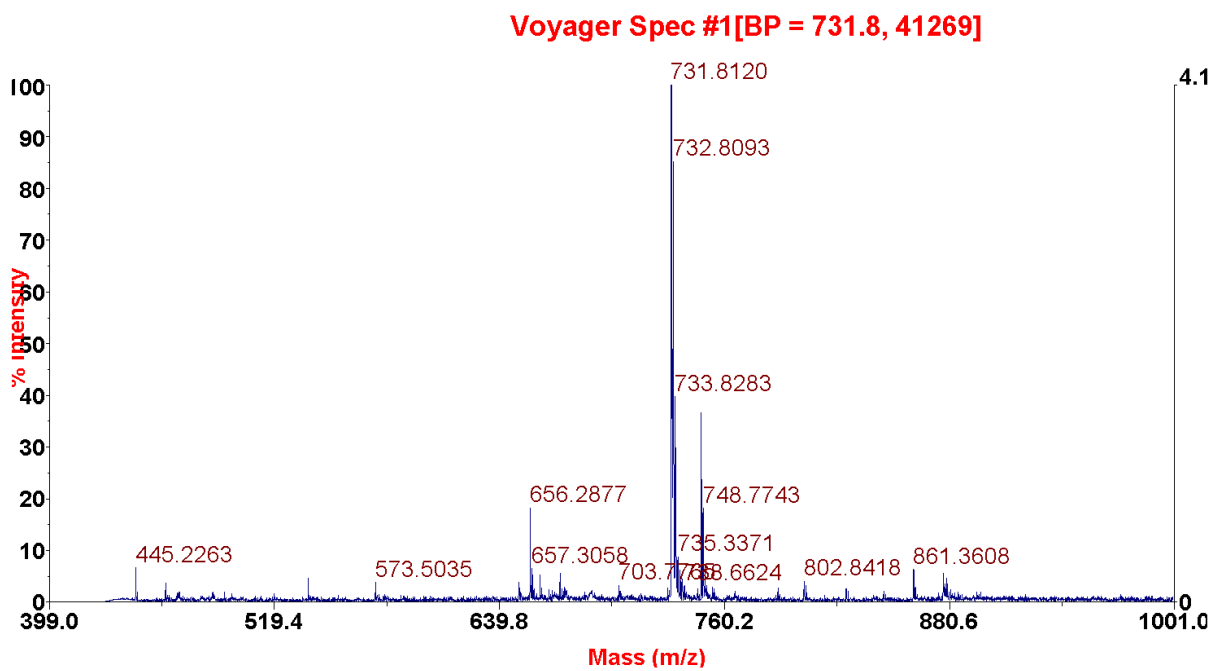


Figure S2. MALDI-TOF mass spectrum of **1G-GlyGly**. $[M+Na]^+$ calcd 731.54, obsd 731.81

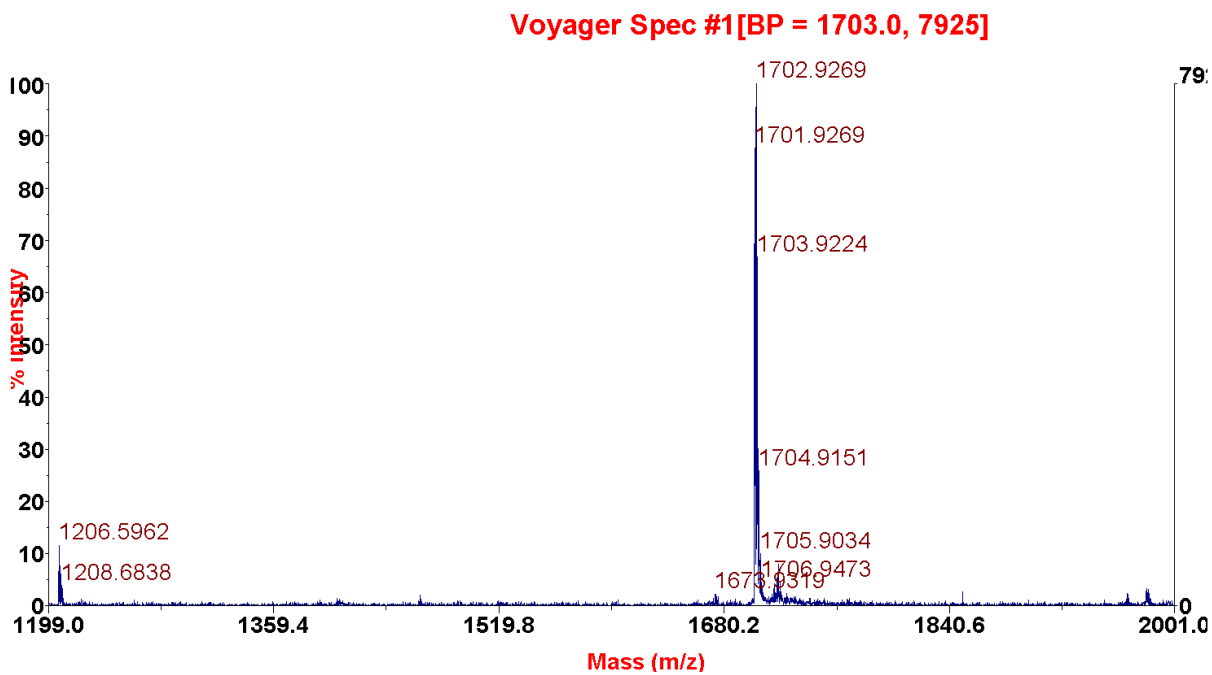


Figure S3. MALDI-TOF mass spectrum of **2G-PhePhe**. $[M+Na]^+$ calcd 1703.27, obsd 1701.92

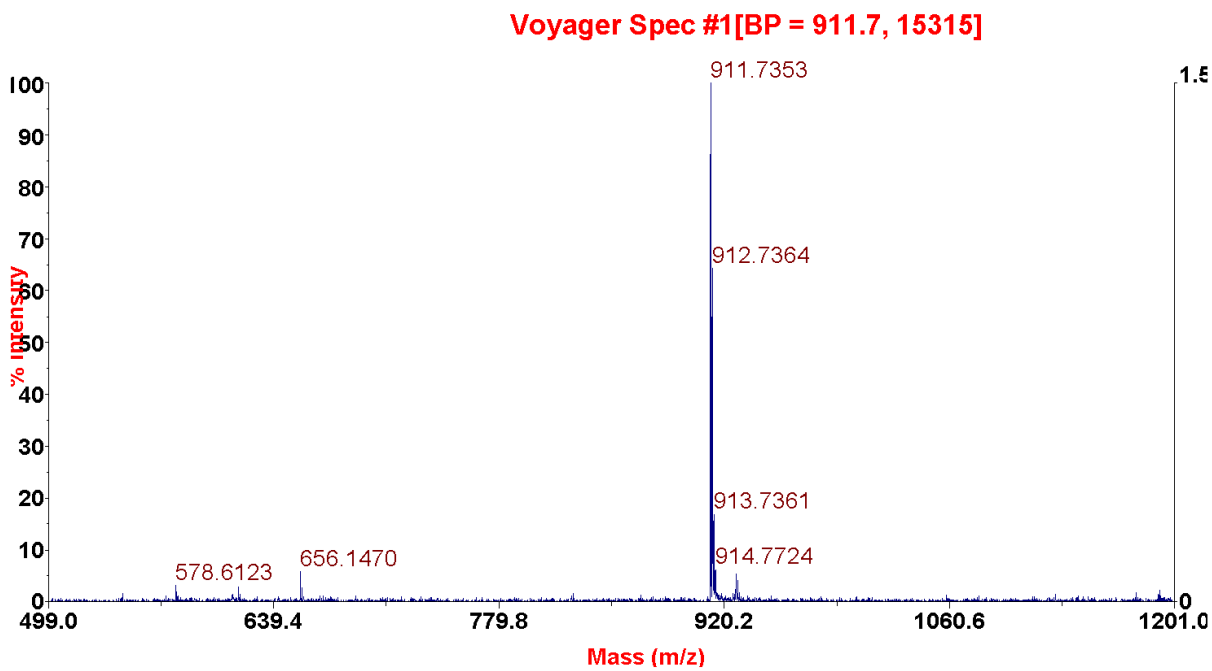


Figure S4. MALDI-TOF mass spectrum of **1G-PhePhe**. $[M+Na]^+$ calcd 911.64, obsd 911.73

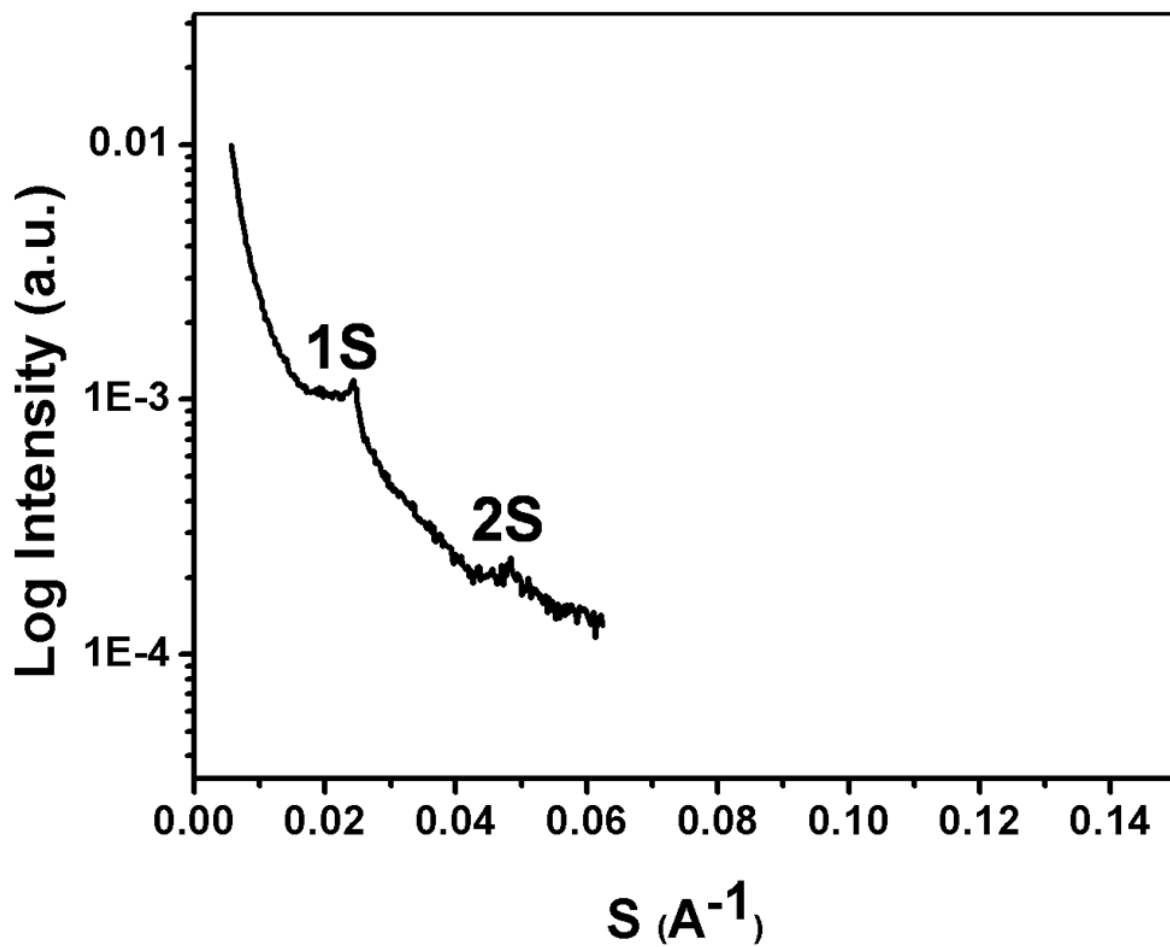


Figure S5. SAXS spectrum of **2G-PhePhe** in HFIP/water ($s=0.0242$, 41.3\AA), where $s(\text{\AA}^{-1}) = (\lambda/2\sin\theta)$.