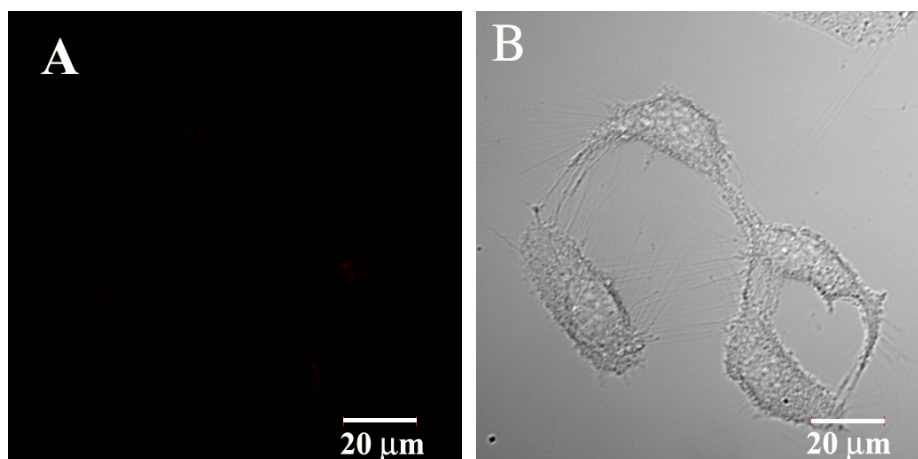


Supporting information

## **Cellular Entry Fashion of Hollow Milk Protein Spheres**

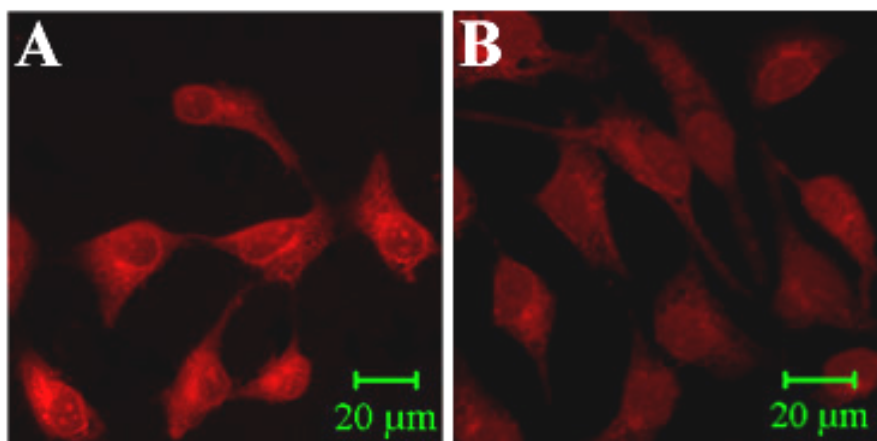
Chengjie Liu, Xue Zheng, Xin Wang, Wei Wu, Xiqun Jiang\*

*Laboratory of Mesoscopic Chemistry and Department of Polymer Science & Engineering,  
College of Chemistry & Chemical Engineering, Nanjing University, Nanjing, P. R. China.*

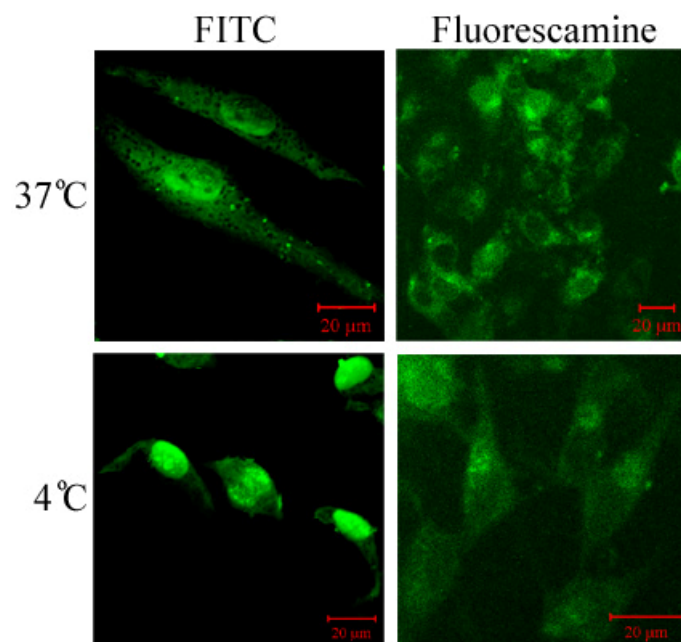


**Figure S1.** CLSM images of rhodamine-labeled alginic acid-poly(2-diethylamino)ethylmethacrylate nanospheres in HeLa after 3 h incubation at 4 °C. The images are of single section through the middle of cells. Alginic acid-poly(2-diethylamino)ethylmethacrylate nanospheres were prepared by the method that we reported in previous work<sup>RS1</sup>.

**RS1.** Guo, R.; Zhang, L.Y.; Jiang, Z. P.; Cao, Y.; Ding, Y.; Jiang, X. Q. *Biomacromolecules* **2007**, *8*, 843-850.



**Figure S2.** Live CLSM images of HeLa cells after 3 hours of incubation at 4 °C with rhodamine-labeled alpha (A) and beta (B) casein nanospheres. The cells were analyzed by CLSM without fixation. The images are of single sections through the middle of cells.



**Figure S3.** CLSM images of HeLa cells after 3 h incubation with FITC- or fluorescamine-labeled casein at 37 or 4 °C . The cells were analyzed by CLSM without fixation. The images are of single sections through the middle of cells.