

Figure S1: Adsorption of ssRNA_{10-polyA} and of dsDNA₂₀₀₀ to a mixed DOPC/DOTAP 30:70 bilayers for varying bulk concentration of RNA or DNA, presented as adsorbed amount per surface area, versus bulk concentration. T=25°C.

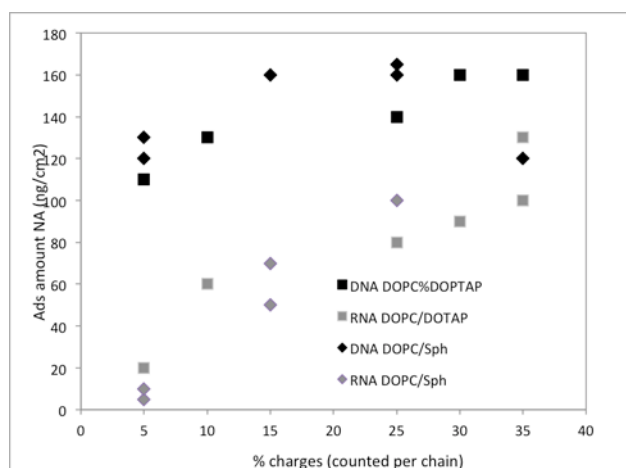


Figure S2: Adsorption of ssRNA_{10-polyA} and of dsDNA₂₀₀₀ to DOPC/DOTAP and DOPC/Sphingosine bilayers with varying amounts of charged lipids. Data are presented both as adsorbed amount per surface area. The percentage of charged chains refers to the number of head group charges averaged over the number of chains. T=25°C.

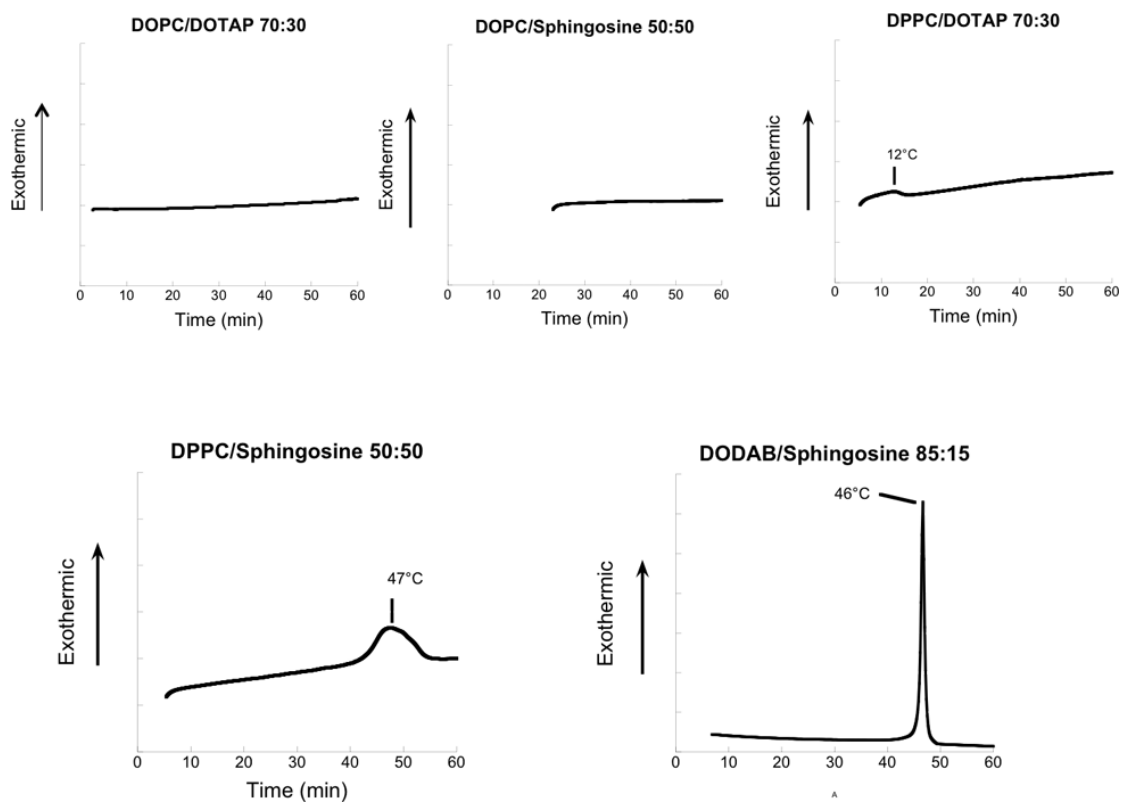


Figure S3: DSC traces for different lipid mixtures used. Compositions refer to molar ratios.