

Supplementary material for

Crack-free Controlled Wrinkling of a Bilayer Film with a Gradient Interface

Yan Xuan,^a Xu Guo,^a Yushuang Cui,^a Changsheng Yuan,^{*a} Haixiong Ge,^a Bo Cui,^b Yanfeng Chen^a

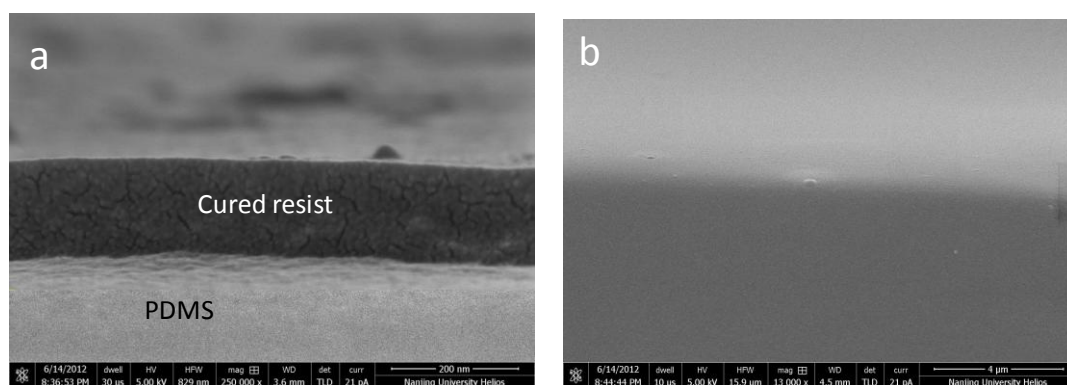


Figure S1. SEM images of the cross-section of the samples (a) without a gradient interface and (b) with a gradient interface.

Electronic Supplementary Material (ESI) for Soft Matter
This journal is © The Royal Society of Chemistry 2012

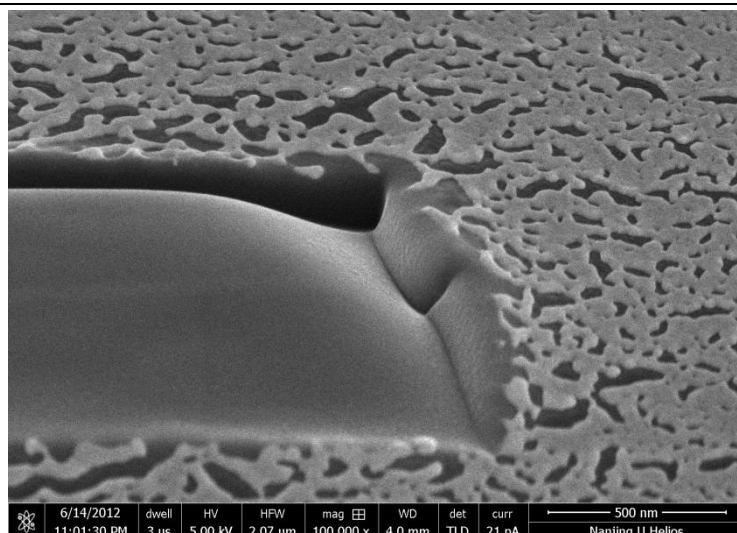


Figure S2. SEM image of the sample cut by FIB.