

## Electronic Supplementary Information

# Imprinted Polymer Beads Enabling Direct and Selective Molecular Separation in Water†

Xiantao Shen,<sup>‡</sup> Changgang Xu<sup>‡</sup> and Lei Ye\*

Division of Pure and Applied Biochemistry, Lund University, Box 124, 221 00 Lund, Sweden

Tel: +46 46 2229560; Fax: +46 46 2224611; Email: lei.ye@tbiokem.lth.se

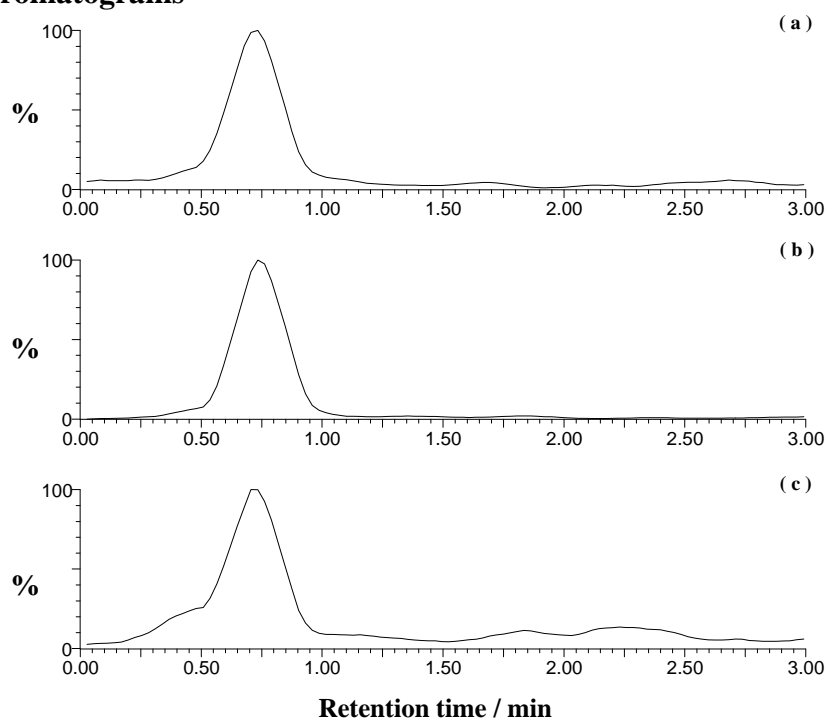
### 1. BET surface area

The BET surface area of the polymer particles are shown in Table S1.

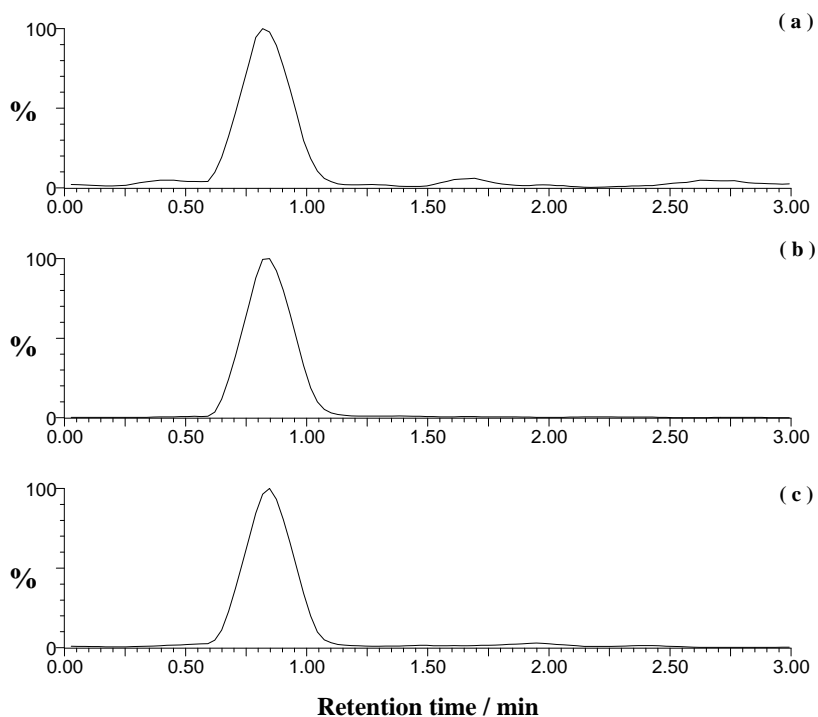
**Table S1** BET surface area of polymer particles.

Type of particles	Synthetic method	Volume of porogen used (μL)	BET surface area (m <sup>2</sup> g <sup>-1</sup> )	Average pore diameter (Å)
MIP-P2	Pickering emulsion	200	0.85	198.0
NIP-P2	Pickering emulsion	200	0.69	291.6
MIP-P4	Pickering emulsion	1000	198.3	92.4
MIP-B	Bulk	200	22.8	145.6
NIP-B	Bulk	200	15.9	147.8

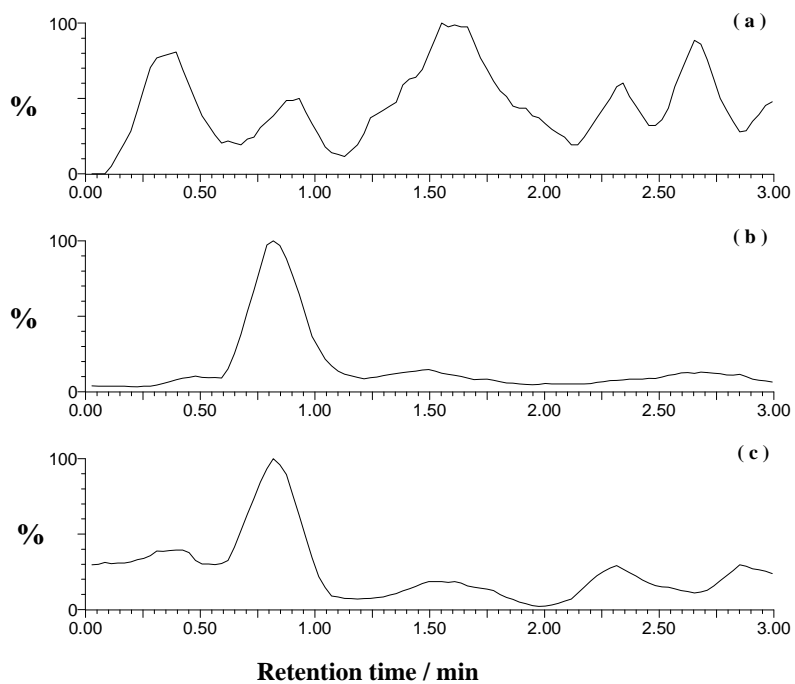
### 2. LC-MS/MS Chromatograms



**Fig. S1** HPLC-MS/MS chromatograms of pindolol obtained from spiked tap water before (a) and after SPE treatment with MIP-P2 (b) and with NIP-P2 (c).



**Fig. S2** HPLC-MS/MS chromatograms of metoprolol obtained from spiked tap water before (a) and after SPE treatment with MIP-P2 (b) and with NIP-P2 (c).



**Fig. S3** HPLC-MS/MS chromatograms of timolol obtained from spiked tap water before (a) and after SPE treatment with MIP-P2 (b) and with NIP-P2 (c).