

Exploiting Additive and Subtractive Patterning for Spatially Controlled and Robust Bacterial Co-Cultures

Cait M. Costello,[†] Jan-Ulrich Kreft,[§] Christopher M. Thomas,[§] Daniel M. Hammes,[§] Peng Bao,[‡] Stephen D. Evans,[‡] Paula M. Mendes^{†,*}

[†]*School of Chemical Engineering and* [§]*School of Biosciences, University of Birmingham, Edgbaston, Birmingham, B15 2TT, UK.*

[‡]*School of Physics and Astronomy, University of Leeds, Woodhouse Lane, Leeds, LS2 9JT, UK.*

To whom correspondence may be addressed. E-mail: p.m.mendes@bham.ac.uk

SUPPORTING INFORMATION

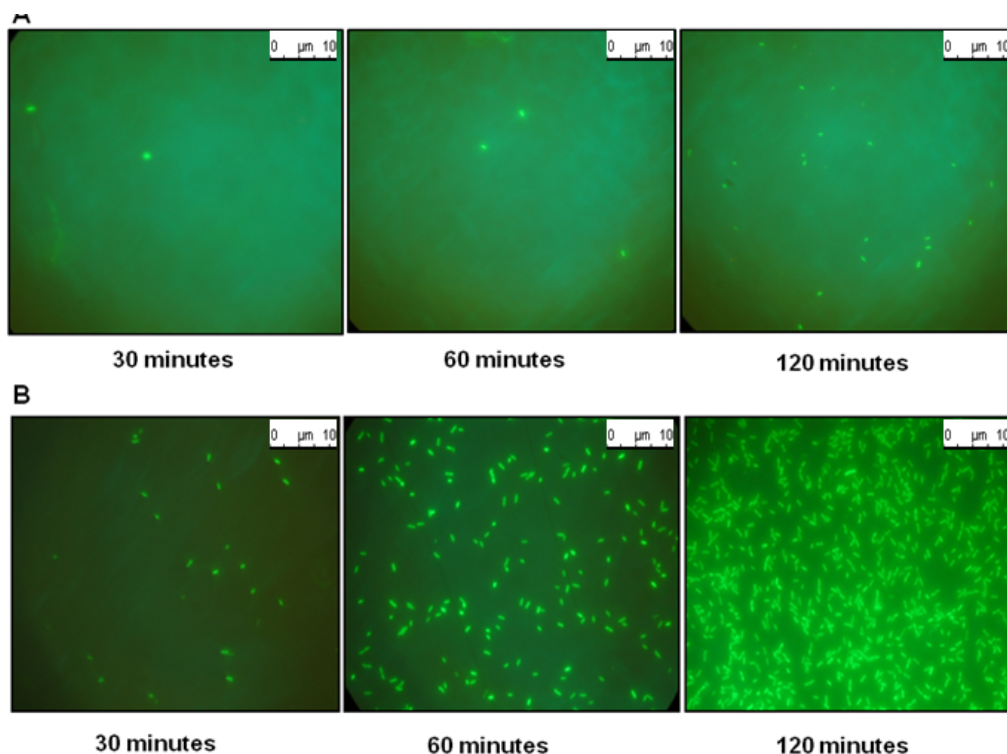


Fig S1: Fluorescence microscope images of bacterial adhesion to COOH-SAMs (A) and MT SAMs (B) over time.