

## Supplementary Information

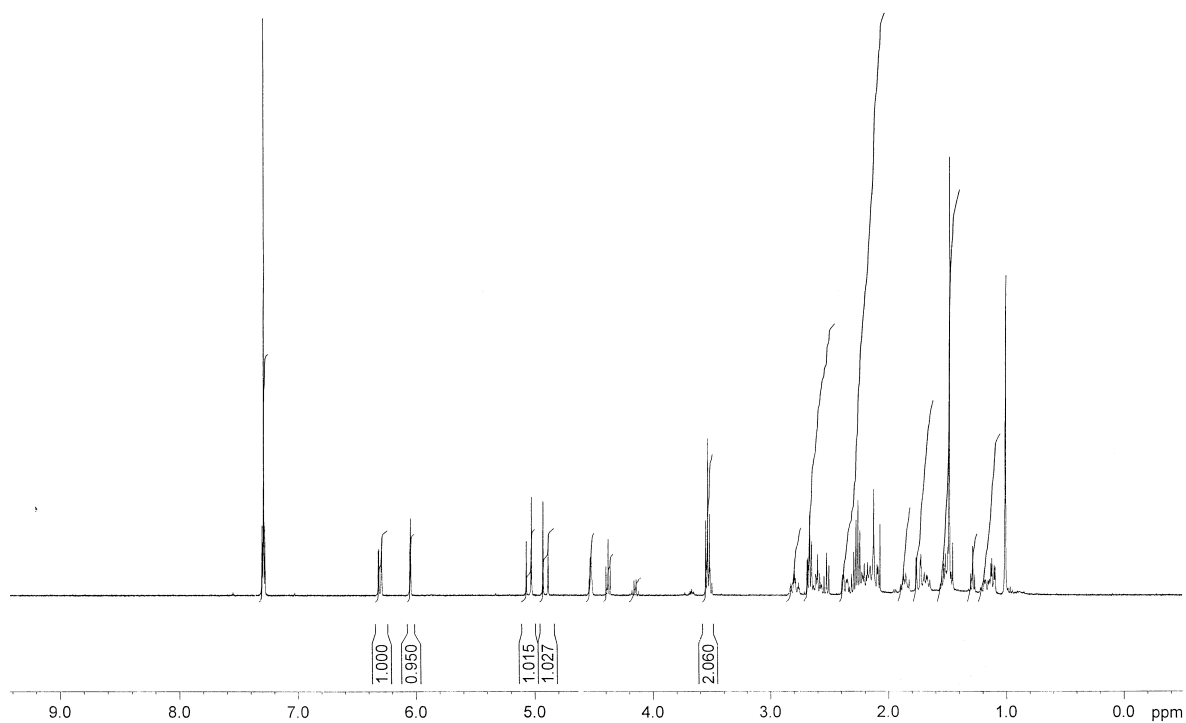


Figure S1

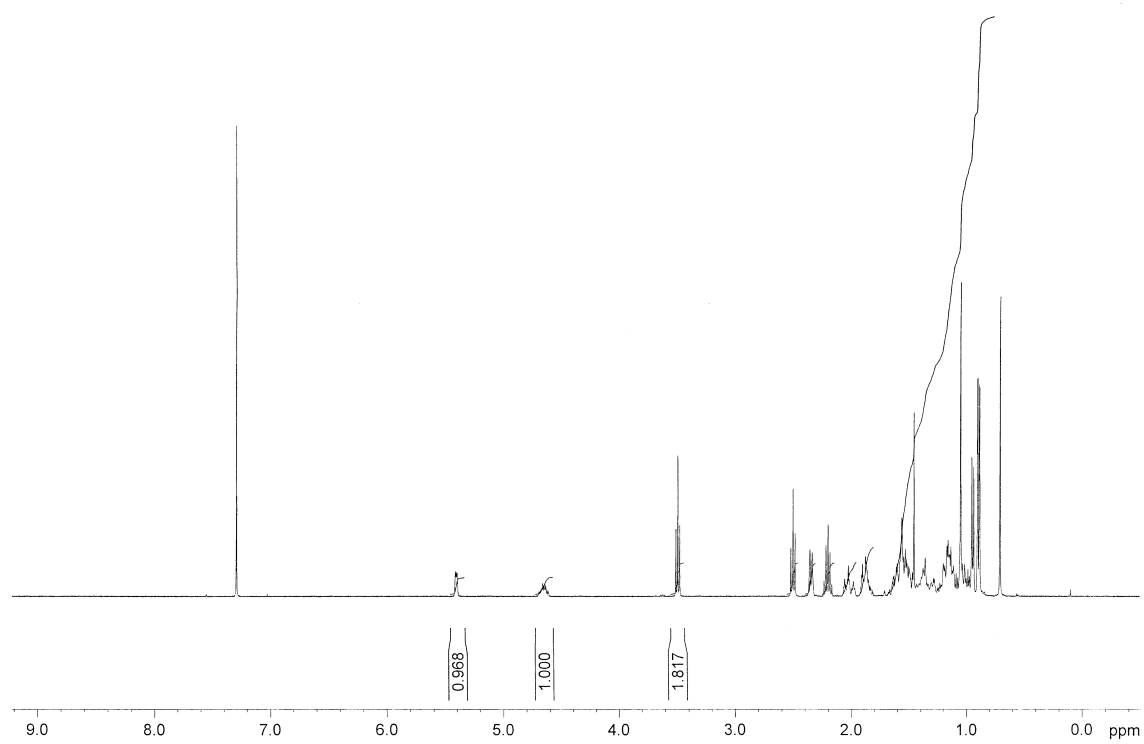


Figure S2

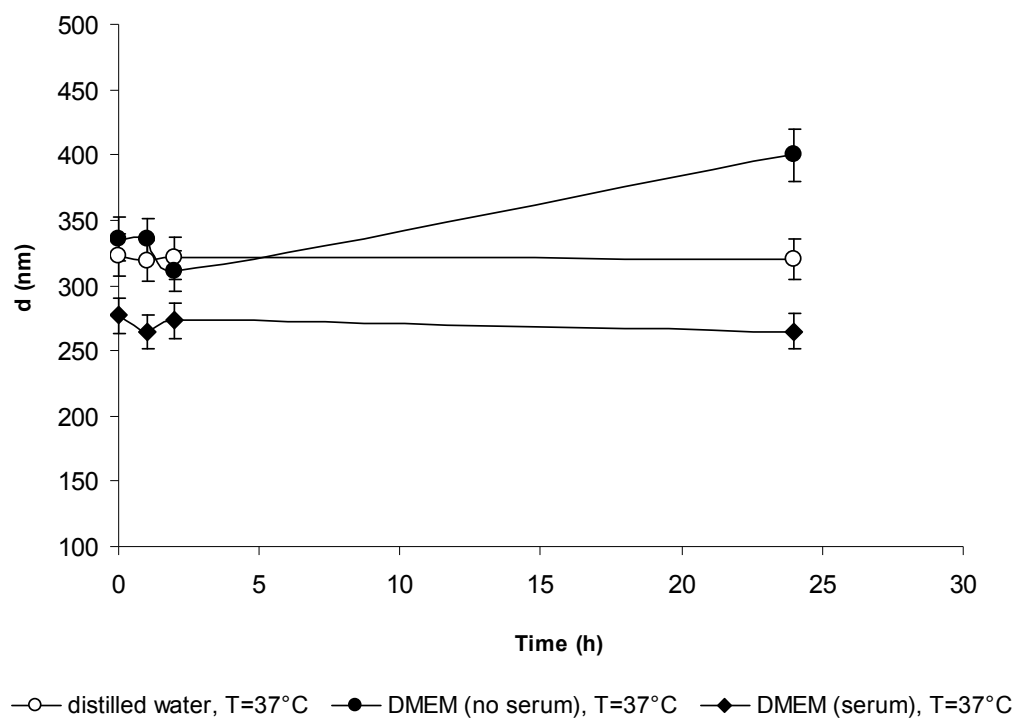


Figure S3

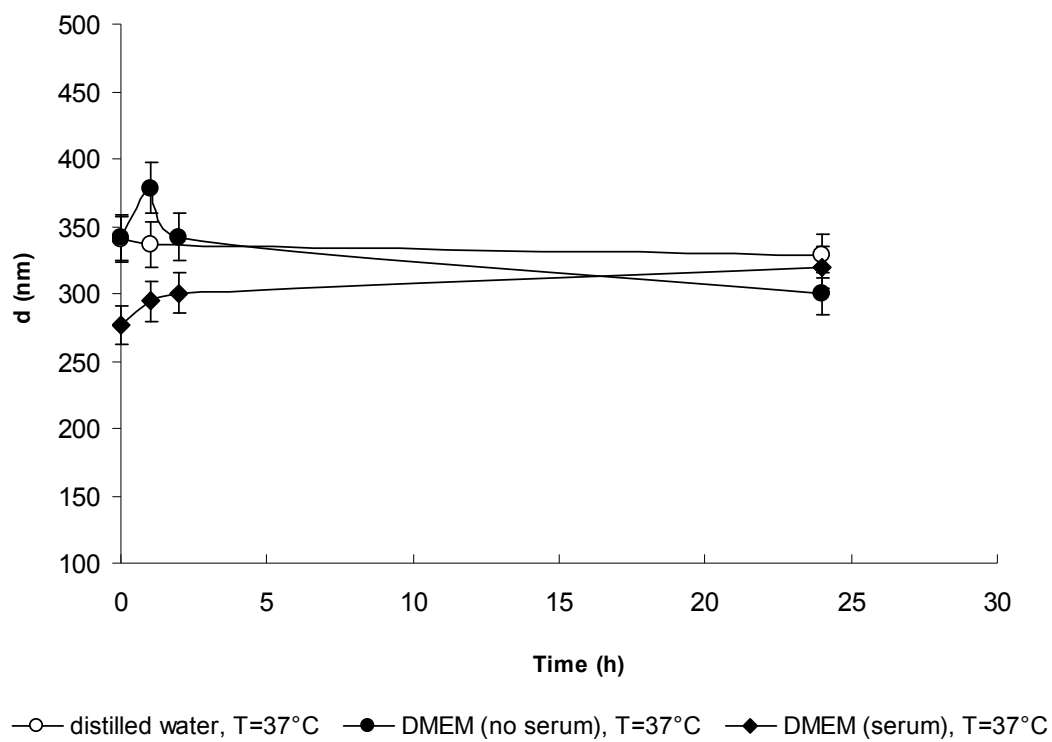


Figure S4

Table S1

	<b><sup>1</sup>H (ppm)</b>	<b><sup>13</sup>C (ppm)</b>
<b>G'1</b>	4.577	104.89
<b>G'2</b>	3.404	76.60
<b>G'3</b>	3.589	84.57
<b>G'4</b>	3.462	70.50
<b>G'5</b>	3.462	78.63
<b>G'6</b>	3.912	63.22
<b>G'6'</b>	3.716	63.22
<b>GA1</b>	4.539	104.89
<b>GA2</b>	3.399	75.35
<b>GA3</b>	3.648	76.91
<b>GA4</b>	3.736	83.00
<b>GA5</b>	3.883	78.01
<b>G''1</b>	4.734	105.68
<b>G''2</b>	3.325	76.29
<b>G''3</b>	3.707	76.92
<b>G''4</b>	3.619	81.45
<b>G''5</b>	3.589	77.39
<b>G''6</b>	3.951	62.61
<b>G''6'</b>	3.804	62.61
<b>R1</b>	5.125	103.34
<b>R2</b>	4.050	73.02
<b>R3</b>	4.000	72.85
<b>R4</b>	3.677	83.80
<b>R5</b>	4.050	73.02
<b>R6</b>	1.301	19.39

Fig. S1:  $^1\text{H}$ -NMR spectrum of Br-Pred.

Fig. S2:  $^1\text{H}$ -NMR spectrum of Br-CH derivative.

Fig. S3: Stability profile of Ge-Pred NHs in DMEM and in DMEM added with 10% of FBS.

Fig. S4: Stability profile of Ge-CH NHs in DMEM and in DMEM added with 10% of FBS.

Table S1: Assignment of gellan protonic resonances achieved at room temperature.