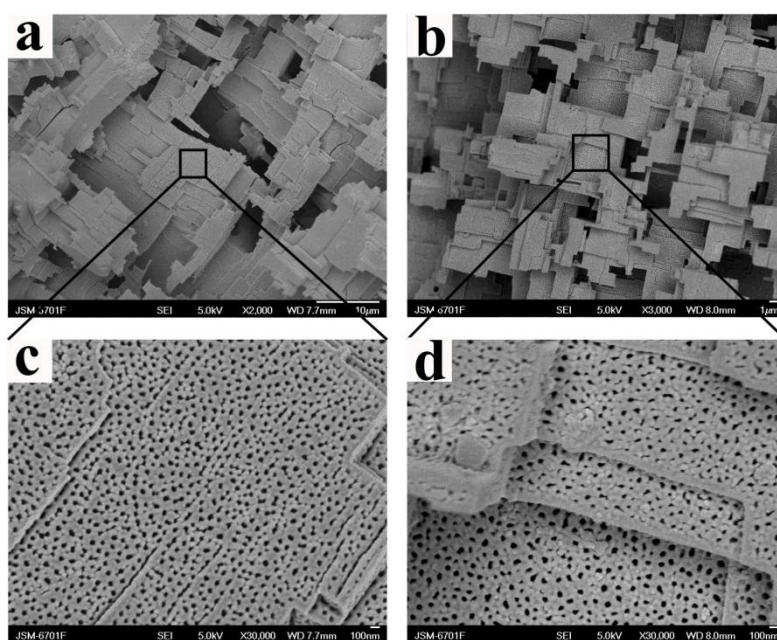


In-situ surface reaction induced adhesion force change for mobility control, droplets sorting and bio-detection

Xinjie Liu^{1,2}, Zhilu Liu¹, Yongmin Liang¹, Feng Zhou^{1*}



Supplementary Figure S1. Digital images of in-situ hot effects induced reversible adhesion by directly heating.



Supplementary Figure S2. FE-SEM images of (a) mixed silane modified anodized alumina (APTS/PFTEOS=4:4) and (c) the corresponding biotin grafted anodized alumina (from APTS/PFTEOS=4:4); (c) and (d) are the respective magnified images.