

ELECTRONIC SUPPLEMENTARY INFORMATION

Controlling Uni-directional Wetting via Surface Chemistry and Morphology

Levent Kubus^{1,2}, Hakan Erdogan¹, Erhan Piskin^{2,3}, Gokhan Demirel^{1,3*}

¹*Bio-inspired Materials Research Laboratory (BIMREL), Department of Chemistry, Gazi University, 06500, Ankara, TURKEY*

²*Department of Chemical Engineering, Hacettepe University, 06532 Ankara, Turkey*

³*Biyomedtek: Center for Bioengineering, 06532, Ankara, TURKEY*

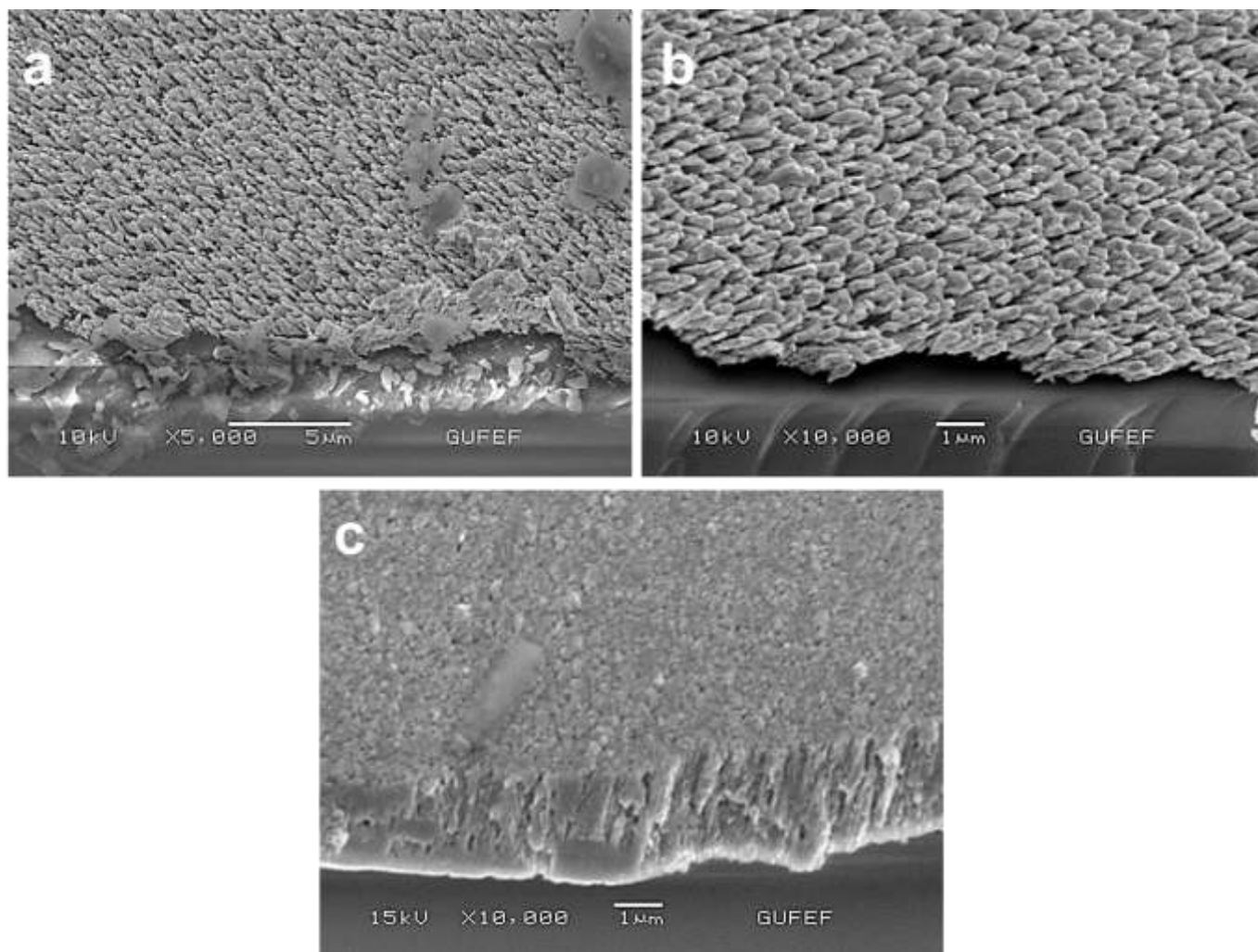


Figure S1. The cross-section SEM images of gold nanofilms (a) for $\alpha=5^\circ$, (b) for $\alpha=10^\circ$, and (c) for $\alpha=20^\circ$, respectively.

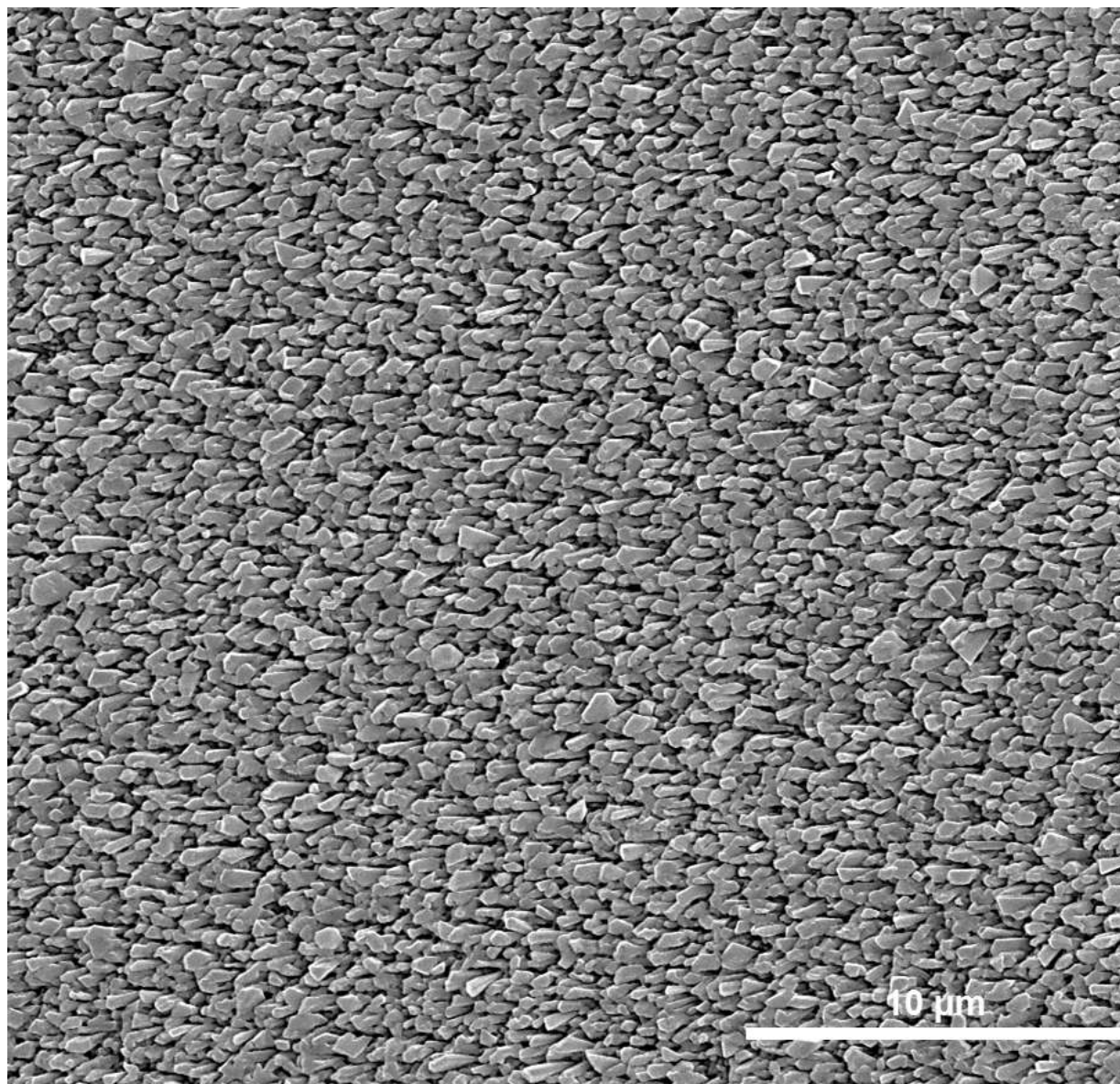


Figure S2. Top-view SEM image of fabricated gold nanofilm at $\alpha=5^\circ$.

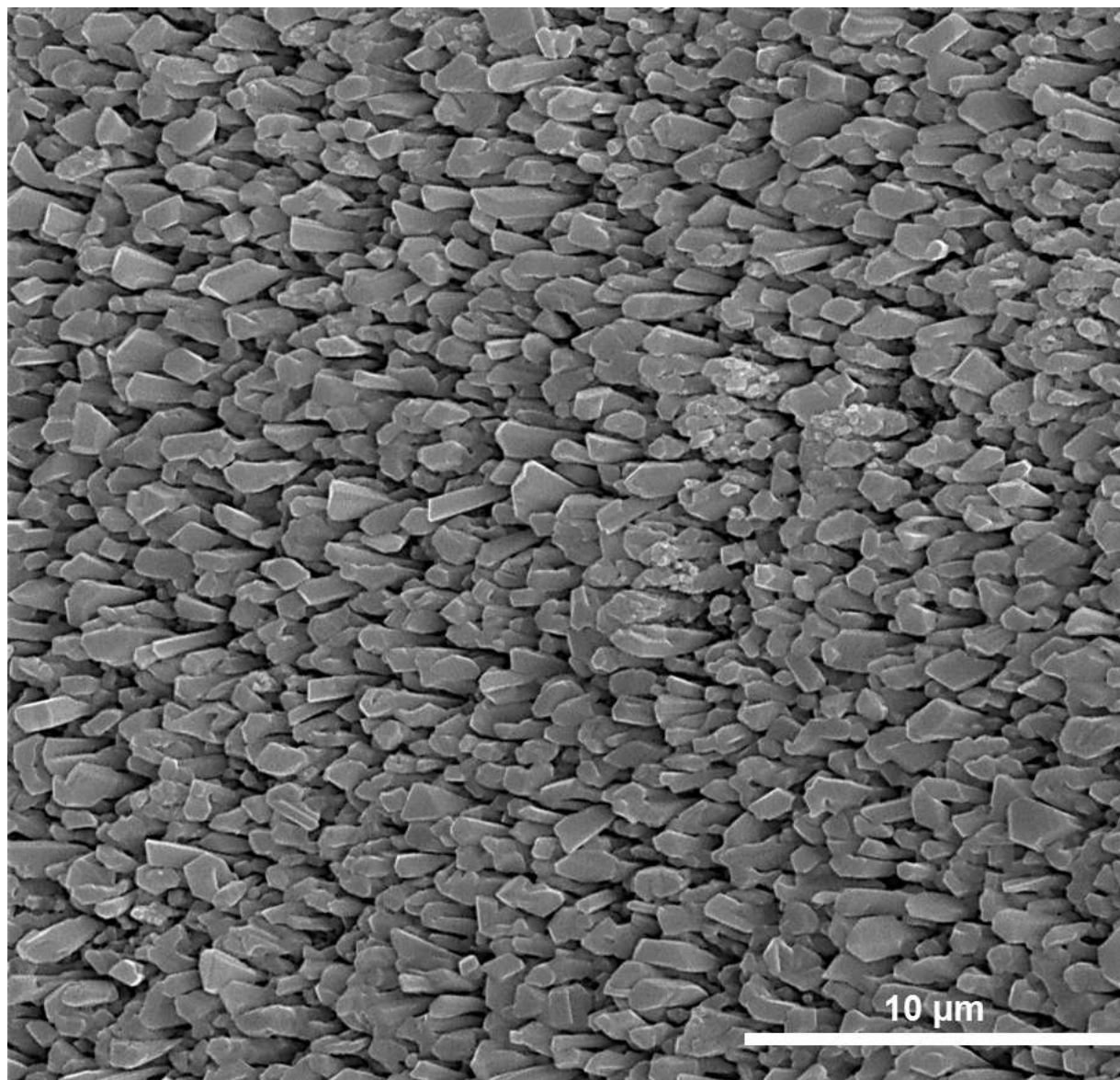


Figure S3. Top-view SEM image of fabricated gold nanofilm at $\alpha=10^\circ$.

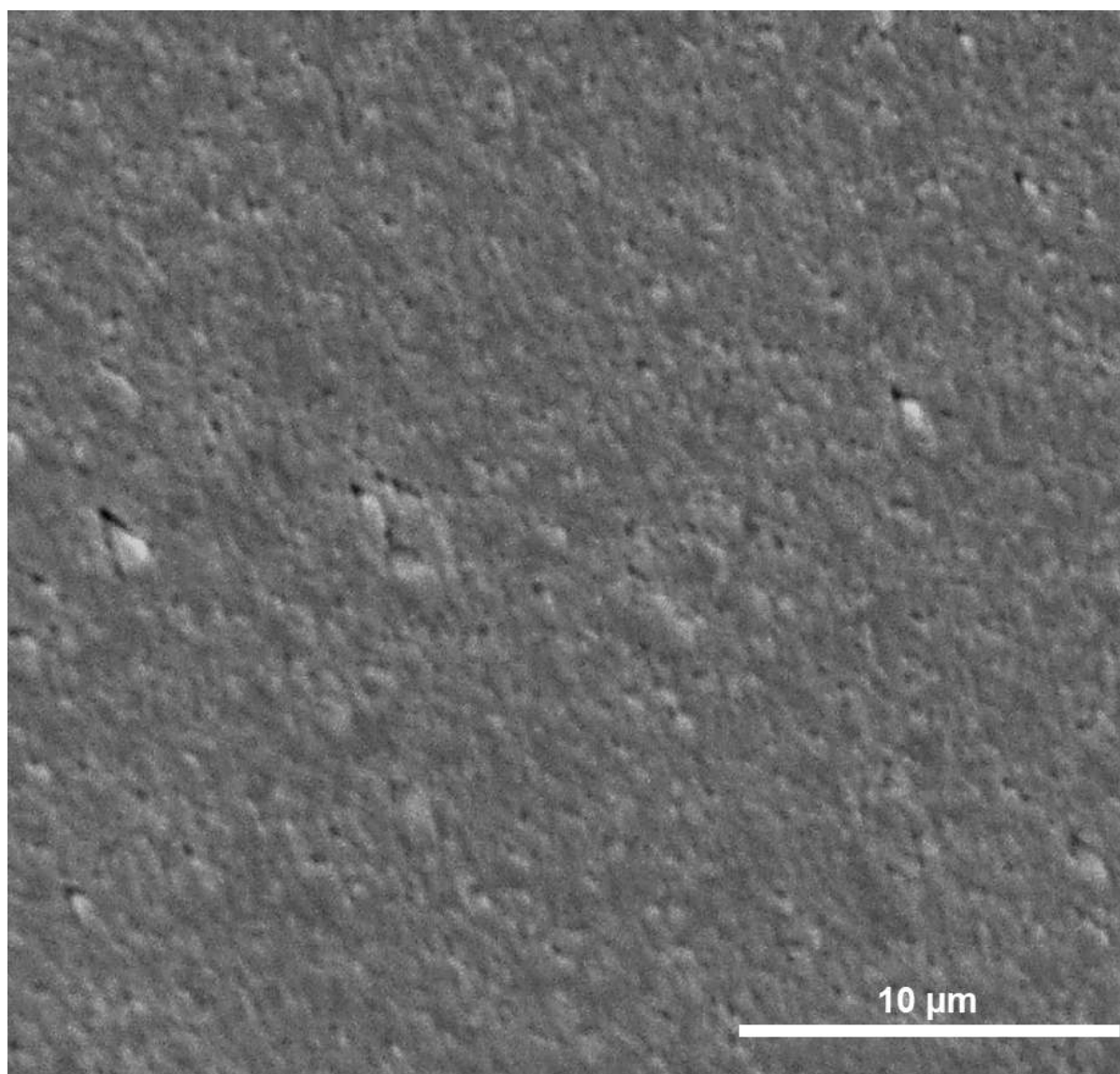


Figure S4. Top-view SEM image of fabricated gold nanofilm at $\alpha=20^\circ$.

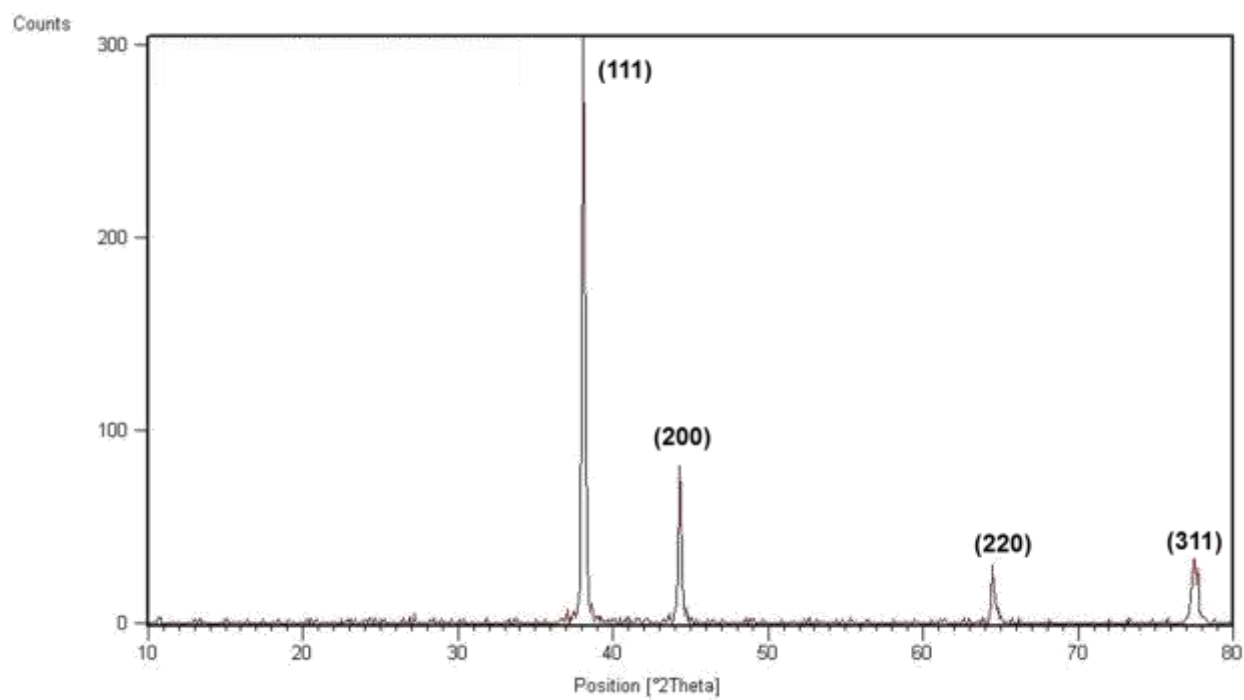


Figure S5. XRD pattern of fabricated directional gold nanofilm.

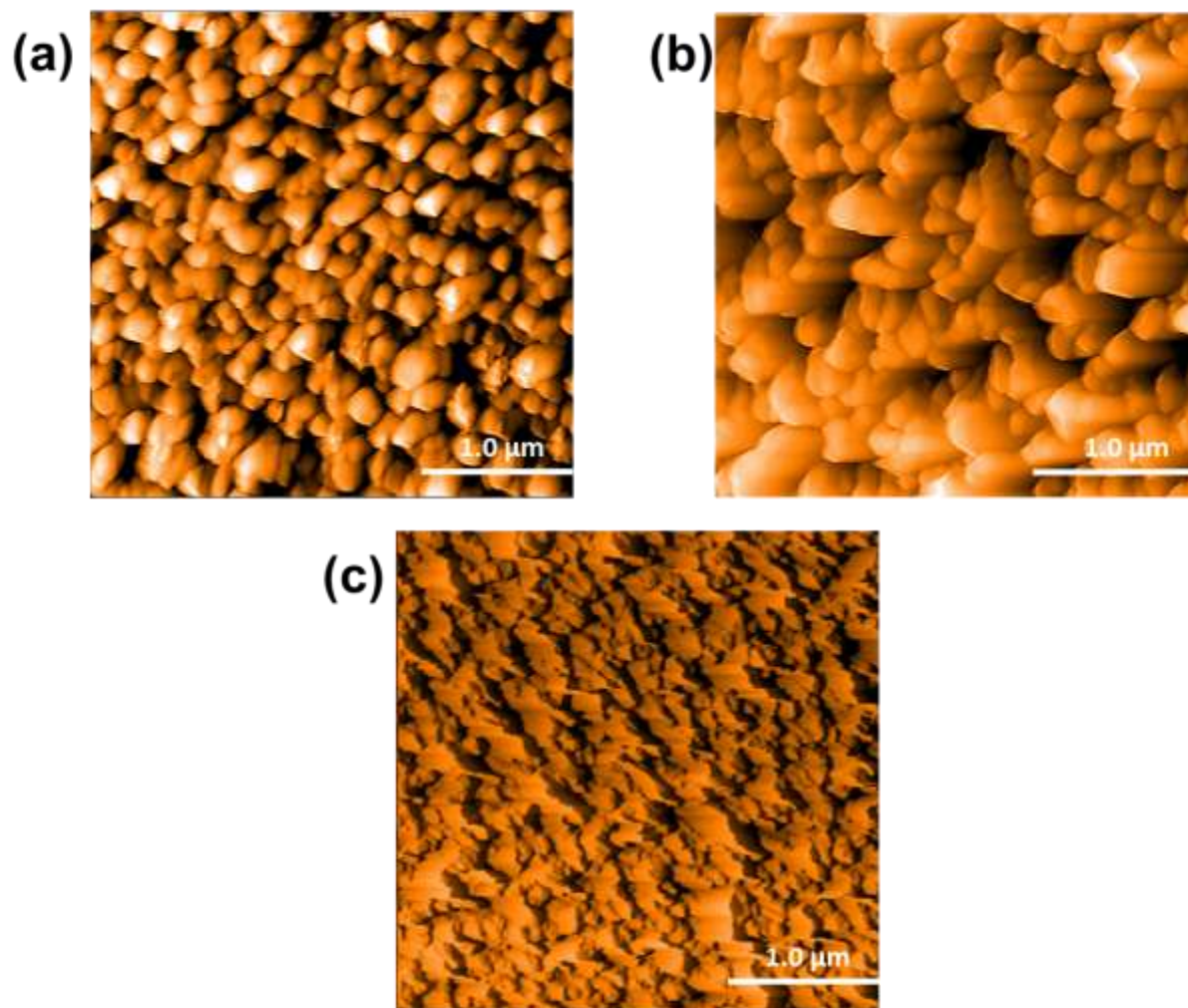


Figure S6. AFM images of fabricated gold nanofilms at (a) $\alpha=5^\circ$, (b) $\alpha=10^\circ$, and (c) $\alpha=20^\circ$.

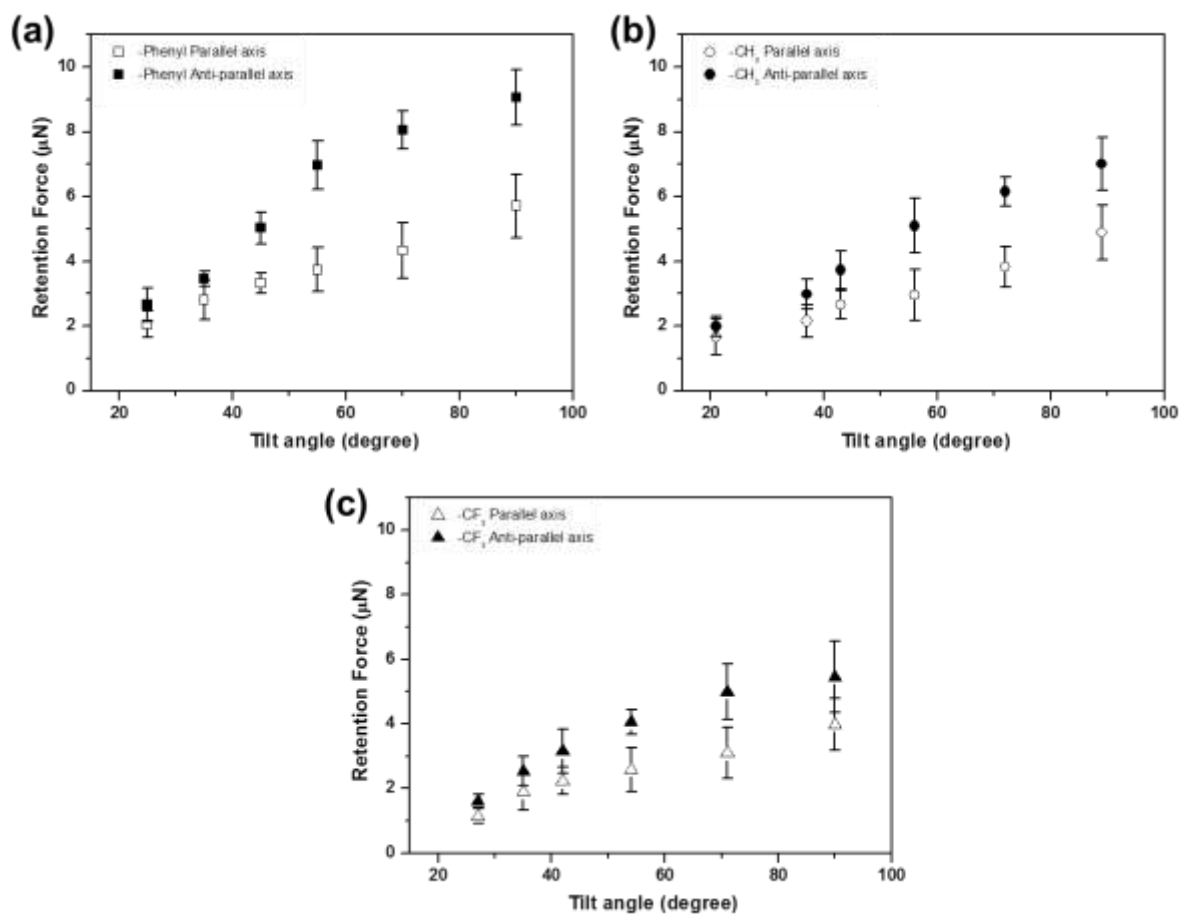


Figure S7. Retention Forces of modified AuNRs as a function of the substrate tilt angles.