

Figure 1 SEM images of silicone surfaces presenting conical features of 20 μm with separation distance of 4 μm (a), 8 μm (b) and 13 μm (c)

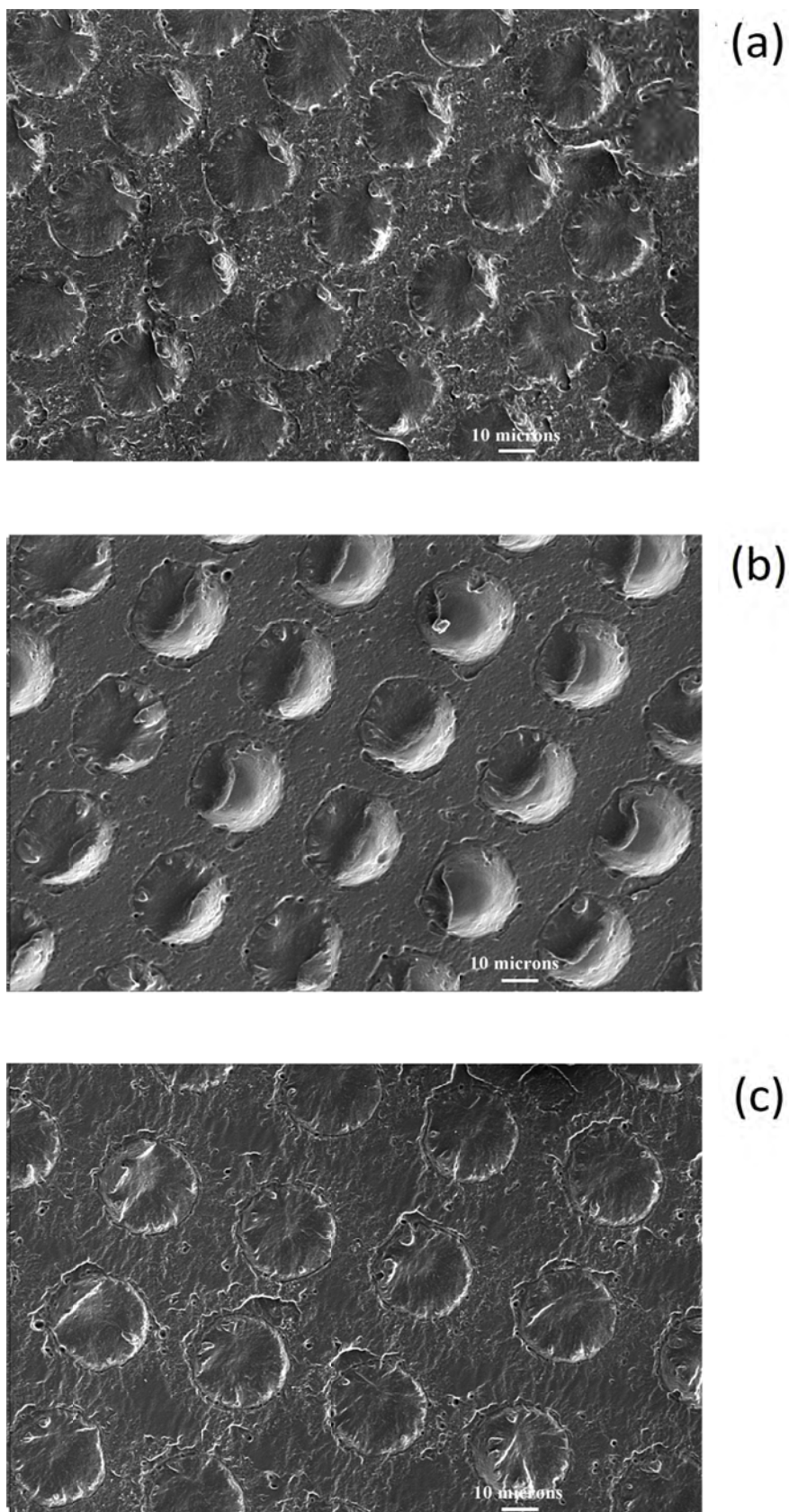


Figure 2 SEM images of silicone surfaces presenting conical features of 25 μm with separation distance of 4 μm (a), 8 μm (b) and 13 μm (c)

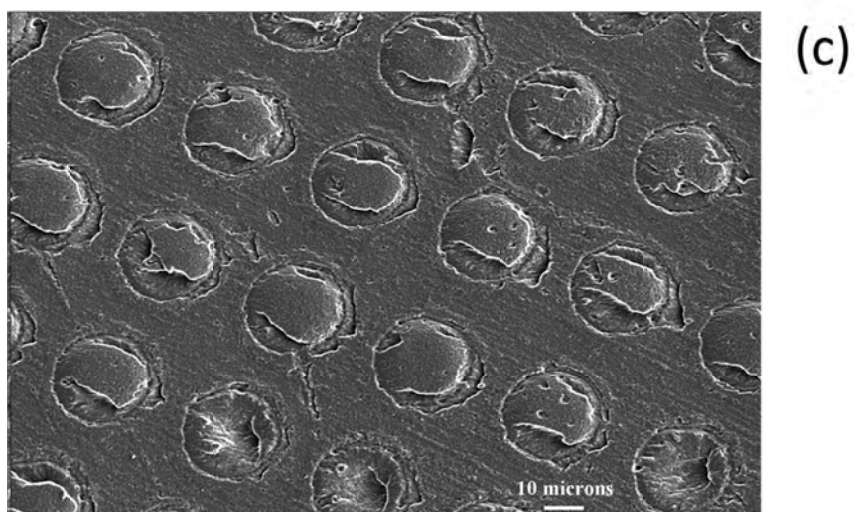
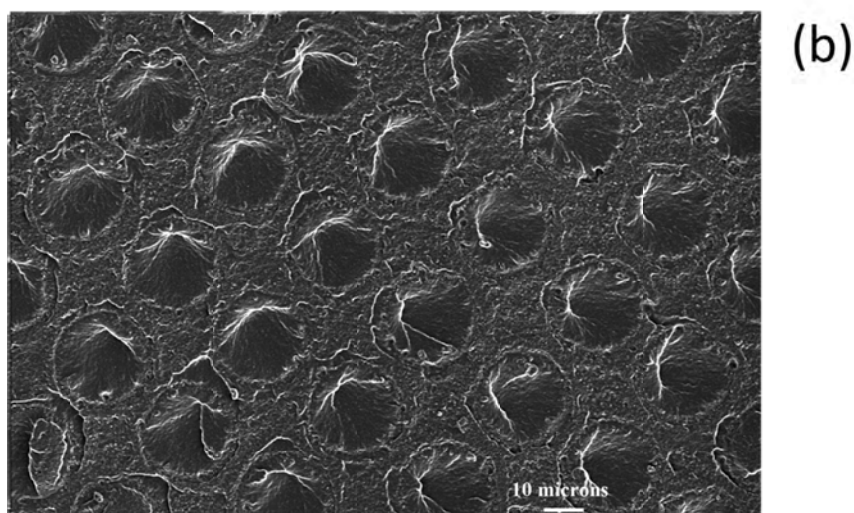
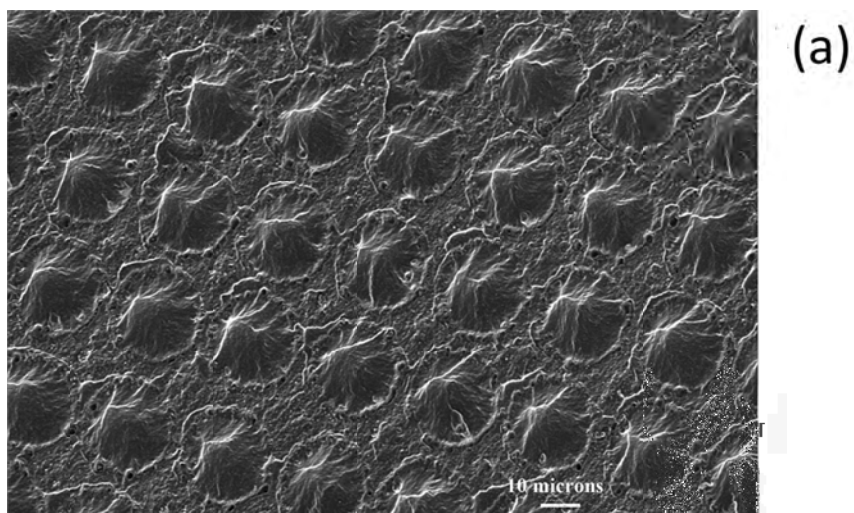


Figure 3 SEM images of silicone surfaces presenting conical features of $30\ \mu\text{m}$ with separation distance of $4\ \mu\text{m}$ (a), $8\ \mu\text{m}$ (b) and $13\ \mu\text{m}$ (c)

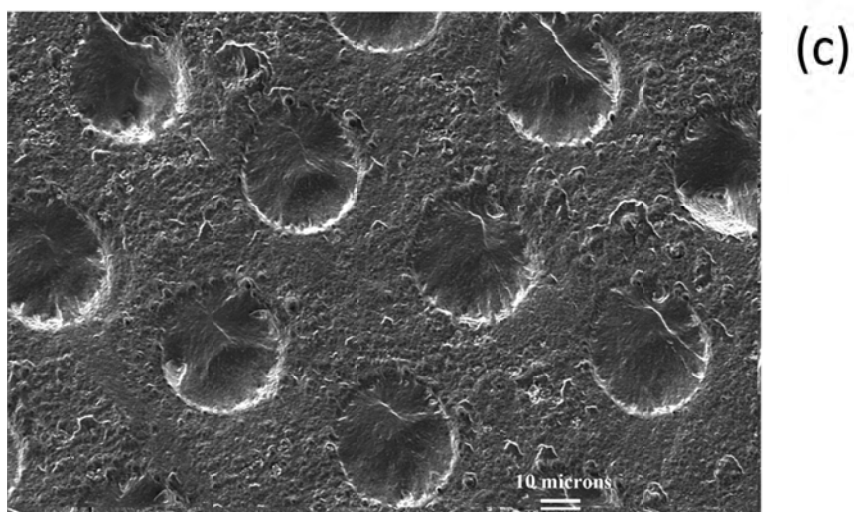
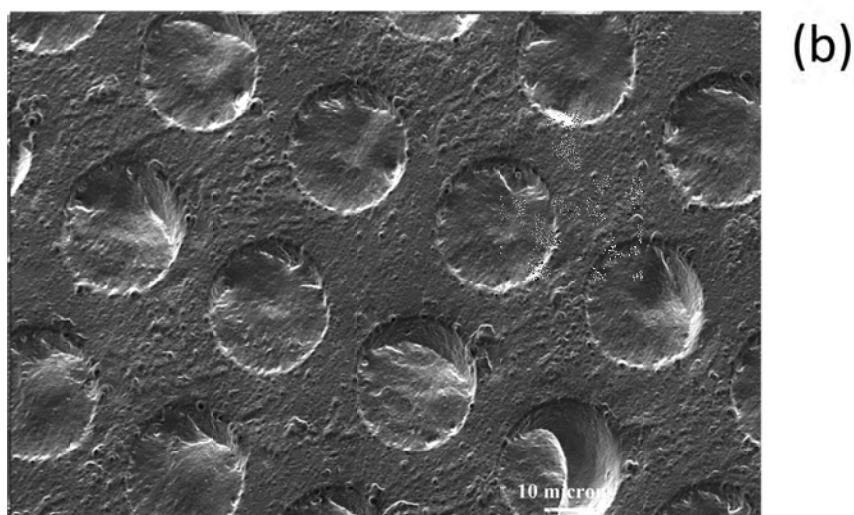
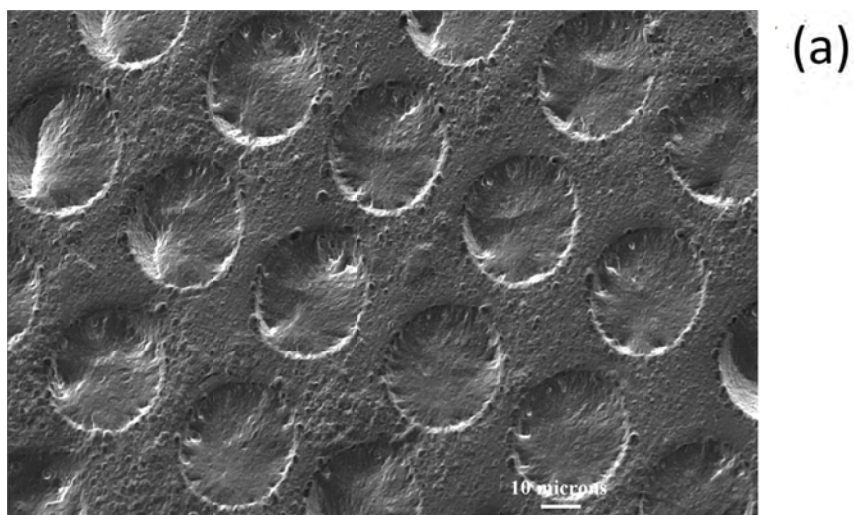


Figure 4 SEM images of silicone surfaces presenting conical features of 40 μm with separation distance of 4 μm (a), 8 μm (b) and 13 μm (c)