

This version of the electronic supplementary information (ESI) replaces the version first published on 29th October 2012. The caption of Fig. S1 has been updated following the publication of a correction notice for this article.

Electronic supplementary information

## **Breath Figure in Non-aqueous Vapor**

Jianyun Ding,<sup>a</sup> Aijuan Zhang,<sup>a</sup> Hua Bai,<sup>a</sup> Lei Li,<sup>\*a</sup> Jian Li,<sup>a</sup> Zhi Ma,<sup>b</sup>

<sup>a</sup> College of Materials, Xiamen University, Xiamen, 361005, P. R. China.

<sup>b</sup> Shanghai Institute of Organic Chemistry, Chinese Academy of Sciences, Shanghai,  
200032, P. R. China.

To whom corresponding should be addressed: [lilei@xmu.edu.cn](mailto:lilei@xmu.edu.cn) (L. Li).

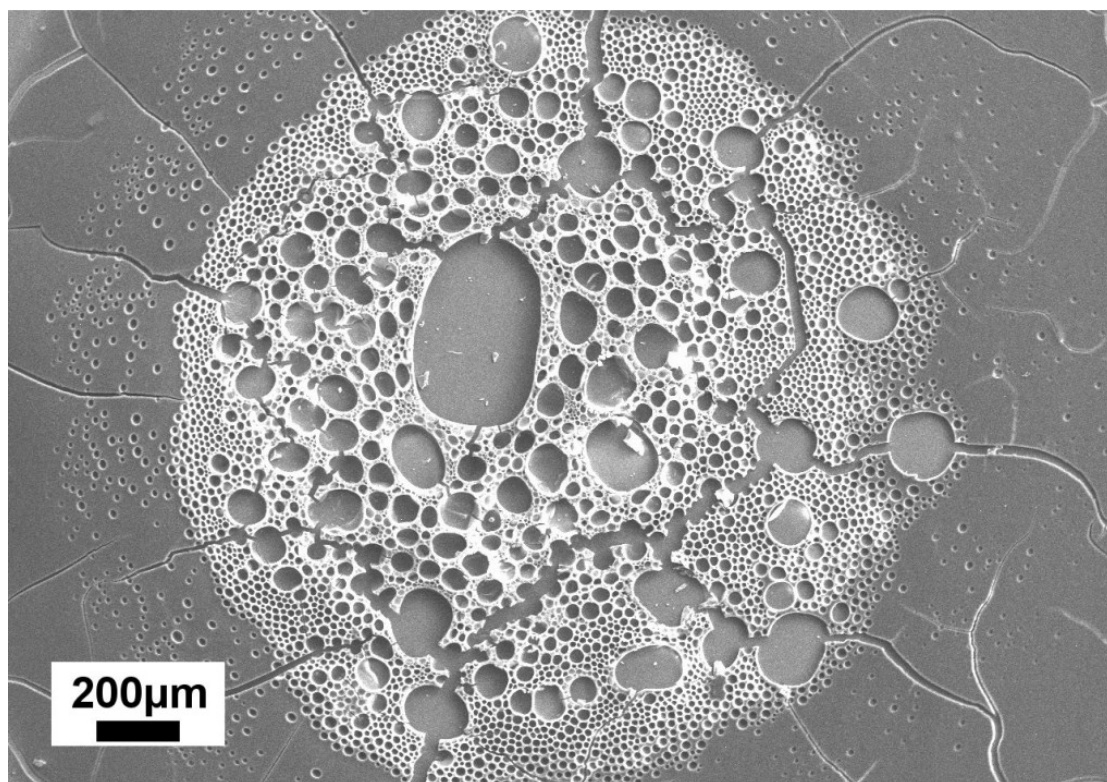
This version of the electronic supplementary information (ESI) replaces the version first published on 29th October 2012. The caption of Fig. S1 has been updated following the publication of a correction notice for this article.

**Table S1.** Properties of solvents used in this study

Solvent	H <sub>2</sub> O	Ethanol	Methanol	CS <sub>2</sub>
Density(g/cm <sup>3</sup> )	1.0000	0.7894	0.7913	1.2610
Boiling point(°C)	100.0	78.0	64.7	46.3
Surface tension(mN/m)	72.75	22.32	18.84	32.00
Enthalpy of vaporization(kJ/mol)	44.23	38.95	35.32	27.54
Compatibility with CS <sub>2</sub>	–	+	+	

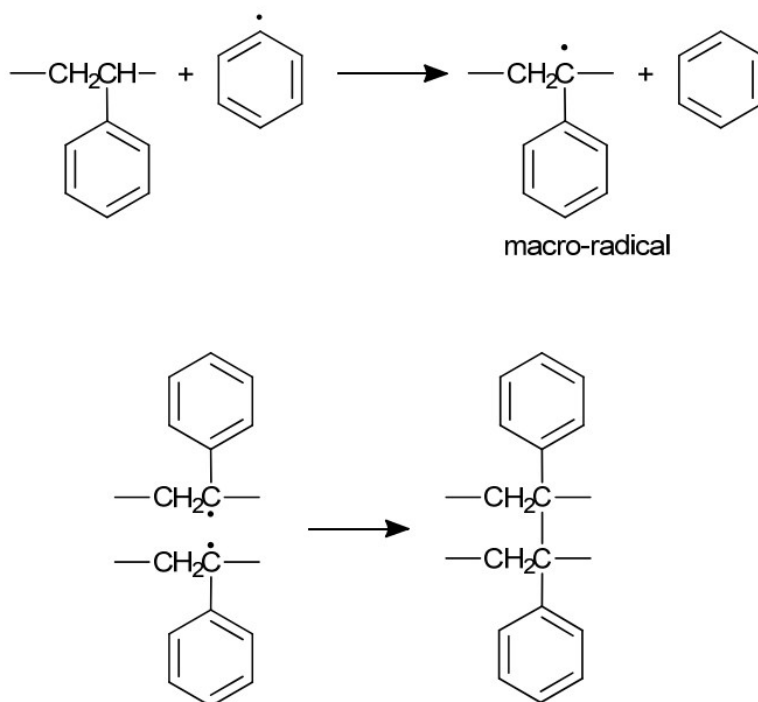
–: Immiscible; +: miscible.

This version of the electronic supplementary information (ESI) replaces the version first published on 29th October 2012. The caption of Fig. S1 has been updated following the publication of a correction notice for this article.



**Fig. S1** SEM images of micropatterns on the polymer film surfaces prepared by casting from a drop of PS-*b*-PDMS/CS<sub>2</sub> solutions with a concentration of 25 mg mL<sup>-1</sup> in methanol vapor atmosphere. Reproduced with the permission of *Acta Chemical Sinica*, 2012, 70, 45-50, DOI: 10.6023/A1107291. Copyright Shanghai Institute of Organic Chemistry, Chinese Academy of Science.

This version of the electronic supplementary information (ESI) replaces the version first published on 29th October 2012. The caption of Fig. S1 has been updated following the publication of a correction notice for this article.



**Scheme S1.** The photochemically cross-linking mechanism of PS