

Supporting Information

Fabrication of patterned agarose hydrogel matrices and culture of endothelial cells

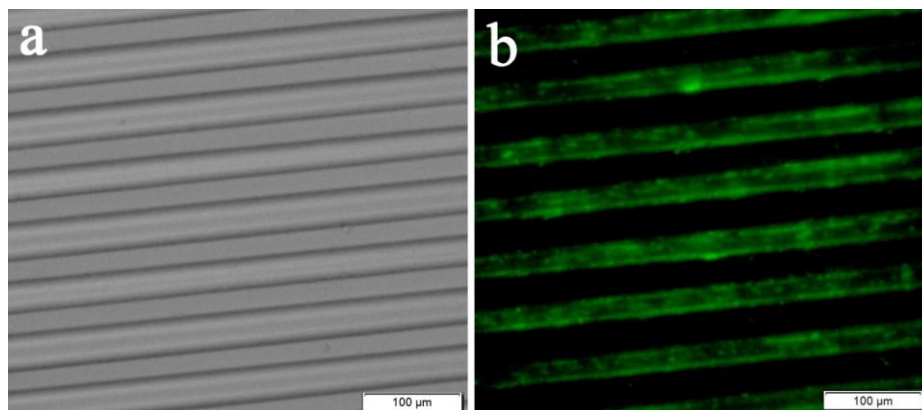


Figure S1. Representative images of agarose matrices patterned with microgroove structures with entrapped collagen moieties. Scale bars: 100 μm

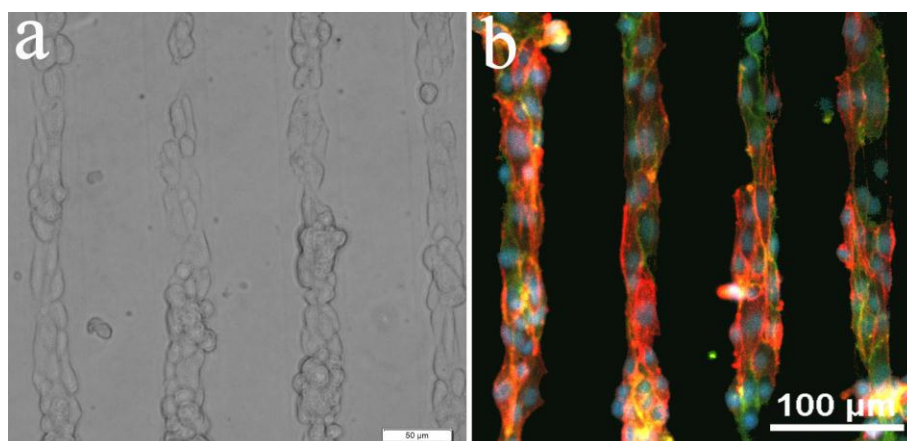


Figure S2. a, Assembling of endothelial cells on agarose matrices patterned with 50 μm - wide microgrooves. b, Cells were stained with CD31 antibody (green), rhodamine phalloidin (red) and DAPI (blue). Scale bars: 50 μm (a) and 100 μm (b)

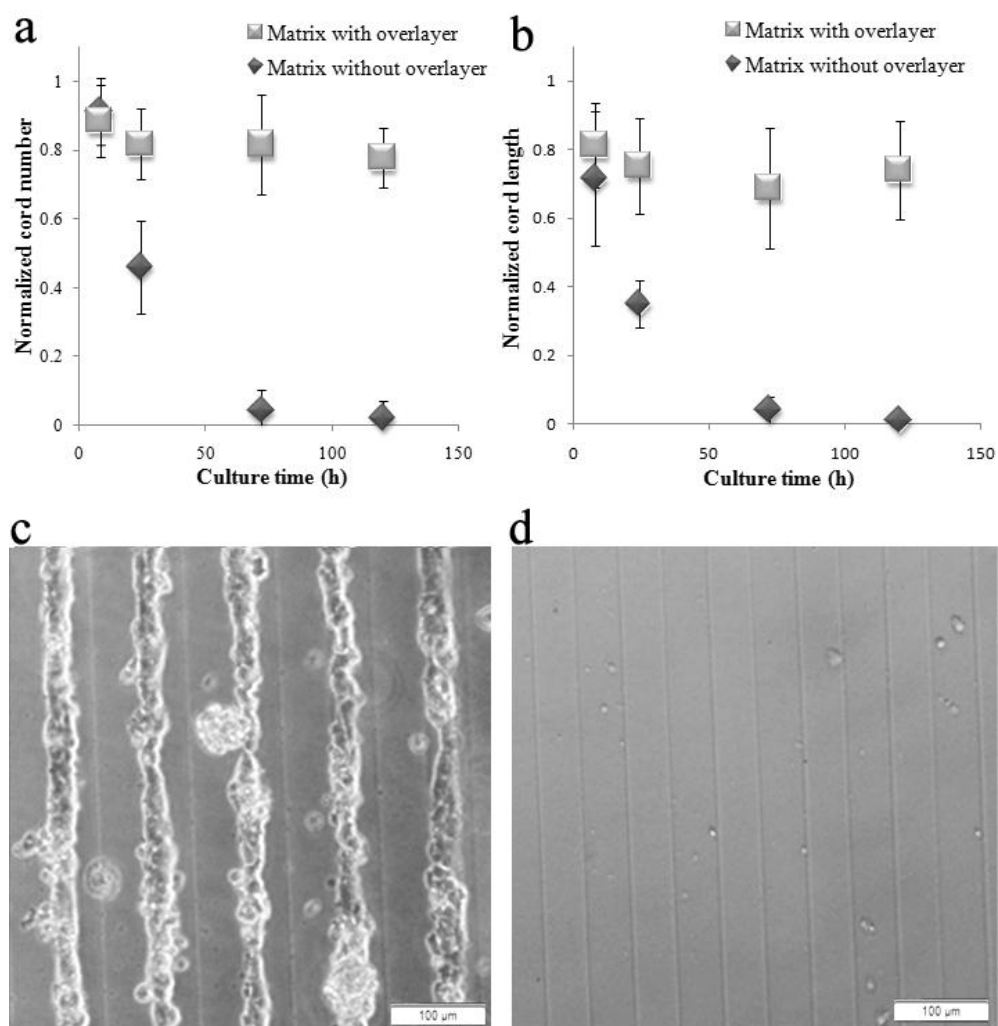


Figure S3. a and b, Comparison of the normalized cord number (a) and length (b) over 5 days on the patterned agarose matrices with or without an overlayer. c and d, Representative images of endothelial cells at day 5 on the patterned agarose matrices with and without an overlayer, respectively.

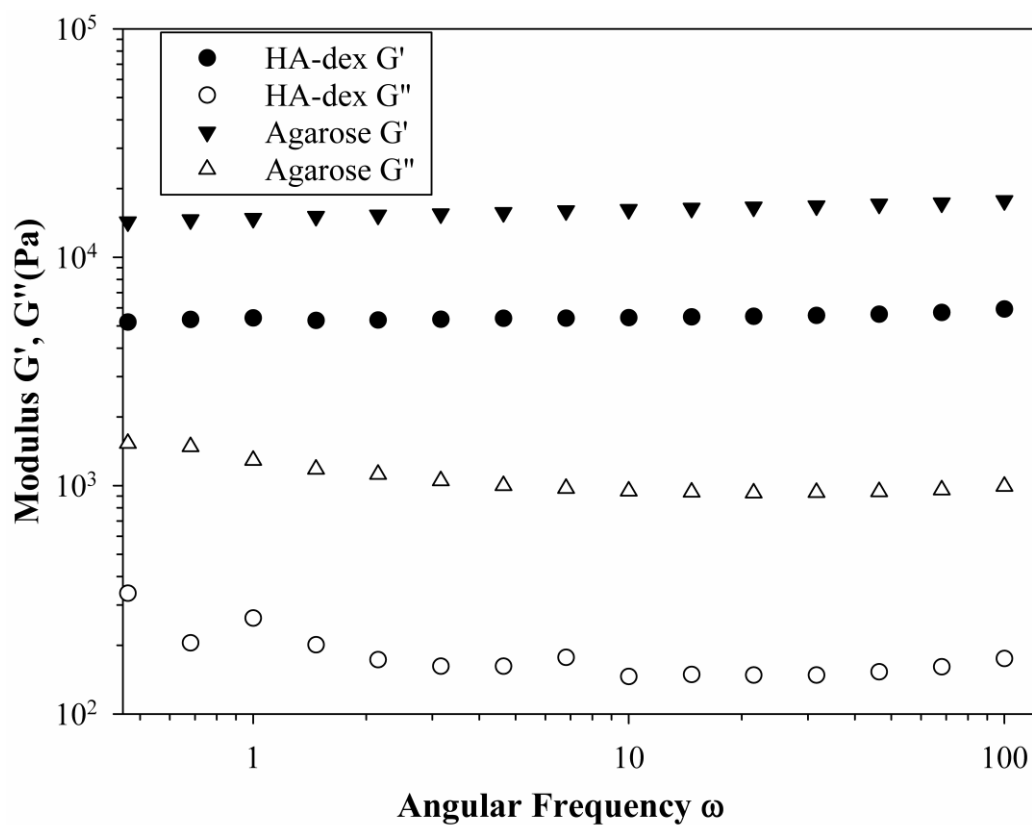


Figure S4. Dynamic mechanical measurements of storage and loss shear moduli of HA-dex and agarose hydrogels.