

Supplementary Information

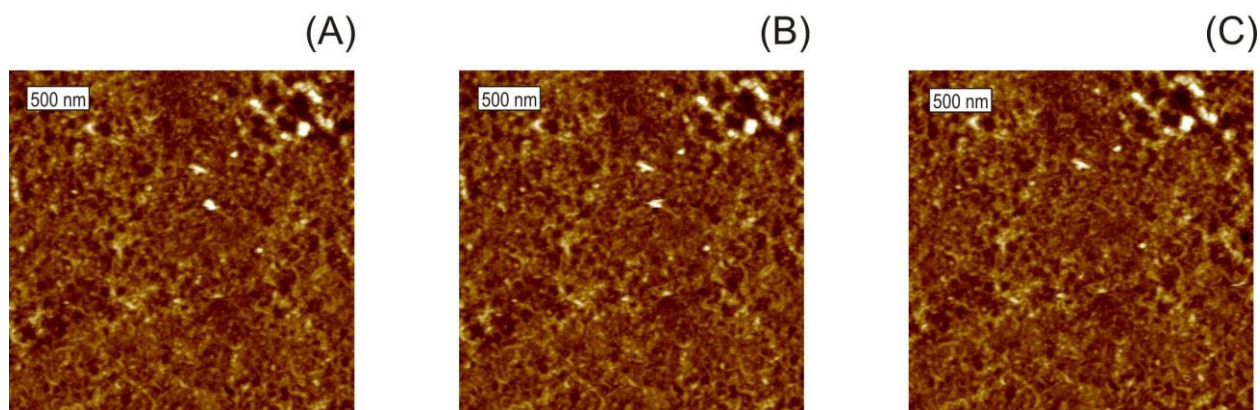


Fig. SI1. The $3 \times 3 \mu\text{m}$ AFM height images of a PB-*b*-PDMAEMA/Tyr film taken on the same spot of the sample by scanning in pH 7 buffer for 1.5 h. The AFM images (A), (B) and (C) correspond to immersion times in pH 7 buffer of 30, 60 and 90 min, respectively. Conditions: the time for the copolymer and the enzyme adsorption was 1 h and 10 min, respectively. The concentration of the copolymer was 5 mg/ml, the concentration of the enzyme was 2×10^{-4} M. Height range is 50 nm.

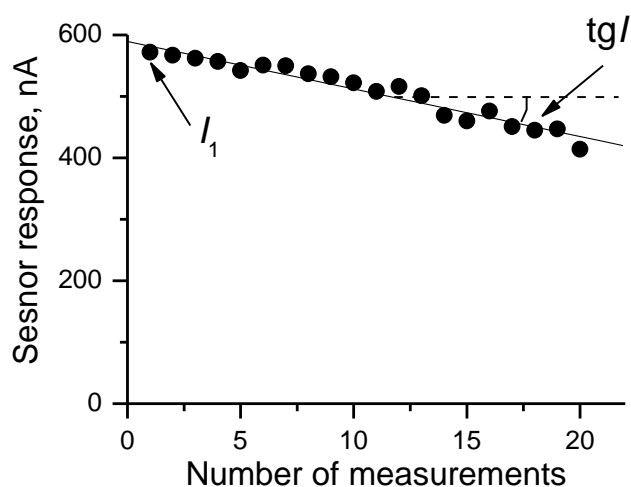


Fig SI2. The analytical signals of sensor surface for consecutive measurements of standard analyte concentration. The operational stability was characterized quantitatively as a percentage of the analytical signal change per a single measurement and was calculated according to the formula: $\Delta I = 100\% \times \text{tg}I / I_1$, where $\text{tg}I$ is the slope of the dependence of the analytical signal on the number of repeated measurements normalized to the initial analytical signal I_1 and given in percents.