

# Supplementary Information/ SM-ART-08-2012-026867

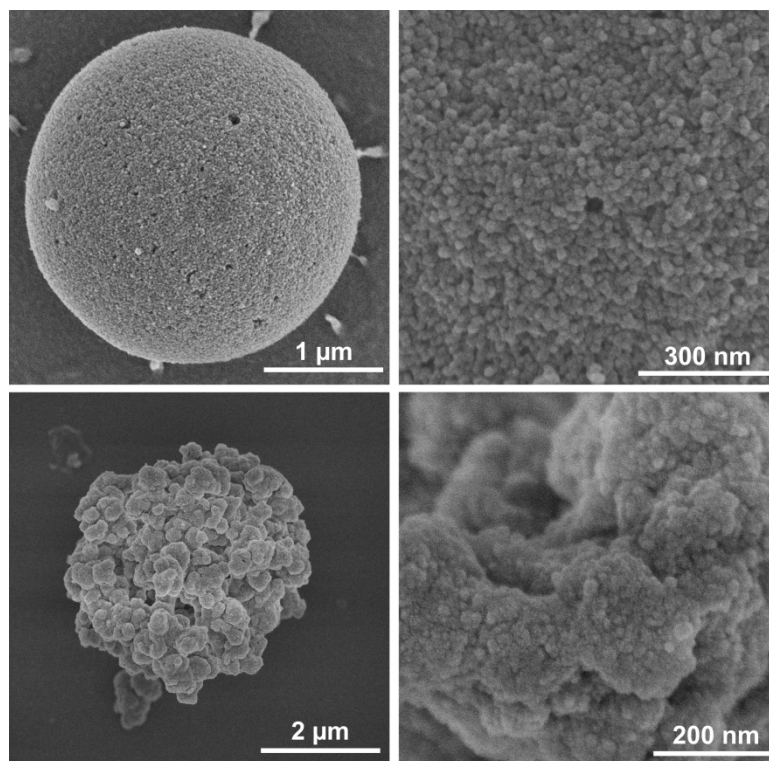


Figure S1 Scanning electron microscopy images of protein particles at different magnifications. Particles were prepared from a 25% (w/w) WPI solutions at pH 6.8 (first row) or at pH 5.5 (second row). Samples were diluted 100x in Millipore water and subsequently critical-point dried with CO<sub>2</sub> prior to analysis. Images were recorded at room temperature at a working distance of 4 mm with SE detection at 2 kV.

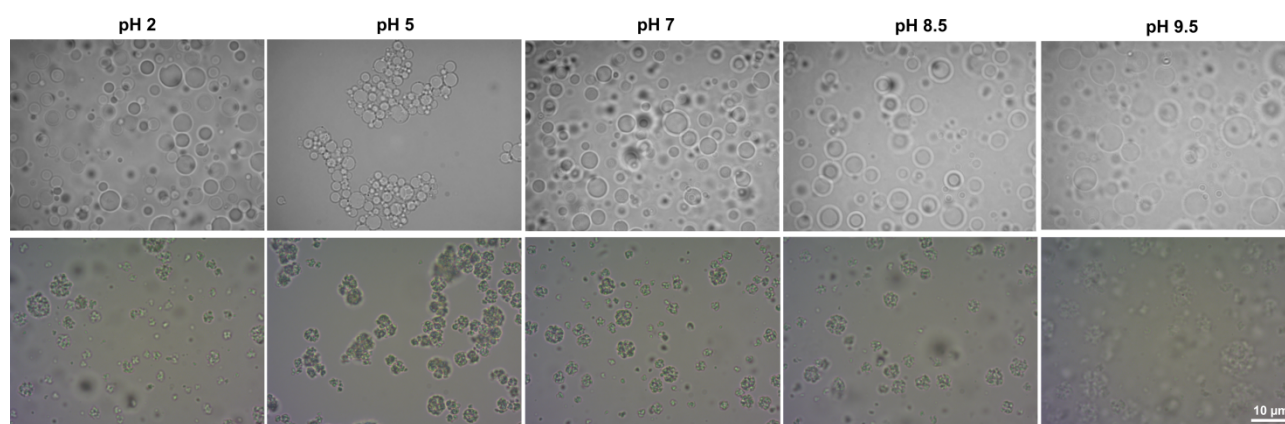


Figure S2 Optical microscopy images of protein particles as a function of pH. Particles were prepared from a 25% (w/w) WPI solutions at pH 6.8 (first row) or at pH 5.5 (second row) and dispersed in a 1% WPI solution at neutral pH ( $\sim 7$ ). The pH of the dispersions were further adjusted either with a 6M HCl or 2M NaOH.