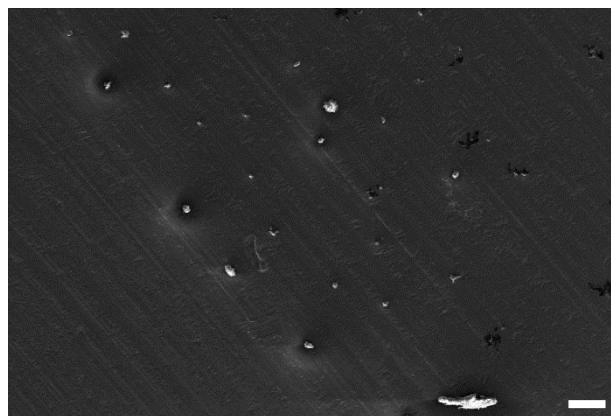


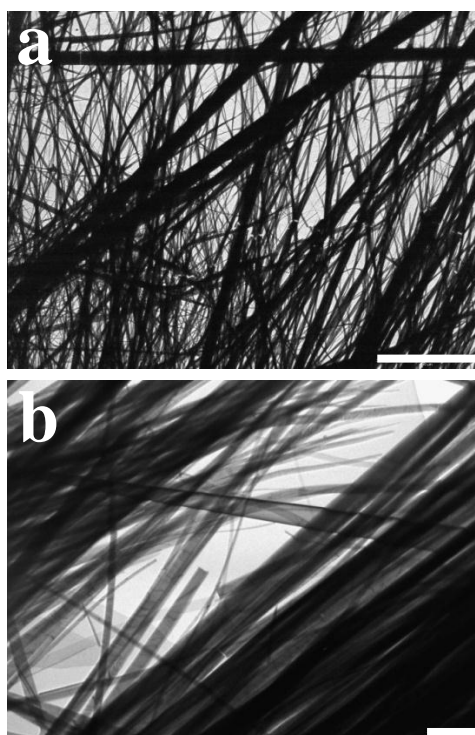
## Supplementary Information

### Single Amino Acid based Self-Assembled Structure

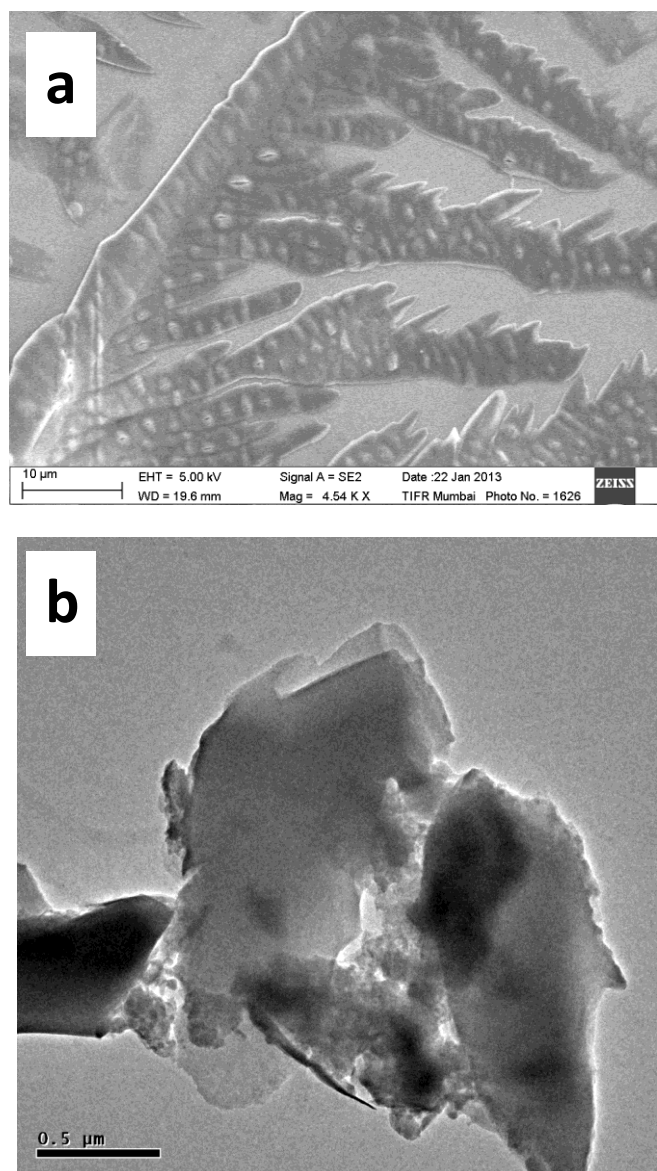
S Parween, B Chandanshive, HC Kotamarthi, D Khushalani\*<sup>[a]</sup>



**Figure. S1.** SEM Image of 1 μM L-Phe deposited on a silicon wafer. Scale bar = 100 μm



**Figure. S2.** TEM images of (a) 1mM L-Phe, scale bar = 20  $\mu\text{m}$  and (b) 1 mM L-Tyr, Scale bar = 2  $\mu\text{m}$



**Figure. S3.** (a) SEM and (b) TEM images of 1mM Glycine