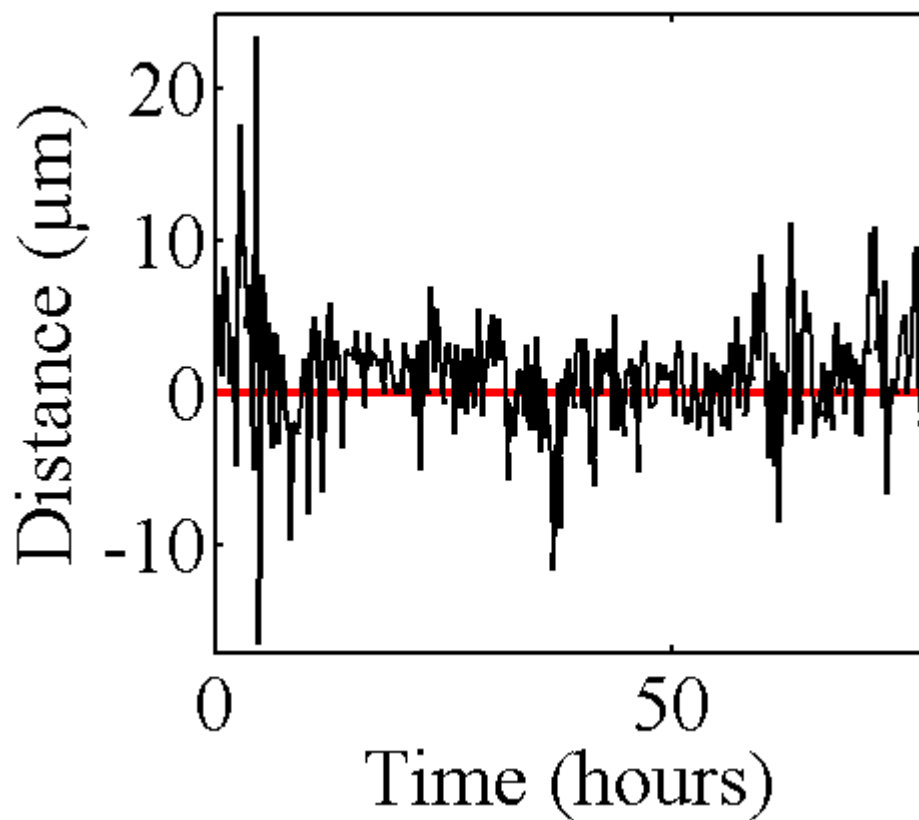
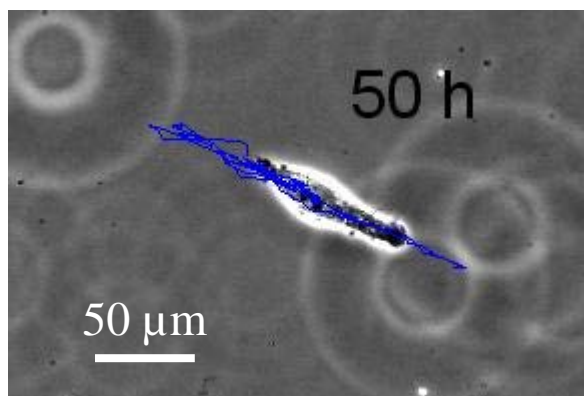


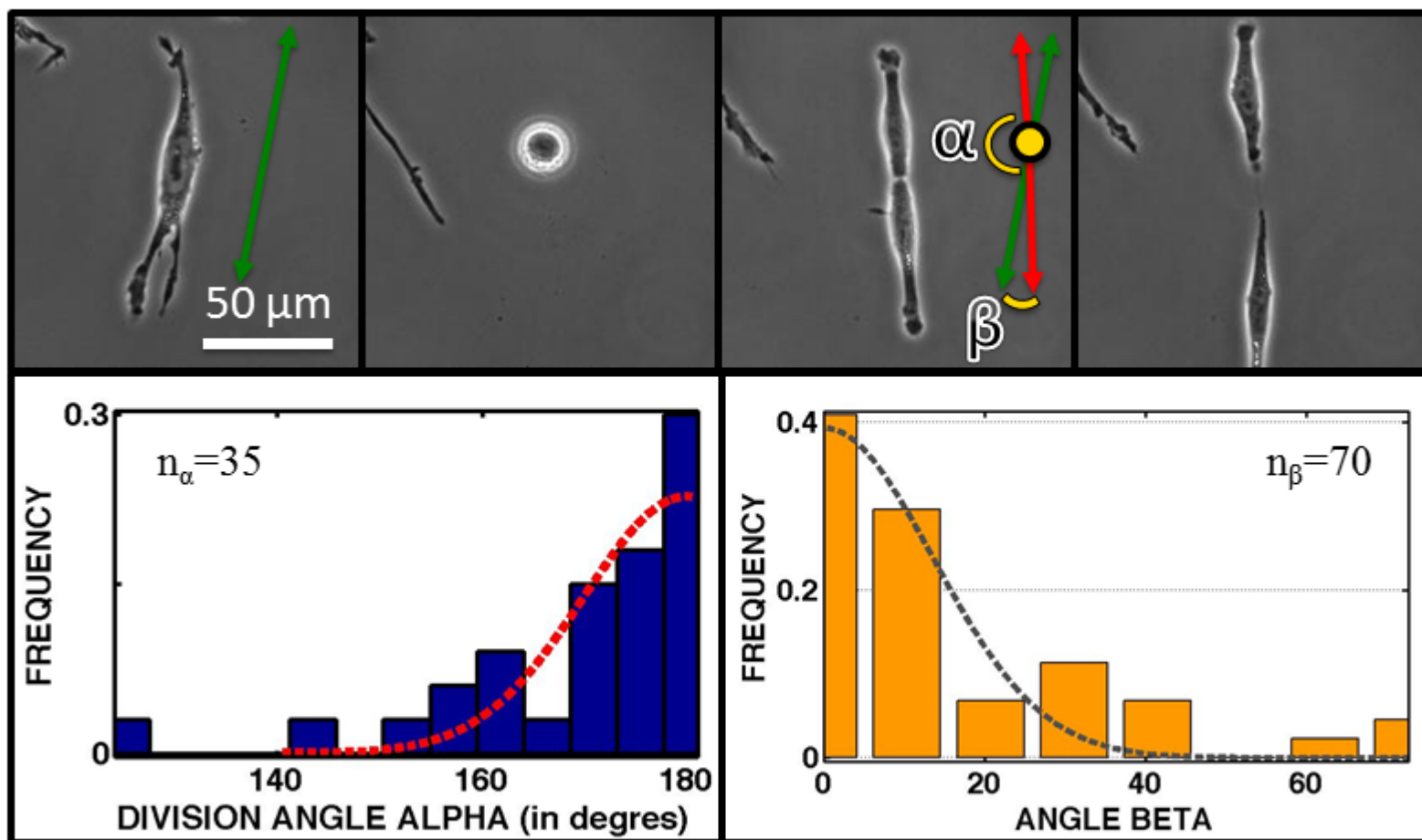
# Perfect nematic order in confined monolayers of spindle-shaped cells

## Supplementary Figures

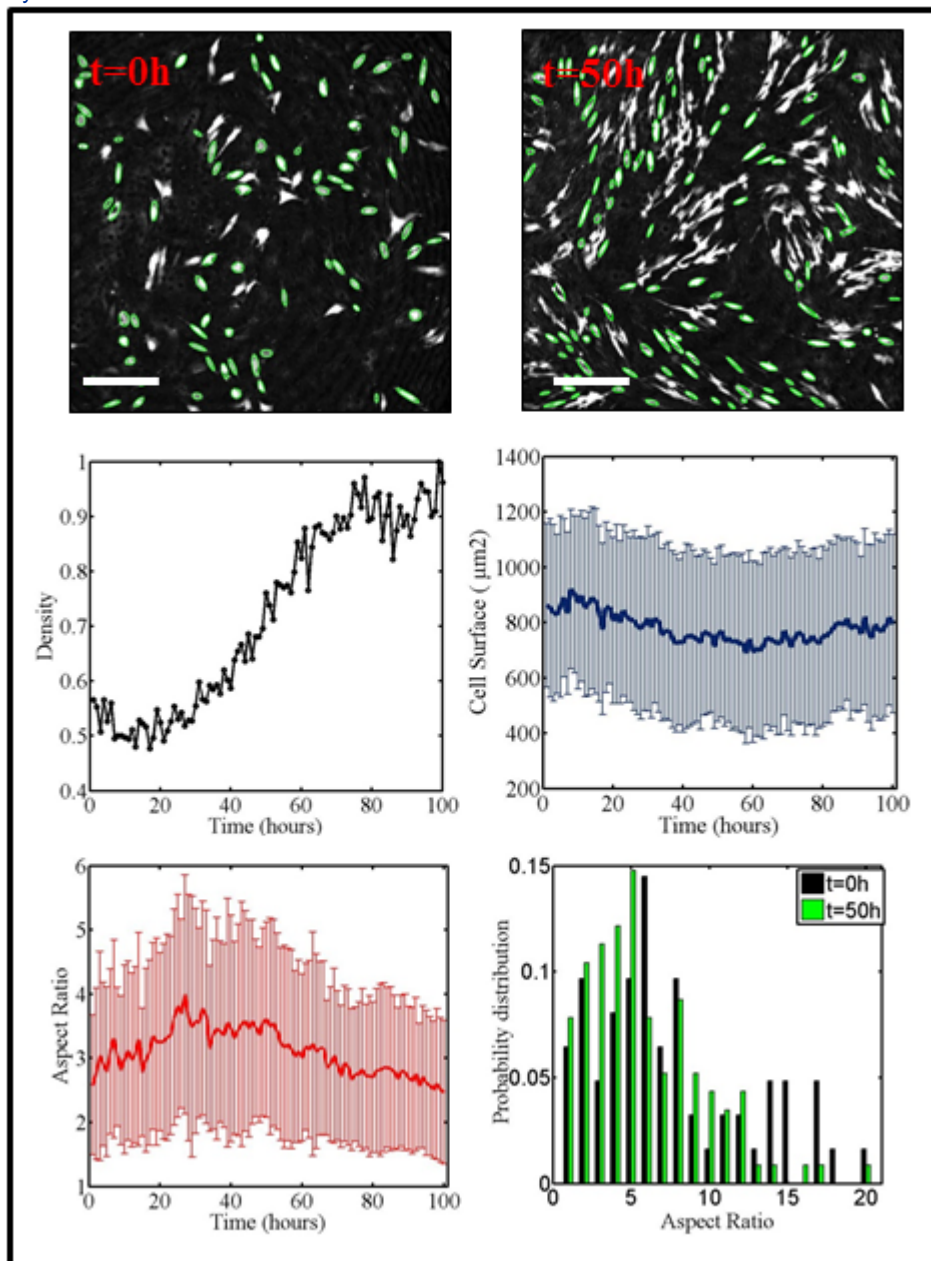
## Supplementary Figure 1



## Supplementary Figure 2

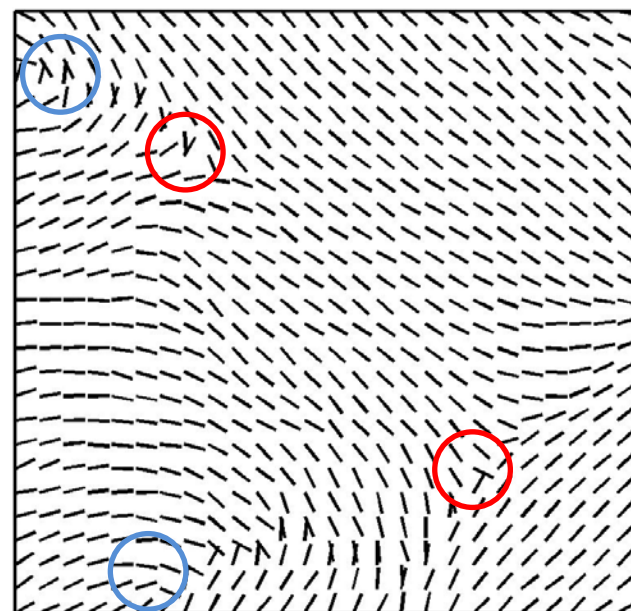
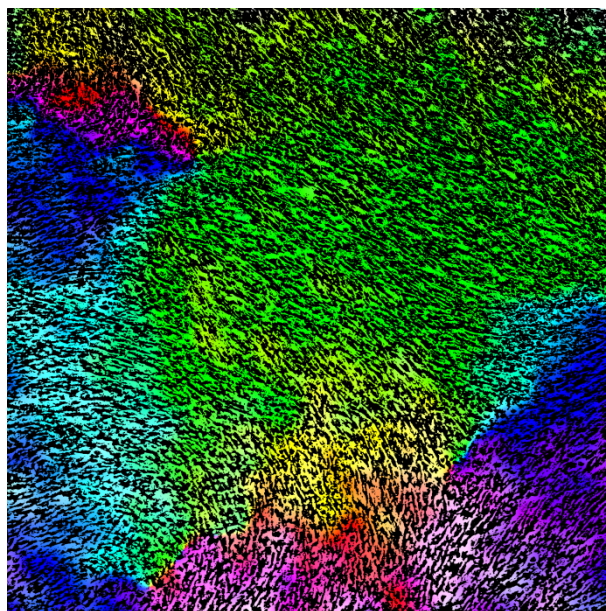
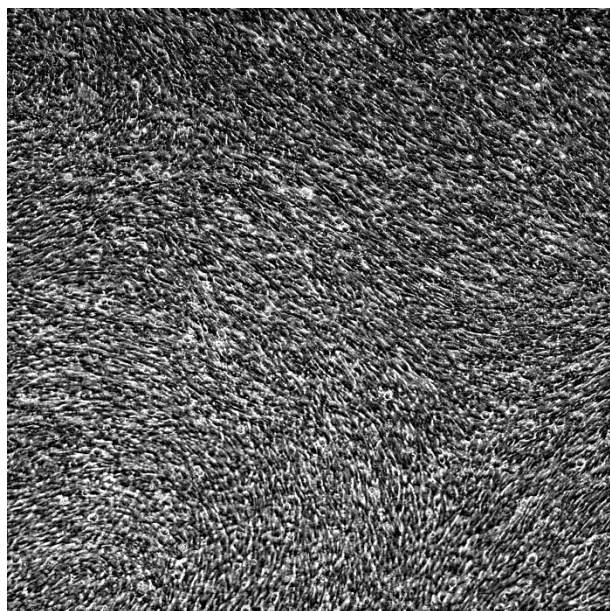


## Supplementary Figure 3



Scale : 300  $\mu\text{m}$

## Supplementary Figure 4



300  $\mu\text{m}$



## Supplementary Figure 5

