

ELECTRONIC SUPPLEMENTARY MATERIAL (ESI) FOR SOFT MATTER

Using AFM to probe the complexation of DNA with anionic lipids mediated by Ca²⁺: the role of surface pressure

Germán Luque-Caballero, Alberto Martín-Molina, Alda Yadira Sánchez-Treviño, Miguel A. Rodríguez-Valverde, Miguel A. Cabrerizo-Vílchez and Julia Maldonado-Valderrama*

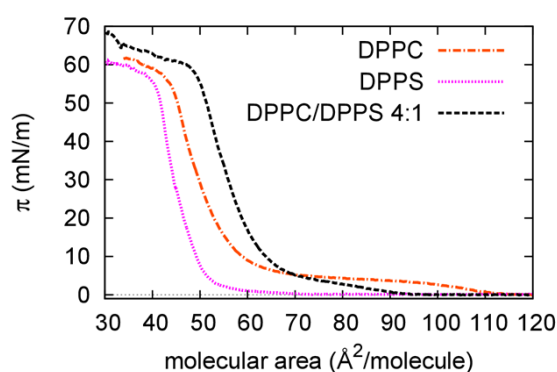


Figure S1. π -A isotherms of DPPC (orange dash-dot line), DPPS (pink dotted line) and DPPC/DPPS 4:1 (black dashed line) monolayers. Subphase: pure water. T = 20°C.

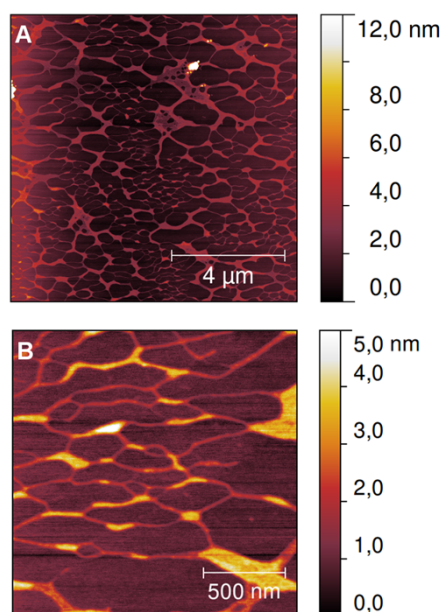


Figure S2. A) AFM topography image of LB transferred from an aqueous solution containing 5 mM CaCl₂ and 0.1 mg ml⁻¹ DNA. (B) High resolution image.