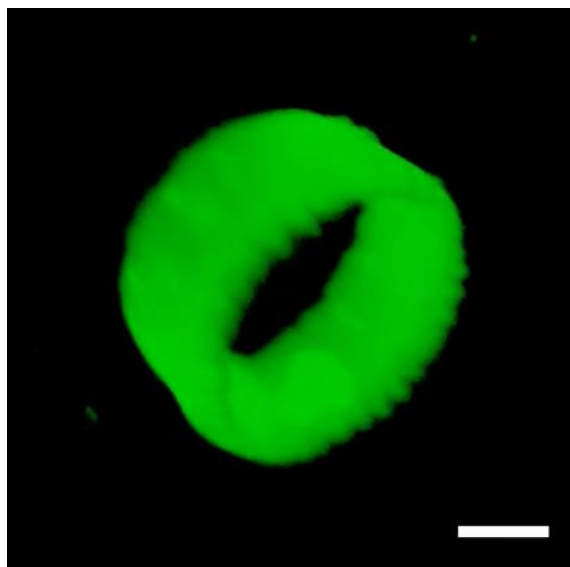


Supplementary Information for “Nonuniform growth and topological defects in the shaping of elastic sheets”

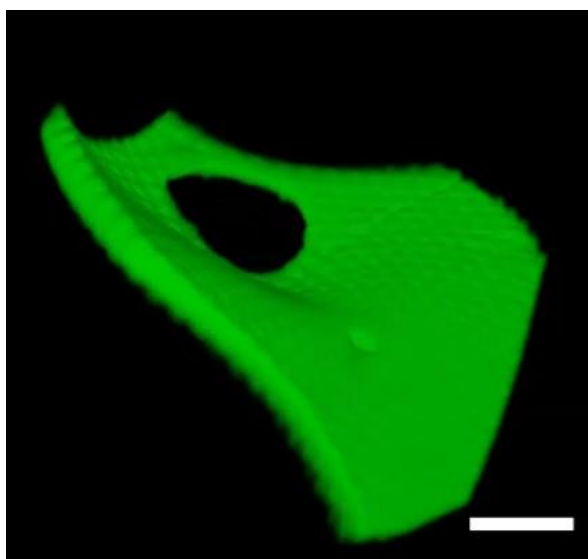
Nakul P. Bende,¹ Ryan C. Hayward,¹ and Christian D. Santangelo²

1 Department of Polymer Science, University of Massachusetts, Amherst MA, 01003

2 Department of Physics, University of Massachusetts, Amherst MA, 01003



Movie M1: Reconstructed 3-d confocal fluorescence microscopy images of a cylinder made from *poly(N-isopropylacrylamide)* prescribed with a power law metric using halftone gel lithography [2]. (Images contain an additional piece of fluorescent gel in the frame) Scale bar: 200 μm



Movie M2: A dipole (section) made by patterning a metric with two opposite Gaussian curvature singularities. Scale bar: 200 μm