

Figure 1: Phase transition from Cholesteric to BP1 with $r = 0.5 \mu\text{m}$ colloids. Scale bar $50 \mu\text{m}$

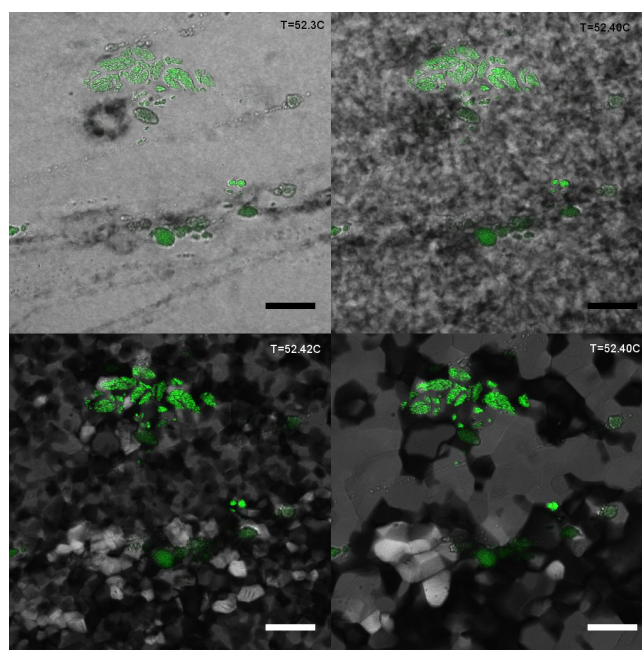


Figure 2: Phase transition from BPI to BPII with $r = 0.5 \mu\text{m}$ colloids. Scale bar $50 \mu\text{m}$

We include images of $r = 0.5 \mu\text{m}$ colloidal particles dispersed in blue phase exhibiting liquid crystal. Their behaviour is qualitatively the same as for $r = 1.5 \mu\text{m}$ colloidal particles.

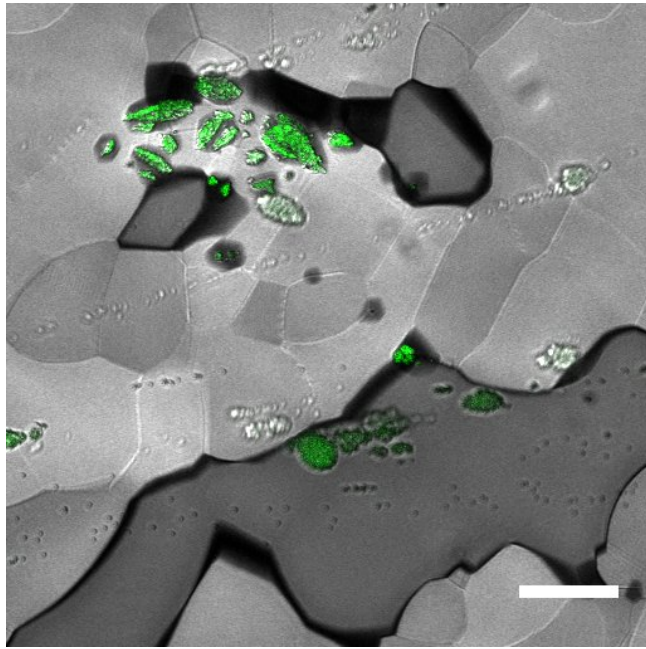


Figure 3: Facetted inclusions around $r = 0.5 \mu\text{m}$ colloids in BPII. It should be noted that the darkest regions are not melted but still in the blue phase. Scale bar $50 \mu\text{m}$