

Supporting Information

Ordered Mesoporous Carbon – Carbon Nanotube Nanocomposites as
a Highly Conductive and Durable Cathode Catalyst Support for
Polymer Electrolyte Fuel Cells

*Jae Yeong Cheon,^a Chi-Yeong Ahn,^b Dae Jong You,^c Chanhok Pak,^c Seung Hyun Hur,^b Junbom Kim,^{*b}
and Sang Hoon Joo^{*a}*

^aSchool of Nano-Bioscience and Chemical Engineering, KIER-UNIST Advanced Center for Energy, and Low Dimensional Carbon Materials Center, Ulsan National Institute of Science and Technology (UNIST), UNIST-gil 50, Ulsan 689-798, Republic of Korea. ^bSchool of Chemical Engineering & Bioengineering, University of Ulsan, Daehak-ro 102, Ulsan 680-749, Republic of Korea, ^cEnergy Lab., Samsung Advanced Institute of Technology, Samsung Electronics Co. Ltd., San 14-1, Nongseo-dong, Giheung-gu, Yongin-Si, Gyeonggi-do 446-712, Republic of Korea.

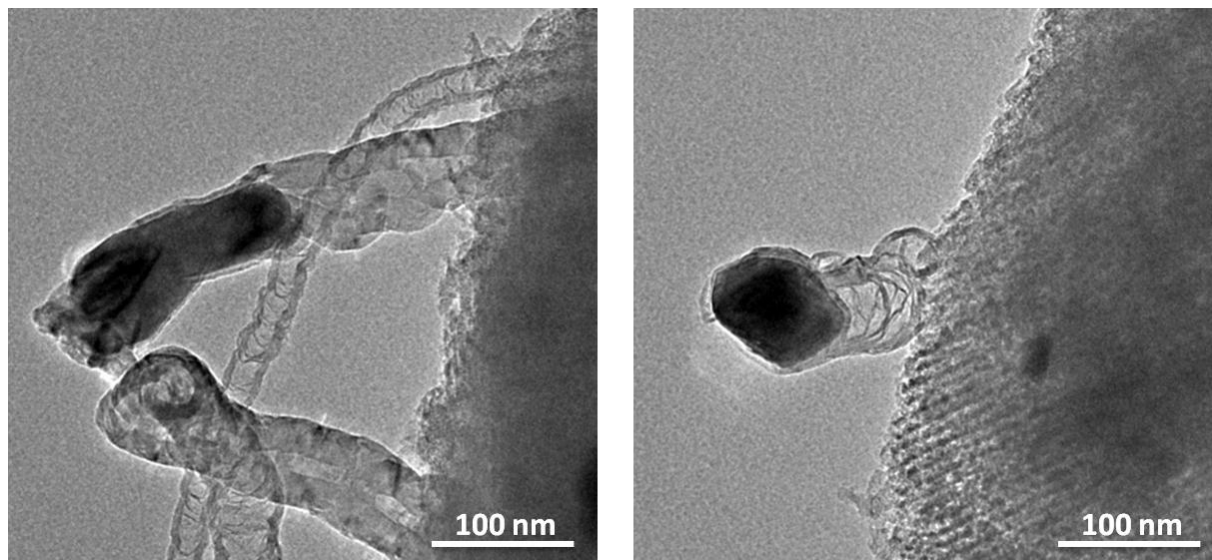


Fig. S1. TEM images of the carbon/SBA-15 composite during the preparation of OMC-CNT nanocomposites.

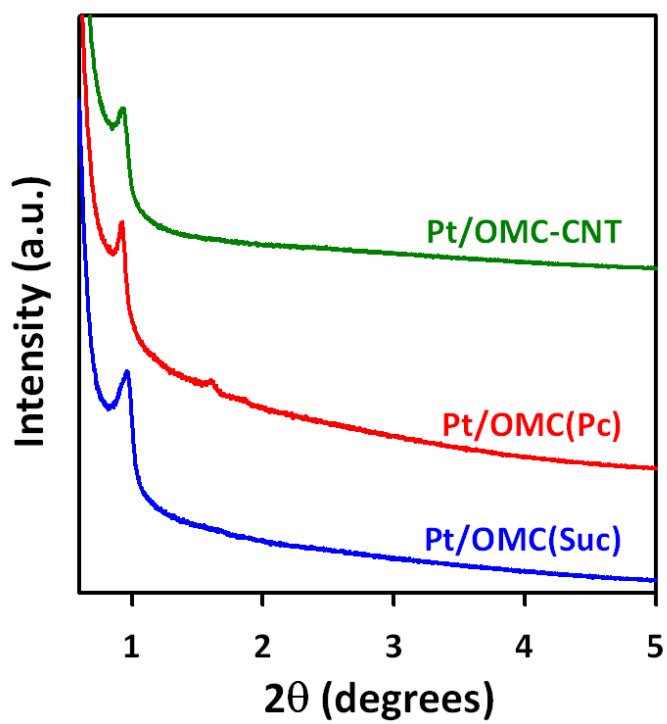


Fig. S2. Small-angle XRD patterns of Pt/OMC catalysts.

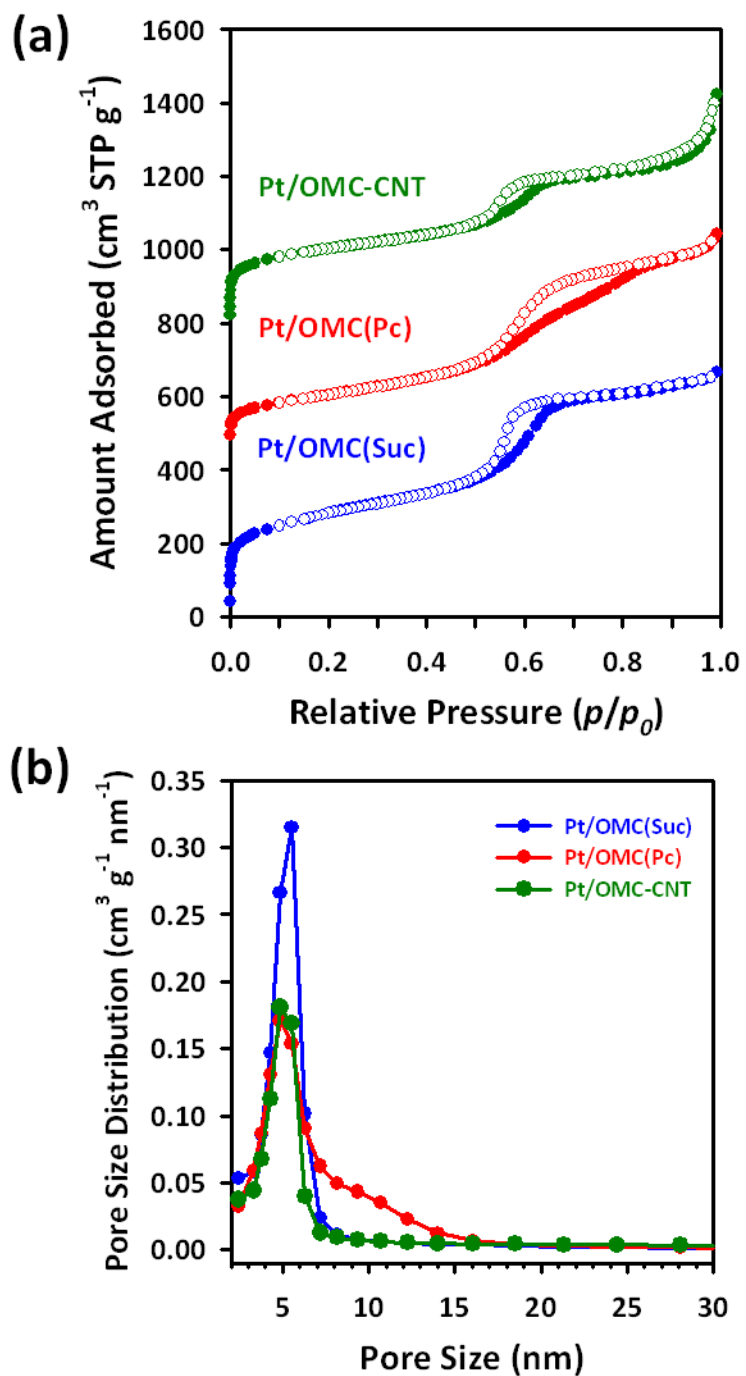


Fig. S3. (a) Nitrogen adsorption-desorption isotherms and (b) corresponding pore size distribution of Pt/OMC catalysts determined by the BJH method.