

## Supporting Information

### Hierarchical self-assembly of microscale leaf-like CuO on graphene sheets for high-performance electrochemical capacitors

Bing Zhao,<sup>a</sup> Peng Liu,<sup>a</sup> Hua Zhuang,<sup>a</sup> Zheng Jiao,<sup>a</sup> Tao Fang,<sup>a</sup> Weiwen Xu,<sup>a</sup> Bo Lu,<sup>b</sup> and Yong Jiang<sup>a,\*</sup>

<sup>a</sup> School of Environmental and Chemical Engineering, Shanghai University, Shanghai 200444, PR China

<sup>b</sup> Instrumental Analysis and Research Center, Shanghai University, Shanghai 200444, PR China

\* Corresponding author. Tel/fax: +86 21 66137508.

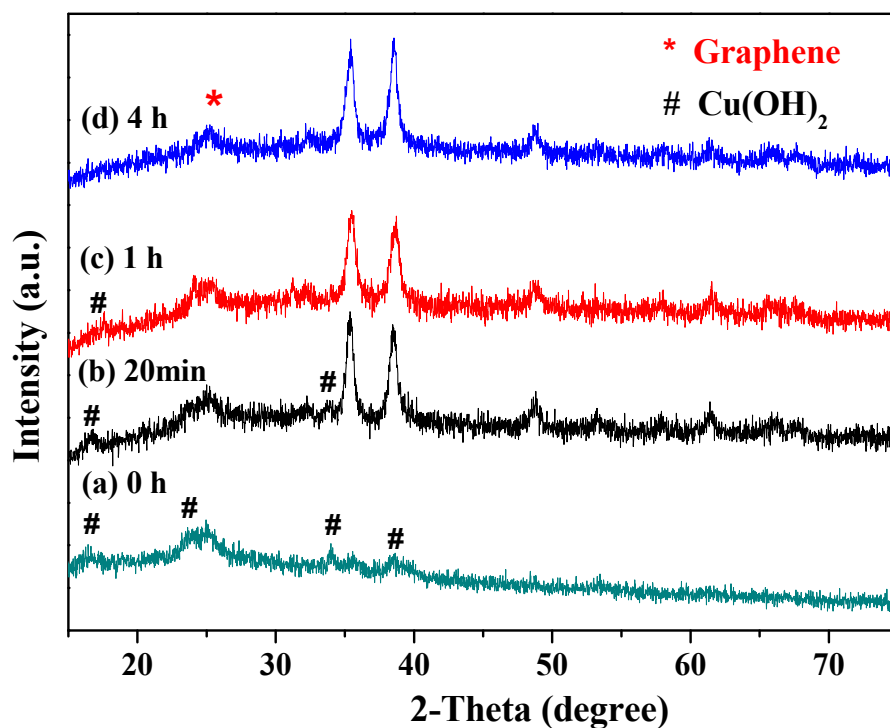
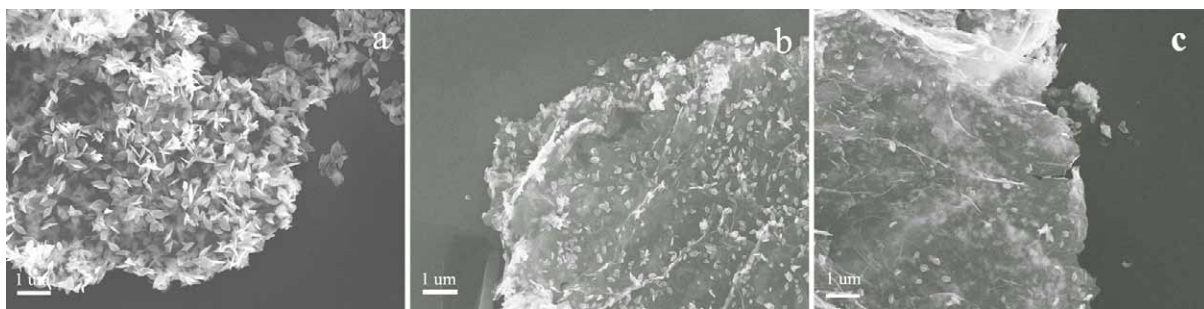


Fig. S1. XRD patterns of CuO/graphene at different hydrothermal reaction time intervals

(a) 0 min; (b) 20min; (c) 1 h; (c) 4 h.



**Fig. S2.** SEM images of CuO/graphene with different mass ratio

(a) CuO/G<sub>2</sub>; (b) CuO/G<sub>1.4</sub>; (c) CuO/G<sub>1</sub>