

**Supporting Information for “Highly loaded CoO/graphene
nanocomposites as lithium-ion anodes with superior
reversible capacity”**

Yue Qi, Hui Zhang*, Ning Du and Deren Yang

State Key Lab of Silicon Materials and Department of Materials Science and Engineering, and Cyrus Tang Center for Sensor Materials and Applications, Zhejiang University, Hangzhou, 310027, People's Republic of China

*Electronic mail: meszhanghui@zju.edu.cn

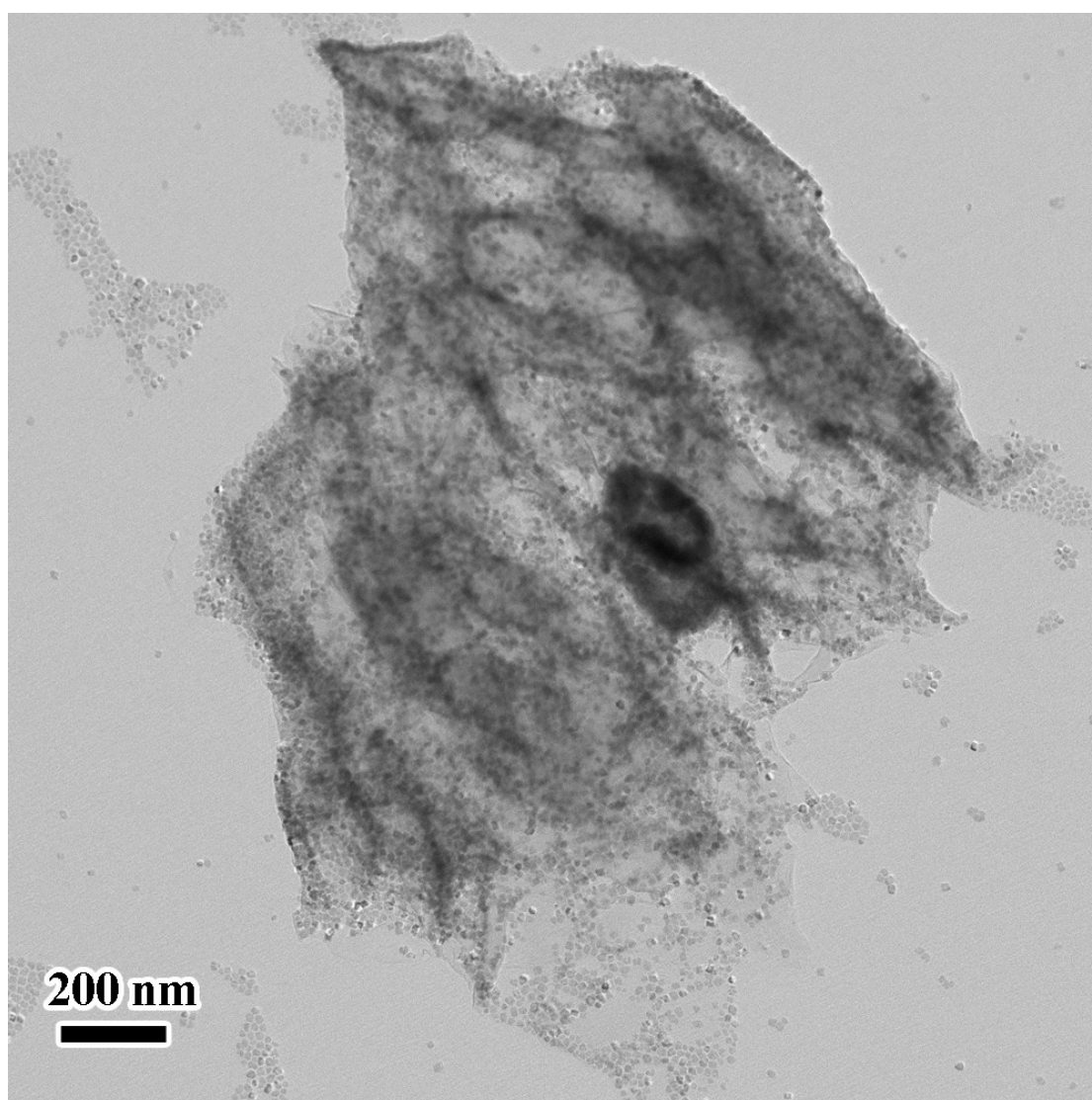


Fig. S1 TEM image of the CoO/graphene nanocomposites obtained using the standard procedure, except for the loading of CoO by increasing the amount of the precursor 0.35 g of $\text{Co}(\text{acac})_3$.