

Electronic Supplementary Information

GC spectra from the reaction of solvothermal alcoholysis (Fig. S1), XRD of the resulting graphitized carbon (Fig. S2), SEM image of the resulting carbon (Fig. S3)

5

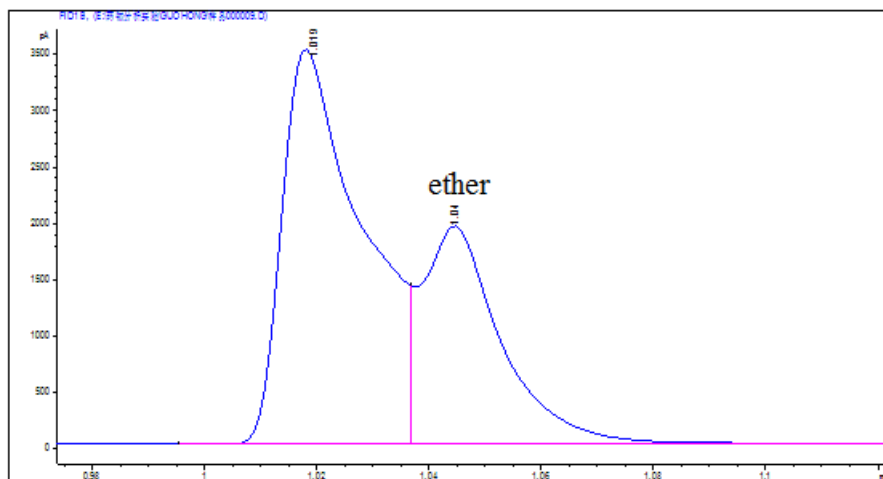


Fig. S1. GC spectra from the reaction of solvothermal alcoholysis. (after 6 h of reaction time).

10

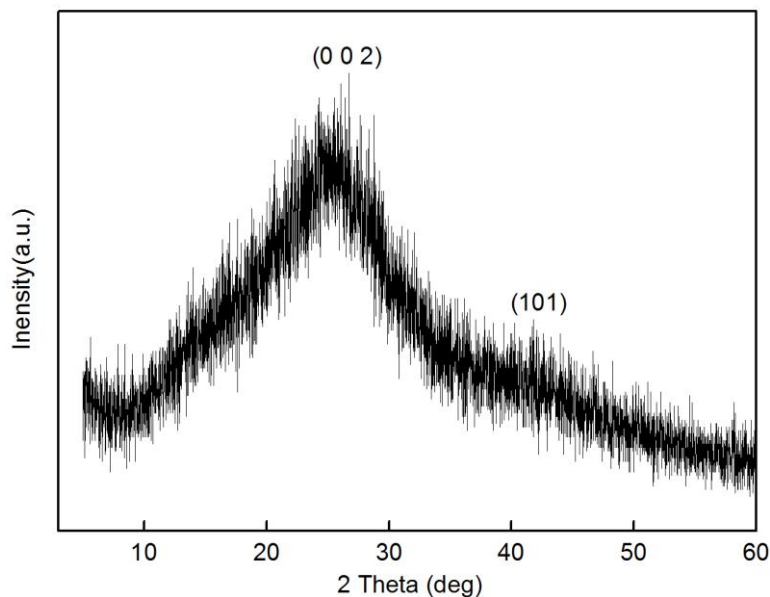
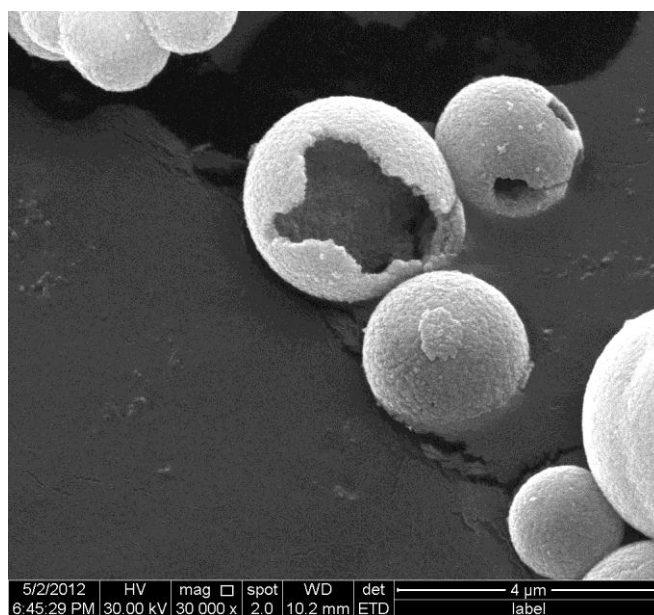


Fig. S2. XRD of the resulting graphitized carbon after 98 wt% H_2SO_4 was used to remove the SnO_2 .

15



20

Fig. S3. SEM image of the resulting graphitized carbon after 98 wt% H₂SO₄ was used to remove the SnO₂.