

Electronic Supplementary Information

Tunable method for nonwetting surfaces based on nanoimprint lithography and hydrothermal growth

Hak-Jong Choi,^a Ju-Hyeon Shin,^a Soyoung Choo,^a Jinseung Kim^a and Heon Lee*^a

Department of Materials Science and Engineering,
Korea University, 5-1 Anam-dong,
Seongbuk-gu, Seoul, 136-701, Republic of Korea,
Fax: +82232903284; Tel: +82232903284;
E-mail: heonlee@korea.ac.kr

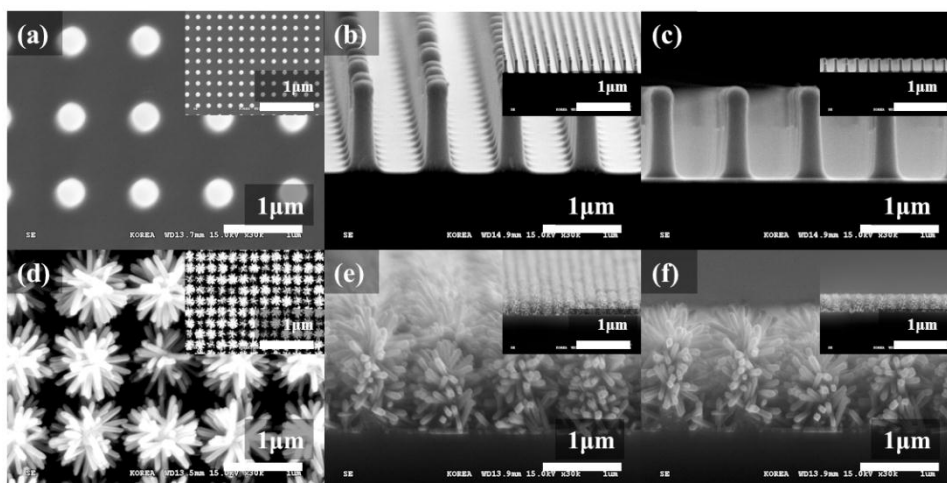


Figure S1. SEM micrograph of pillar-shaped TiO_2 micro structure and hierarchical structure: (a), (d) top-view, (c), (e) tilted-view, and (c), (f) cross-sectional view.

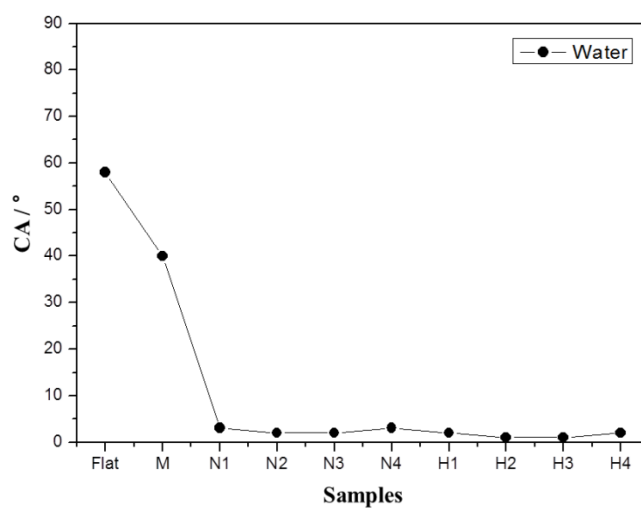


Figure S2. Contact angle of 10 kinds of unmodified-TiO₂ structure for water.

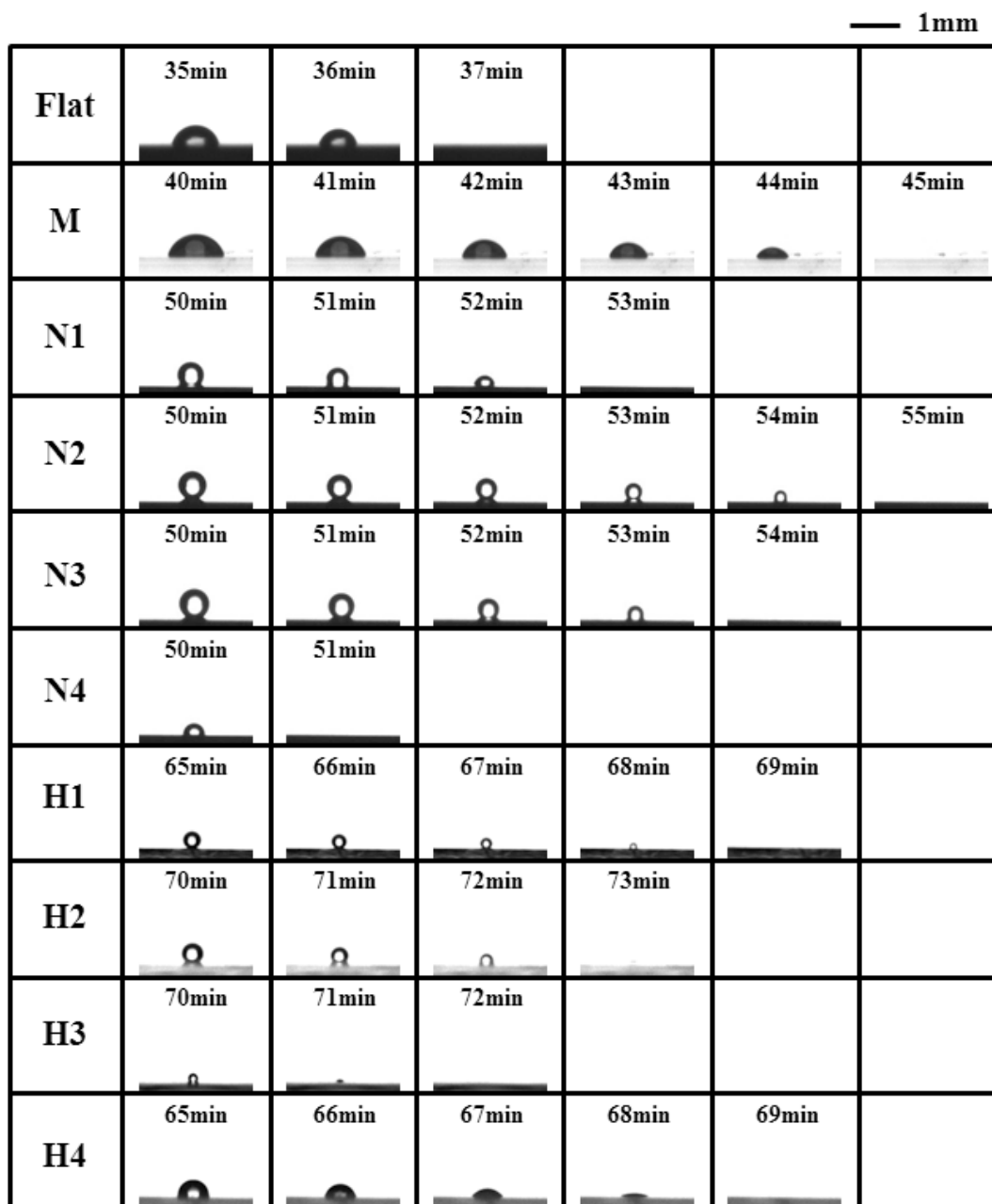


Figure S3. Variations in water droplets on 10 kinds of TiO₂ structures before complete evaporation.