

Supplementary Information

LiNi_{1/3}Co_{1/3}Mn_{1/3}O₂ hollow nano/micro hierarchical microspheres with enhanced performances as cathodes for Lithium-ion Batteries

Jili Li, Chuanbao Cao,* Xingyan Xu, Youqi Zhu and Ruimin Yao

Research Centre of Materials Science, Beijing Institute of Technology, Beijing
100081, China

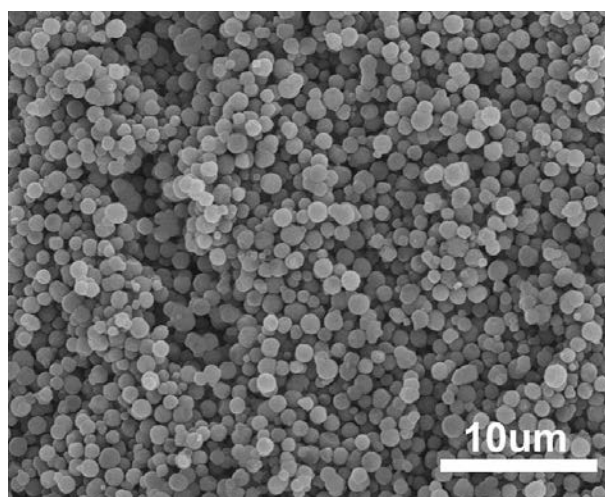


Figure S1. SEM image of MnCO₃ microspheres.

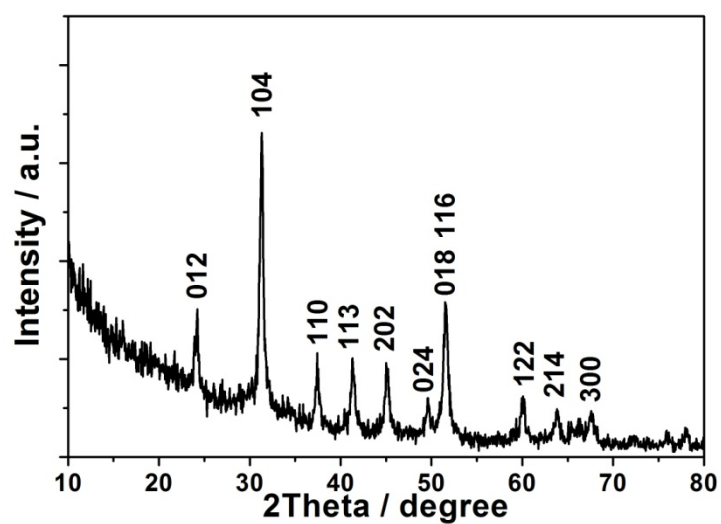


Figure S2. XRD pattern of MnCO₃ microspheres (JCPDS Card No.: 83-1763).

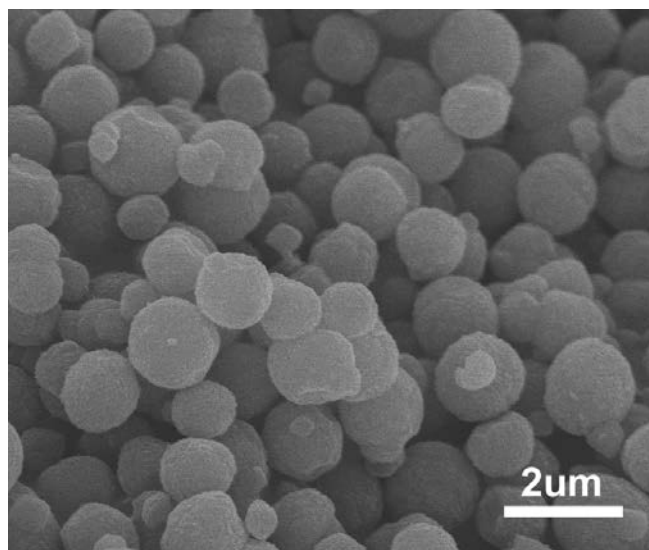


Figure S3. SEM image of MnO₂ microspheres.

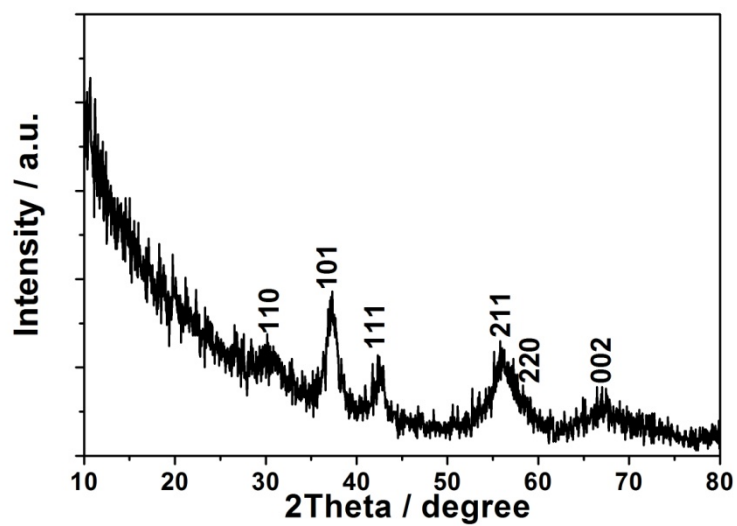


Figure S4. XRD pattern of MnO₂ microspheres (JCPDS Card No.: 24-0735).

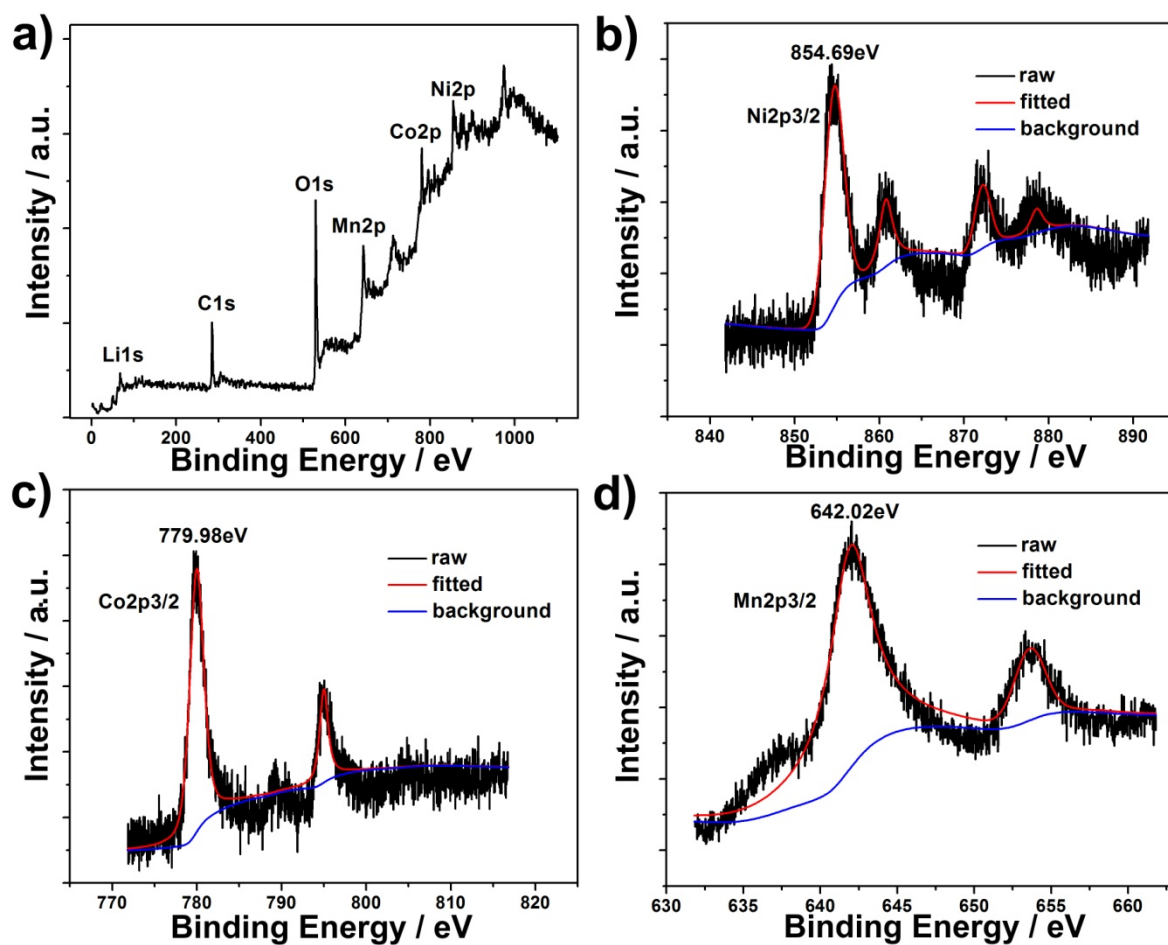


Figure S5. (a) XPS curves of NCM-HS. (b) Ni. (c) Co. (d) Mn.

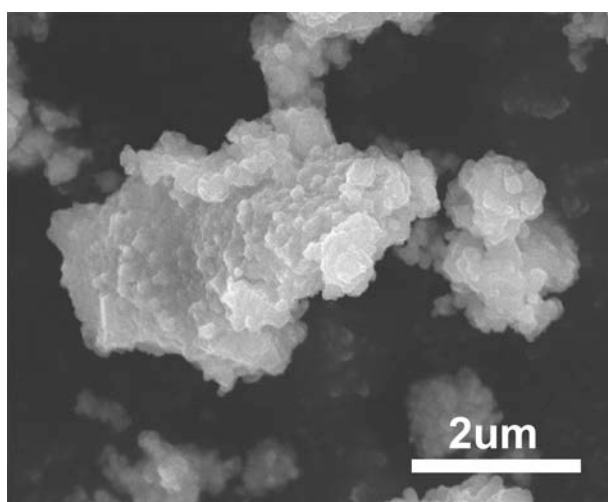


Figure S6. The SEM image of NCM-bulk.

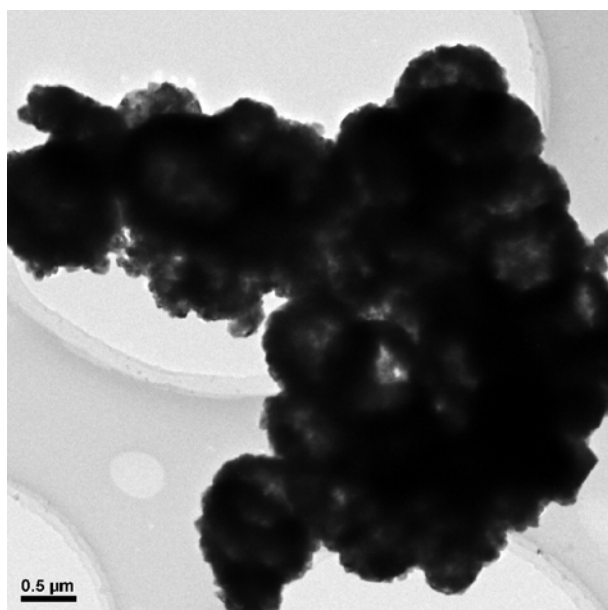


Figure S7. The TEM image of NCM-HS.

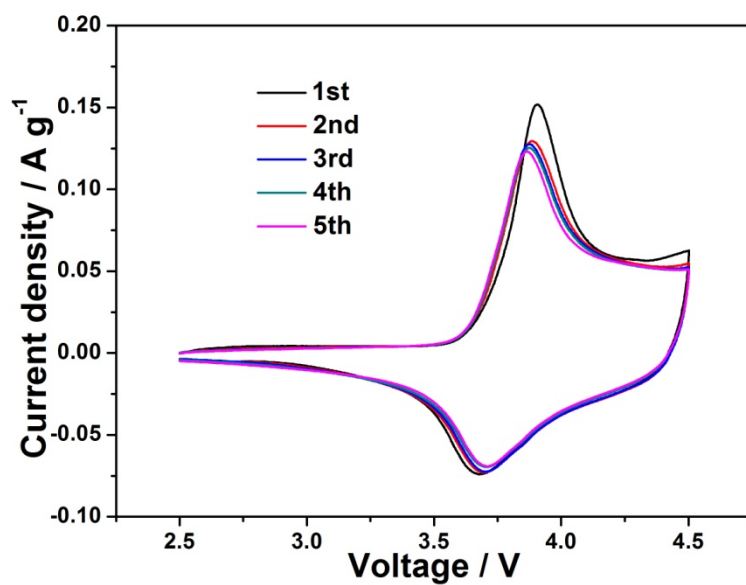


Figure S8. The first five cyclic voltammetric (CV) curves of NCM-HS cathode in the voltage range of 2.5–4.5 V at the scan rate of 0.1 mV s⁻¹.