

Electronic Supplementary Information

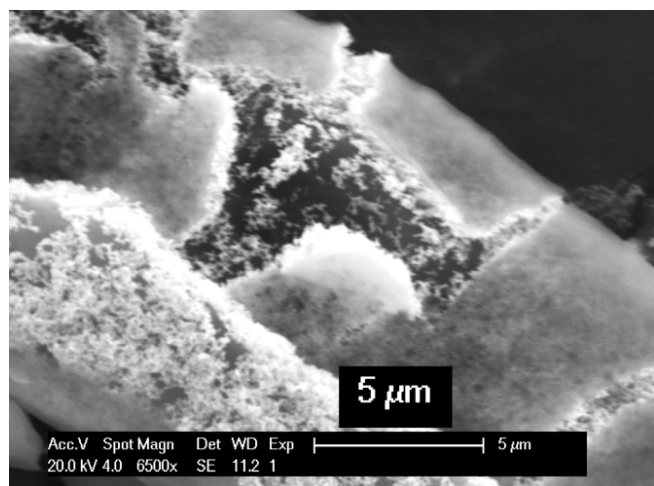


Figure S1: Figure showing the broken tubular morphology of the Pt-alanine micro assembled structure (synthesized by reduction in the absence of stirring)

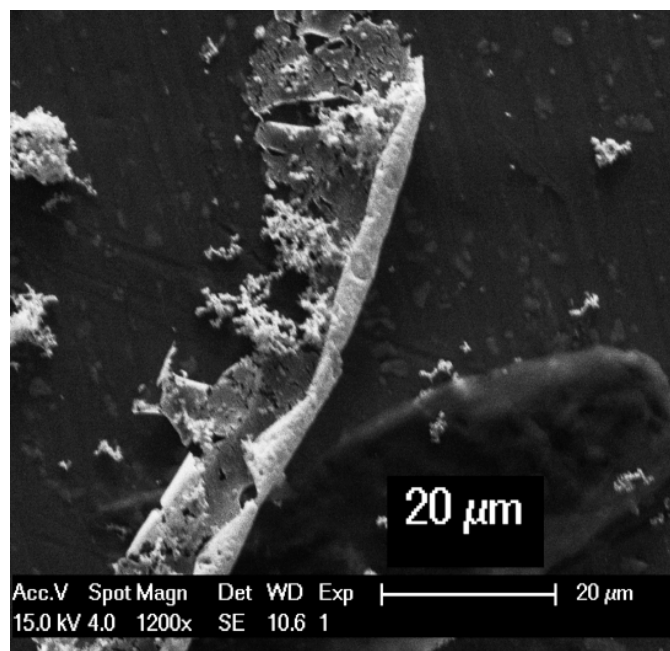


Figure S2: Figure shows the slice of a tube without any carbon-skeleton clearly evidencing the connectivity of the platinum structure.

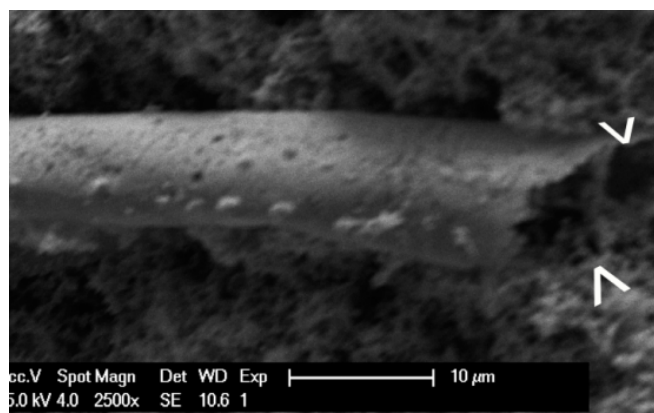


Figure S3: Figure shows a hollow tube of platinum

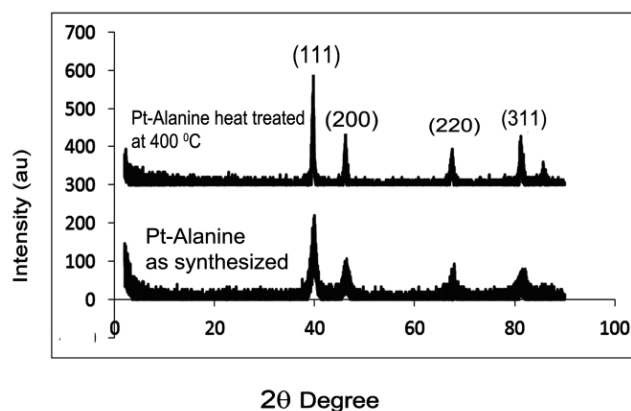


Figure S4 XRD patterns of Pt-alanine superstructures before and after heat-treatment

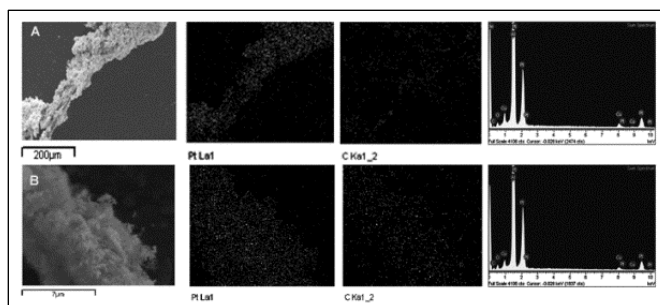


Figure S5: EDS based smart maps of (A) as-synthesized and (B) heat treated platinum-alanine superstructures in conjunction with the corresponding spectra (synthesized by reduction in the absence of stirring)