

Electronic Supplementary Material (ESI) for

**Morphology dependence of molybdenum disulfide transparent
counter electrode in dye-sensitized solar cells**

B. Lei, G. R. Li* and X. P. Gao

Institute of New Energy Material Chemistry, Synergetic Innovation Center of Chemical
Science and Engineering (Tianjin), Tianjin Key Laboratory of Metal and Molecule Based
Material Chemistry, Nankai University, Tianjin 300071, China

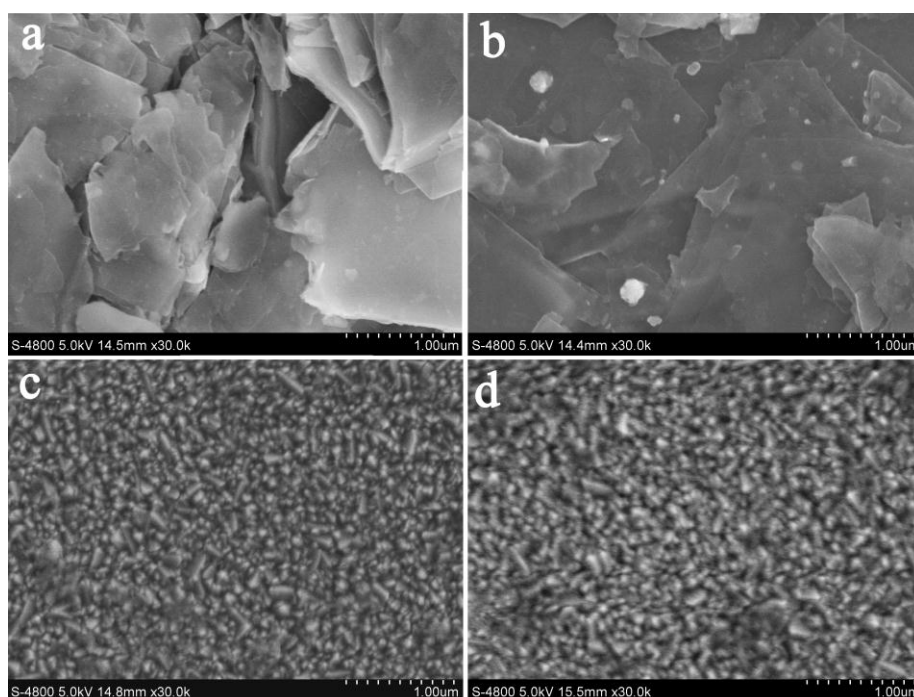


Fig. 1S Surface SEM images of the counter electrodes made of ML-MoS₂ (a), FL-MoS₂ (b), MoS₂-NPs (c) and Pt (d).