

ARTICLE

Electronic Supplementary Information (ESI) available: See  
 DOI: 10.1039/c000000x/

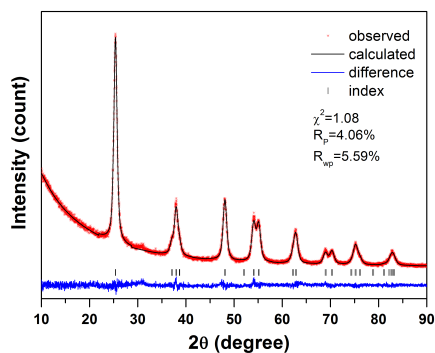


Fig. S1 Rietveld refinement results obtained from the room temperature XRD data for Cr, N-codoped TiO<sub>2</sub> mesoporous microspheres.

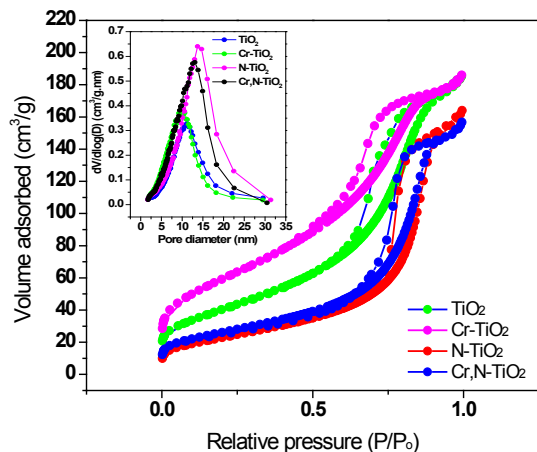


Figure S2. Nitrogen adsorption and desorption isotherm (inset: pore size distribution) of mesoporous N-doped and Cr,N-codoped TiO<sub>2</sub> microspheres.

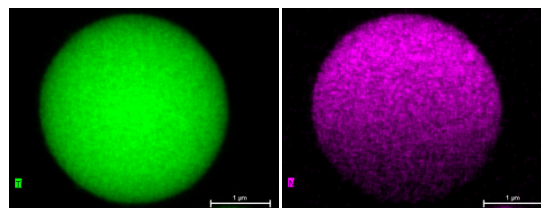
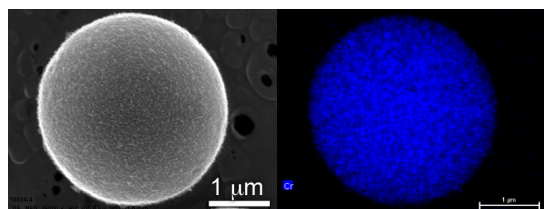


Figure S3. EDS map (Cr, N, and Ti) of Cr, N-codoped TiO<sub>2</sub> microspheres.

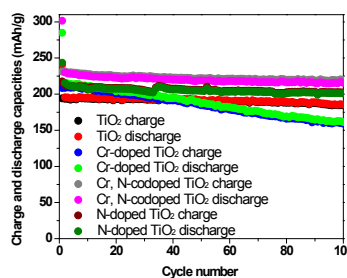


Figure S4. Cyclic performance at a rate of 0.2 C of pure, Cr-doped, N-doped and Cr, N-codoped TiO<sub>2</sub> microsphere electrodes.

Table S1. Cell parameters for doped and undoped TiO<sub>2</sub> mesoporous microspheres.

	a(Å)	b(Å)	c(Å)	Vol(Å <sup>3</sup> )
TiO <sub>2</sub>	3.7863(2)	3.7863(2)	9.5183(4)	136.45(2)
N-TiO <sub>2</sub>	3.7904(3)	3.7904(3)	9.4968(9)	136.44(3)
Cr-TiO <sub>2</sub>	3.7905(2)	3.7905(2)	9.4946(7)	136.41(2)
Cr, N-TiO <sub>2</sub>	3.7906(3)	3.7906(3)	9.4993(8)	136.49(2)