

Electronic Supplementary Information

MG-IPA sample:

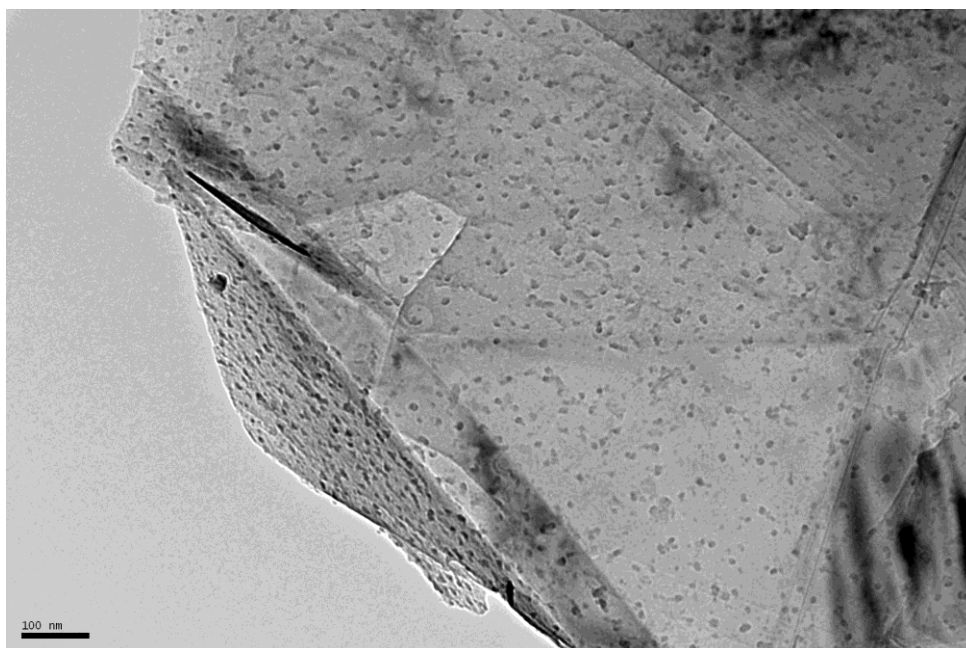


Fig. S1. TEM of MG-IPA sample.

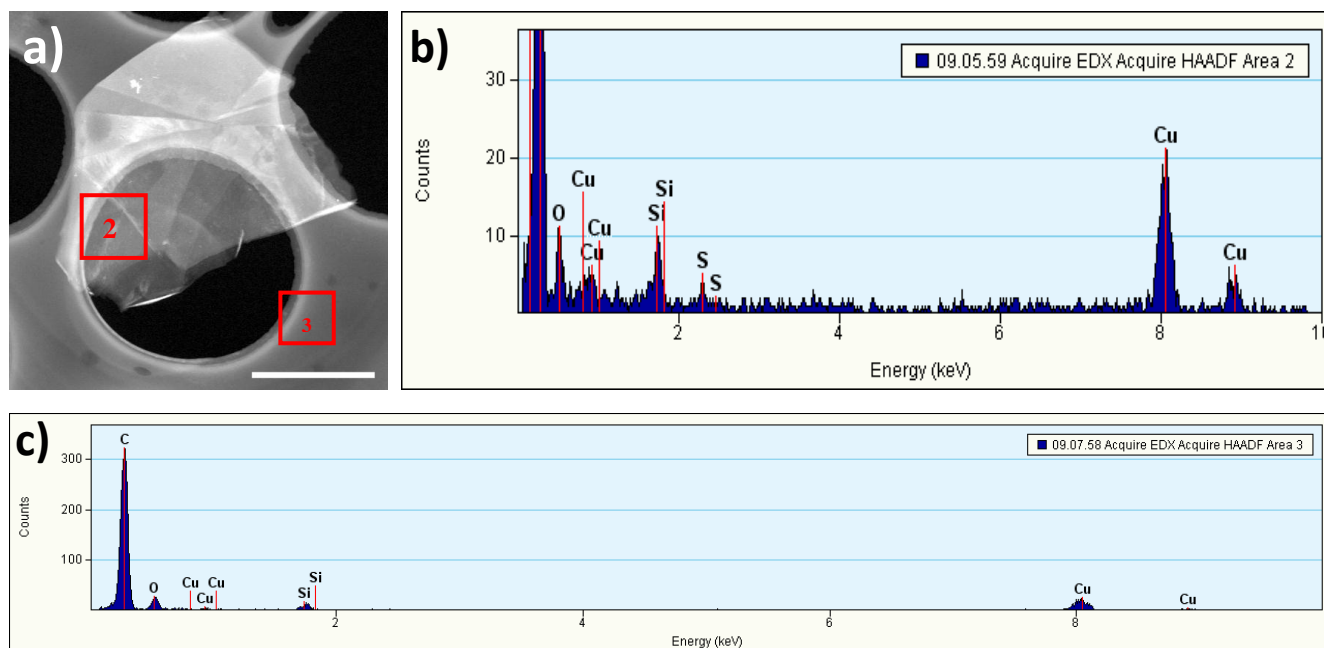


Fig. S2. EDX analysis of MG-IPA sample: Image a) is the TEM image of MG-IPA sample, the white bar is 2 μ m; Image b) is the element analysis of selected rectangular red area of MG-IPA, which is denoted as No.2; Image c) is the element analysis of selected rectangular red area of TEM grid, which is denoted as No.3.

MG-HNO₃ sample:

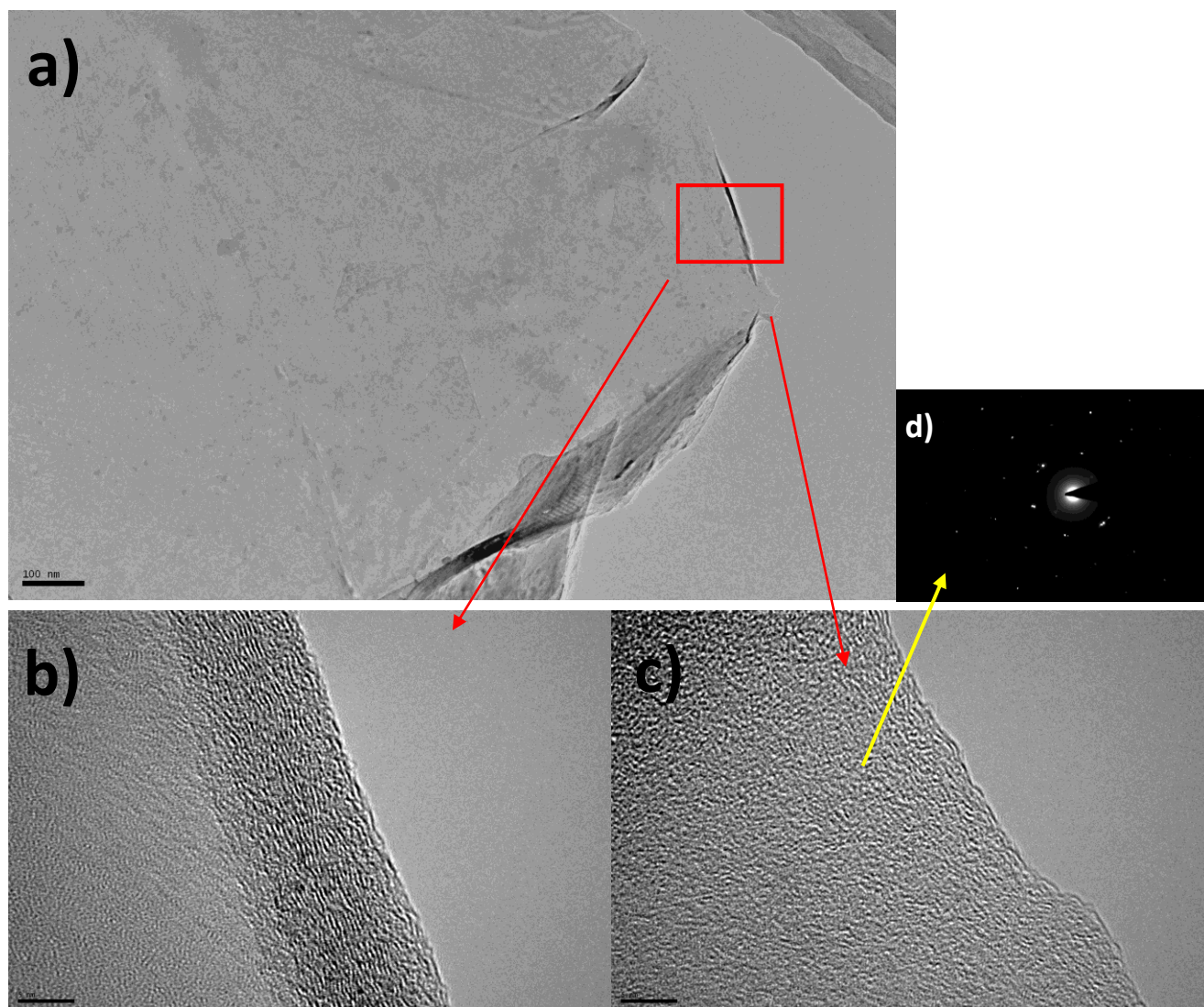


Fig. S3 TEM of MG-HNO₃ sample (a-c) and the electron diffraction pattern of the graphene edge (d).
The black bar of image b and c is 5 nm.

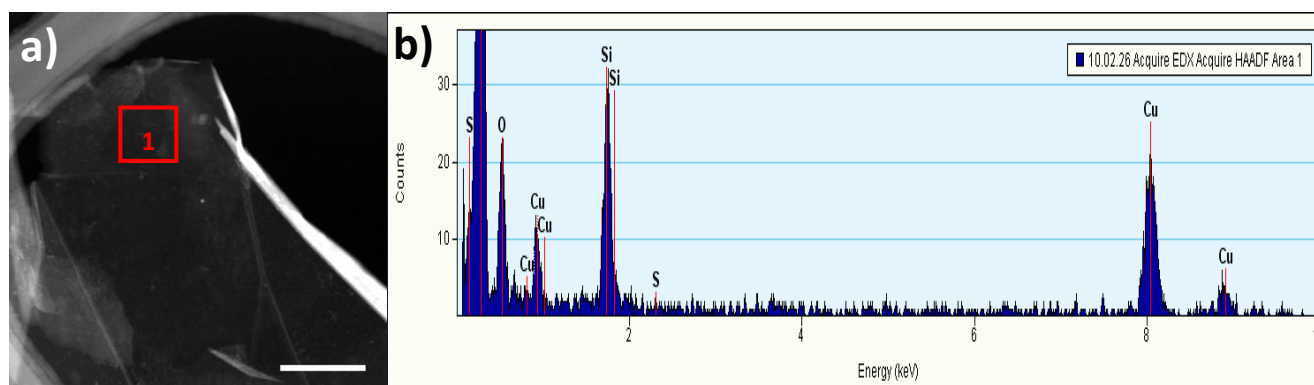


Fig. S4. EDX analysis of MG-HNO₃ sample: Image a) is the TEM image of MG-HNO₃ sample, the white bar is 500 nm; Image b) is the element analysis of selected rectangular red area of MG-HNO₃.

Carbon nanotube (CNT) sample

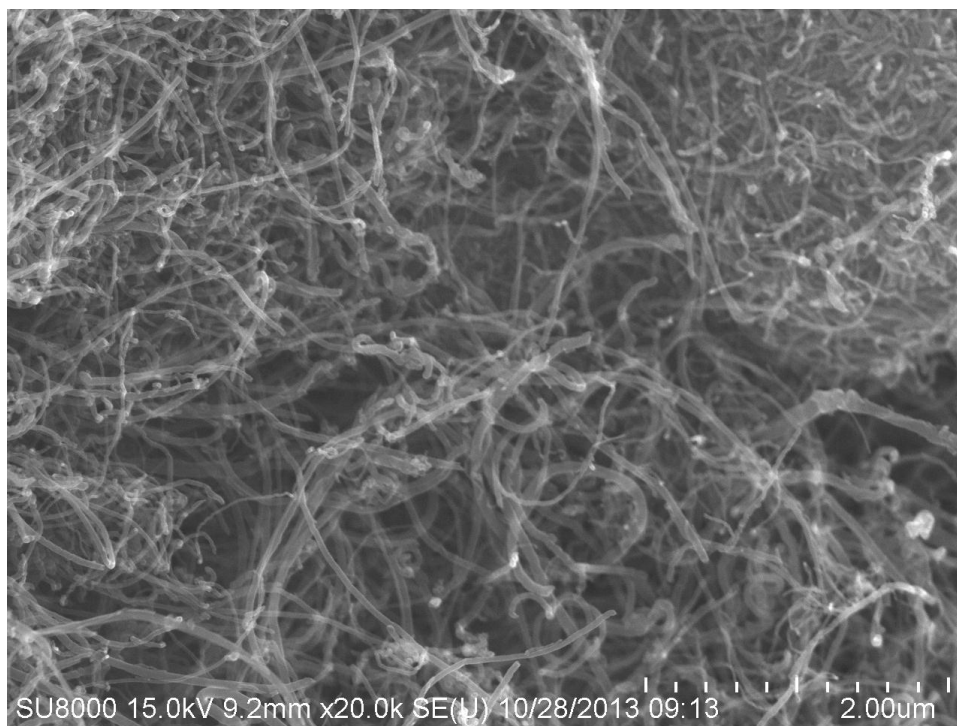


Fig. S5 SEM of CNT sample