

Supporting Information

The Enhanced electrochemical performances of $\text{Li}_3\text{V}_2(\text{PO}_4)_3/\text{Ag}$ +grapheme composites as cathode materials for Li-ion batteries

Mansoo Choi^{a,b}, Hyun-Soo Kim^a, Young Moo Lee^b, and Bong-Soo Jin^{a*}

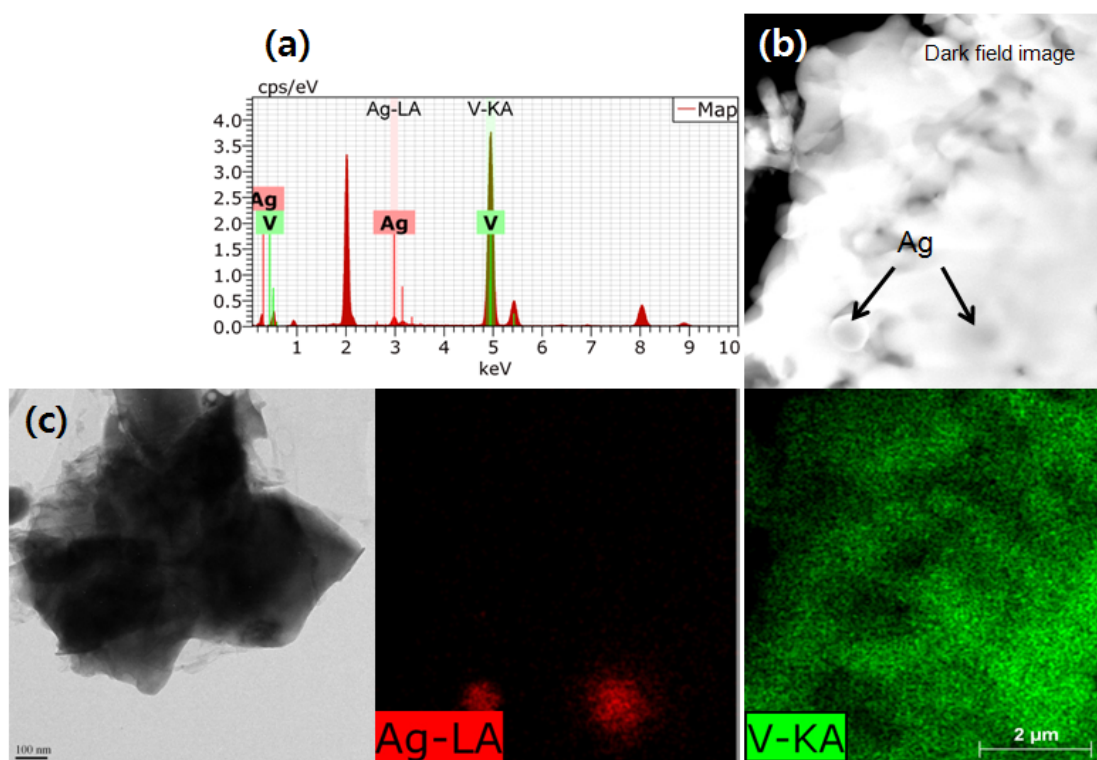


Figure S1. EDS spectrum of LVP/Ag (a), dark-field (DF) image(b), TEM image of LVP/Ag+G and elemental mapping images of LVP/Ag composite and the elemental distributions

Fig. S1 showed the dark field image and the corresponding elemental mapping images of V and Ag. The image revealed that Ag particles are embedded in the LVP composite

