

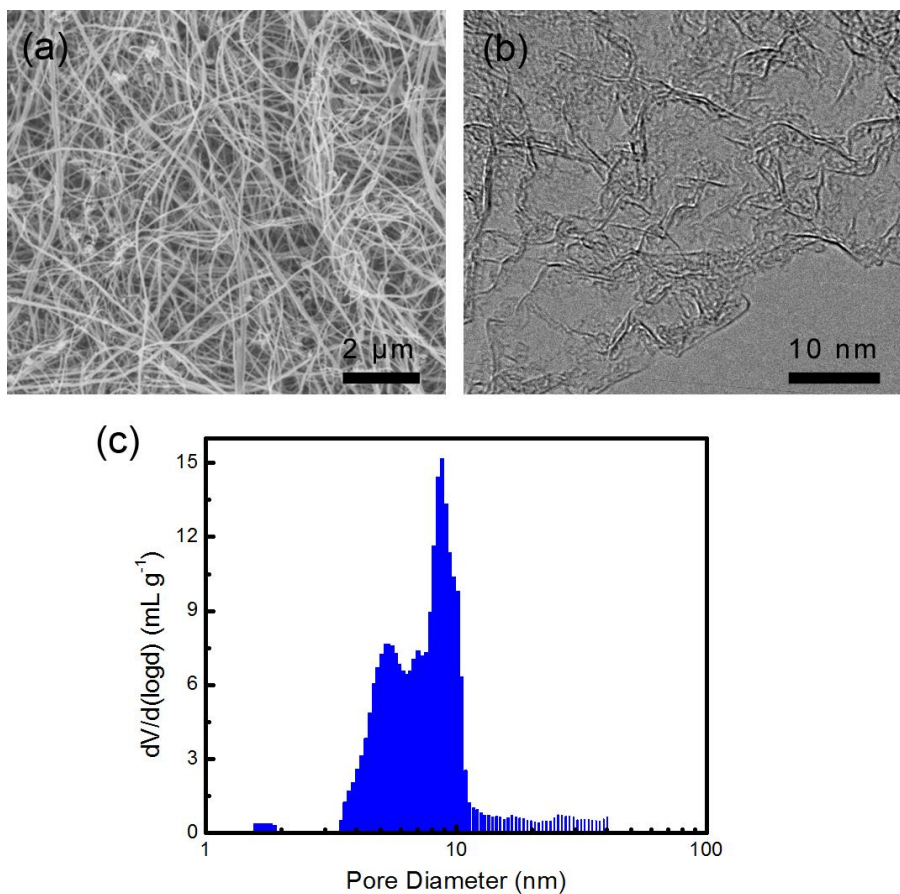
## Electronic Supplementary Information for

### Flexible all-carbon interlinked nanoarchitectures as cathode scaffolds for high-rate lithium-sulfur batteries

*Jia-Qi Huang, Hong-Jie Peng, Xin-Yan Liu, Jing-Qi Nie, Xin-Bing Cheng,*

*Qiang Zhang, Fei Wei*

Beijing Key Laboratory of Green Chemical Reaction Engineering and Technology, Department of Chemical Engineering, Tsinghua University, Beijing 100084, China.



**Figure S1.** (a) SEM image of the dispersed long carbon nanotube building block; (b) TEM image of the carbon nanocage building block; (c) the pore distribution of the carbon nanocages.