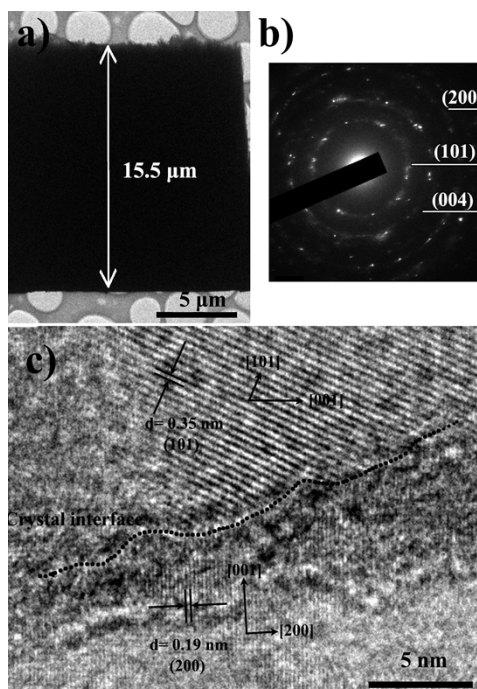


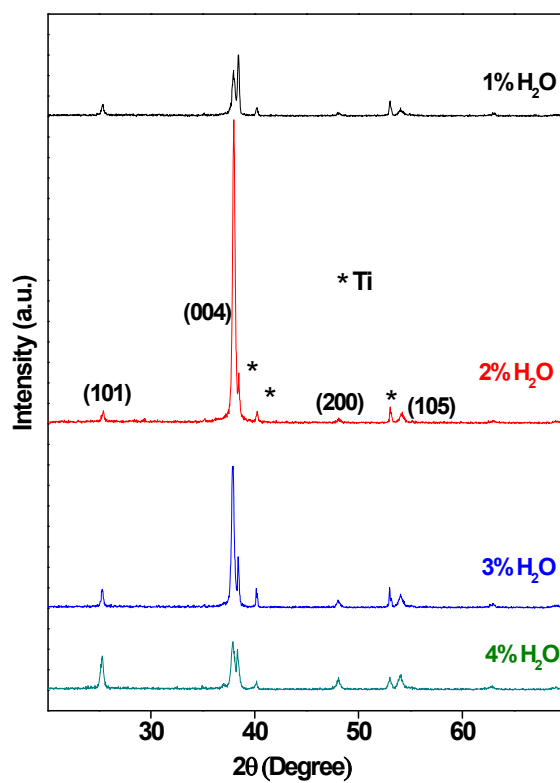
## Supporting Information

### **C-axis Preferentially Oriented and Fully Activated TiO<sub>2</sub> Nanotube Arrays for Lithium Ion Batteries and Supercapacitors**

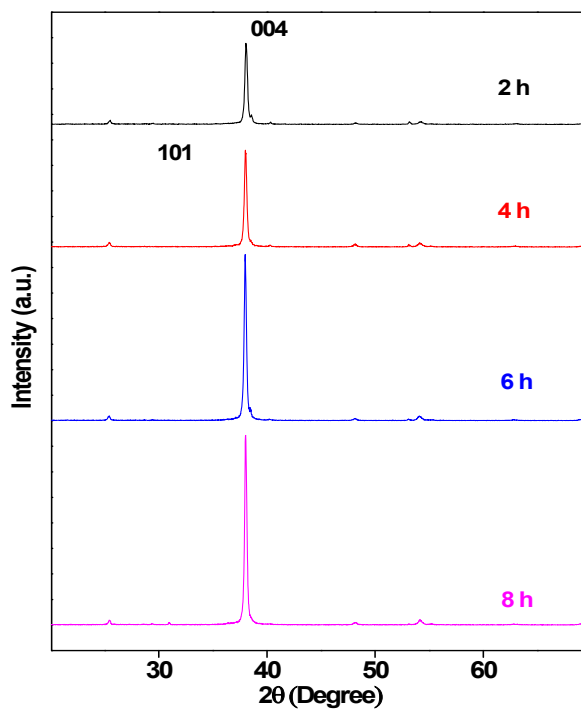
*Dengyu Pan\**, *He Huang*, *Xueyuan Wang*, *Liang Wang*, *Haobo Liao*, *Zhen Li\**, and  
*Minghong Wu\**



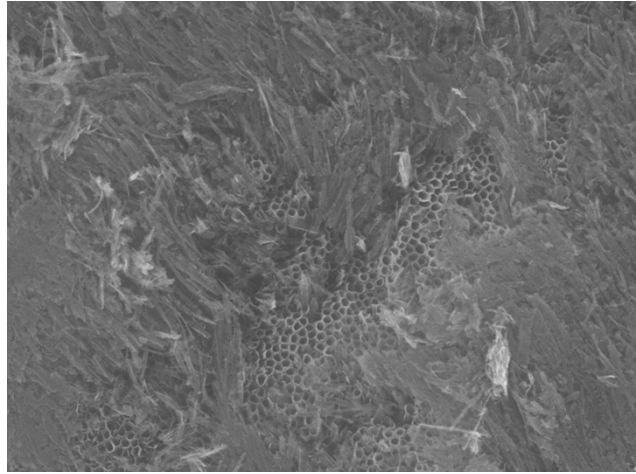
**Figure S1.** TEM image (a), SAED pattern (b), and HRTEM image (c) of air-annealed titanium dioxide nanotube arrays.



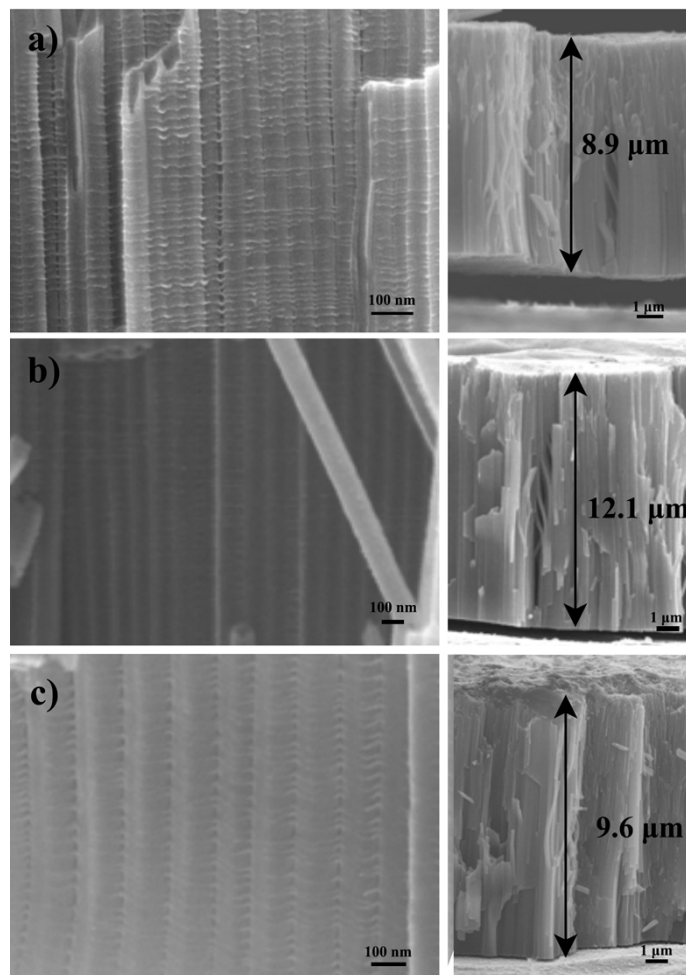
**Figure S2.** XRD patterns of titanium dioxide nanotube arrays prepared at different water contents and annealed in vacuum.



**Figure S3.** XRD patterns of titanium dioxide nanotube arrays prepared at a water content of 2 wt % for different anodization times and annealed in vacuum.



**Figure S4.** SEM image of titanium dioxide nanotube arrays prepared by 8 h anodization.



**Figure S5.** SEM images of titanium dioxide nanotube arrays prepared under different water contents: (a) 1 wt %, (b) 3 wt %, and (c) 4 wt %.