

Supporting information

A nanocomposite of tin dioxide octahedral nanocrystals exposed with high-energy facets anchored on graphene sheets for high performance lithium-ion batteries

Daoping Cai,^a Ting Yang,^b Bin Liu,^a Dandan Wang,^a Yuan Liu,^a Lingling Wang,^a Qihong Li^a and Taihong Wang^{a,b*}

^a Pen-Tung Sah Institute of Micro-Nano Science and Technology, Xiamen University, Xiamen 361000, China.

^b Key Laboratory for Micro-Nano Optoelectronic Devices of Ministry of Education and State Key Laboratory for Chemo/Biosensing and Chemometrics, Hunan University, Changsha, 410082, China.

*E-mail of the corresponding author: thwang@xmu.edu.cn

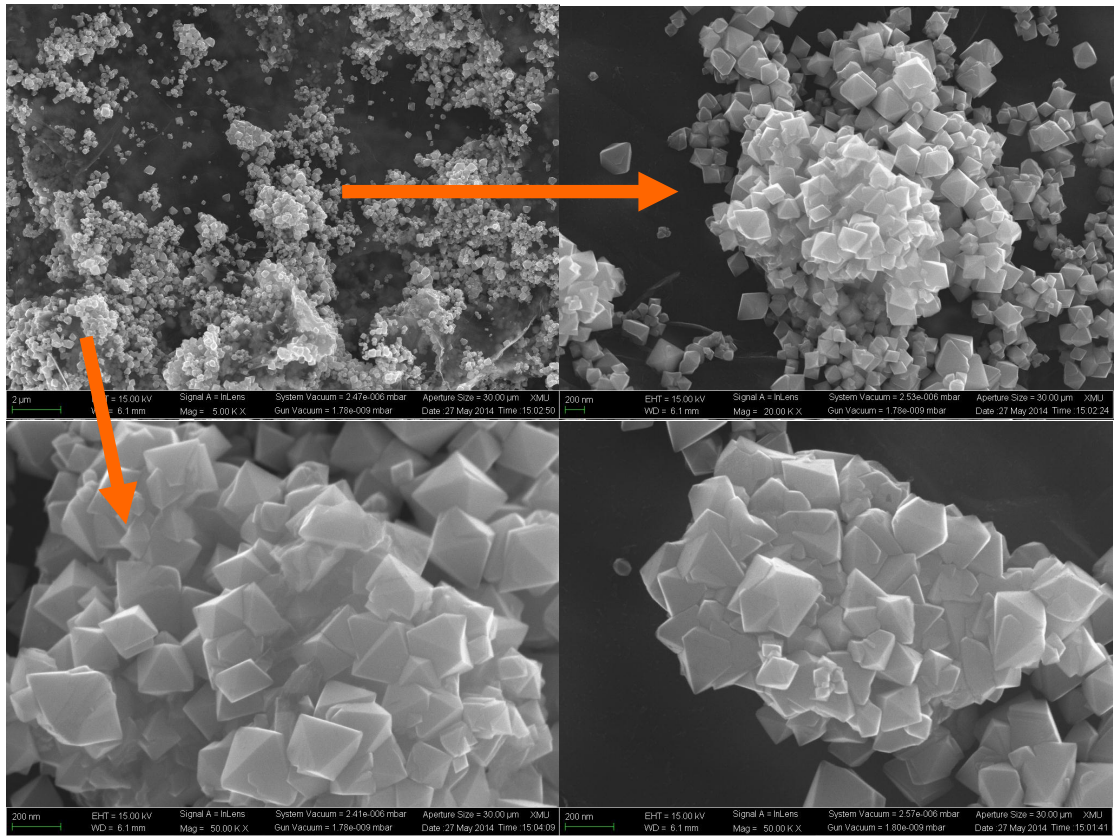


Figure S1. SEM images of the SnO₂/GS nanocomposite without the addition of PVP when the amount of HCl is 0.4 mL

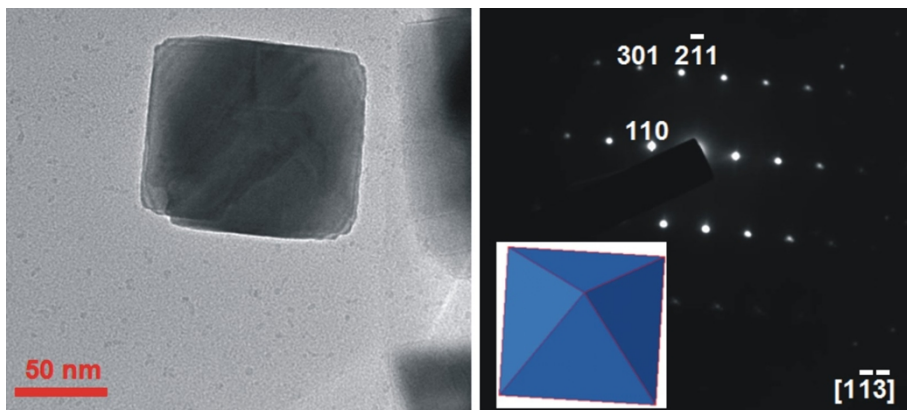


Figure S2. TEM image of a SnO₂ ONC viewed along the [1-1-3] direction and the corresponding SAED pattern (inset the SnO₂ ONC enclosed by {332} facets projected along the same direction).