

SUPPLEMENTARY INFORMATION

In situ coating of nitrogen-doped graphene-like nanosheets on silicon as stable anode for high-performance lithium-ion battery

Hongwei Mi,^{a,b} Yongliang Li,^a Peiyang Zhu,^a Xiaoyan Chai,^a Lingna Sun,^a Haitao Zhuo,^a Qianling Zhang,^a Chuanxin He,^{*a} Jianhong Liu^{*a,b}

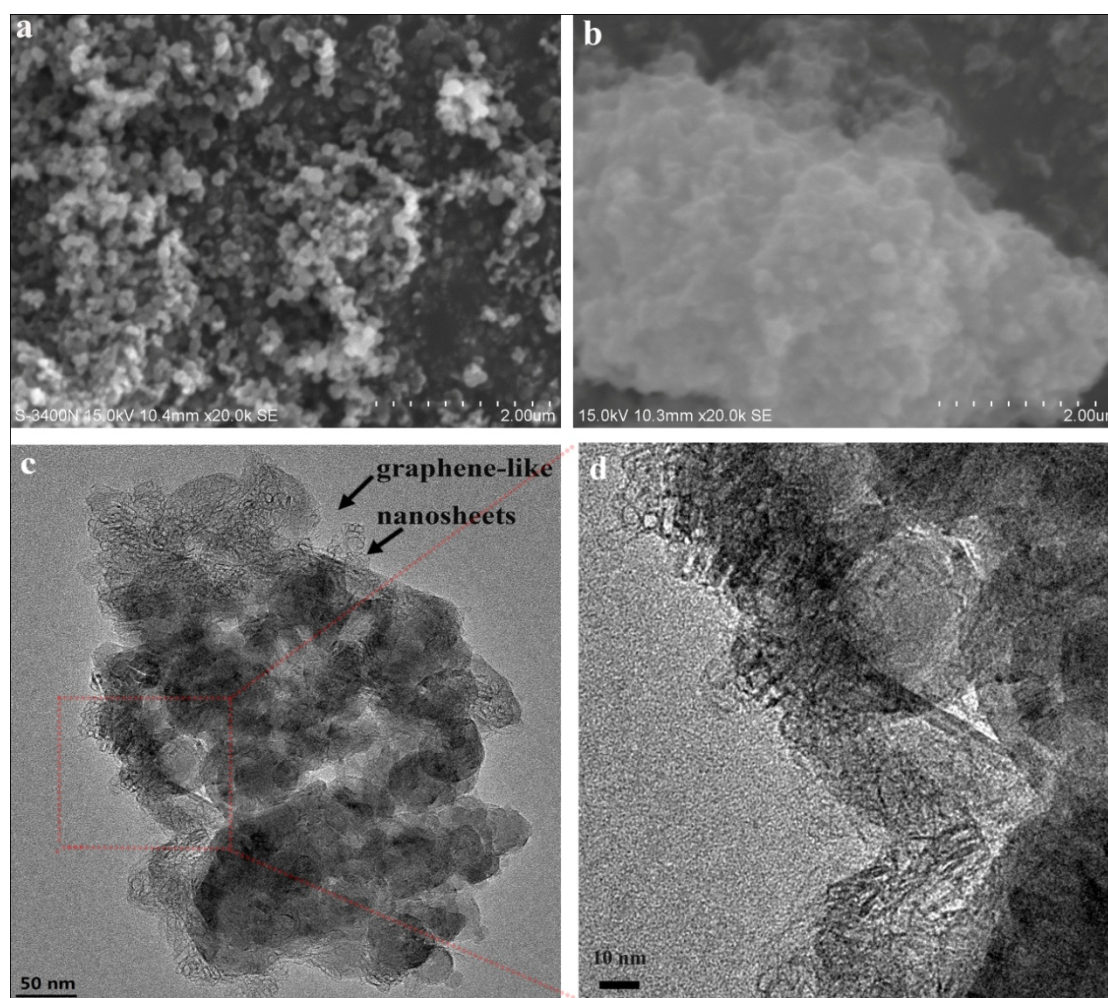


Fig. S1 SEM images of (a) Si, (b) G-29% Si composite and TEM images of (c),(d) G-29% Si composite.

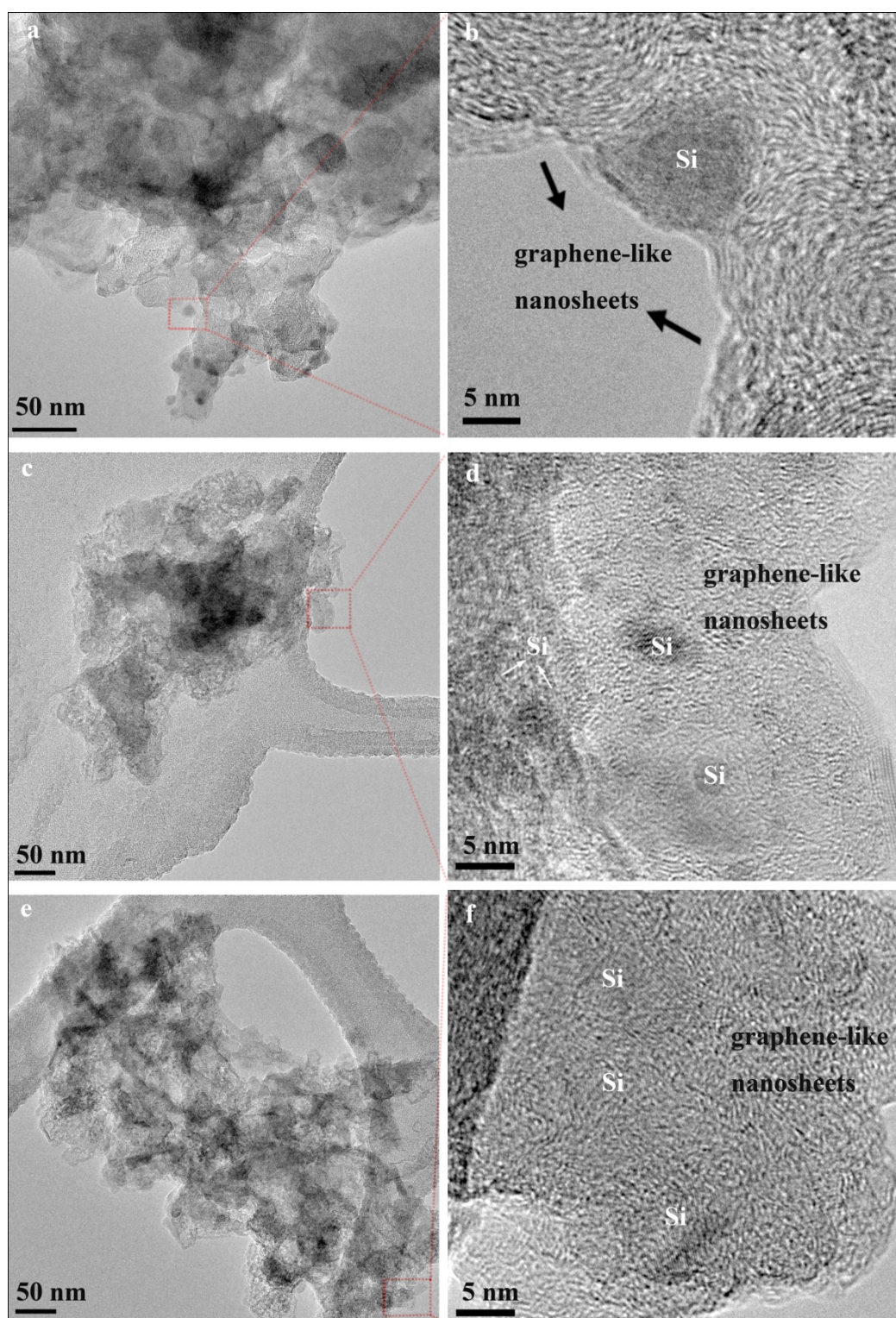


Fig. S2 TEM images of (a), (b) G-43% Si composite, (c), (d) G-29% Si composite and (e), (f) G-20% Si composite after 50 cycles.