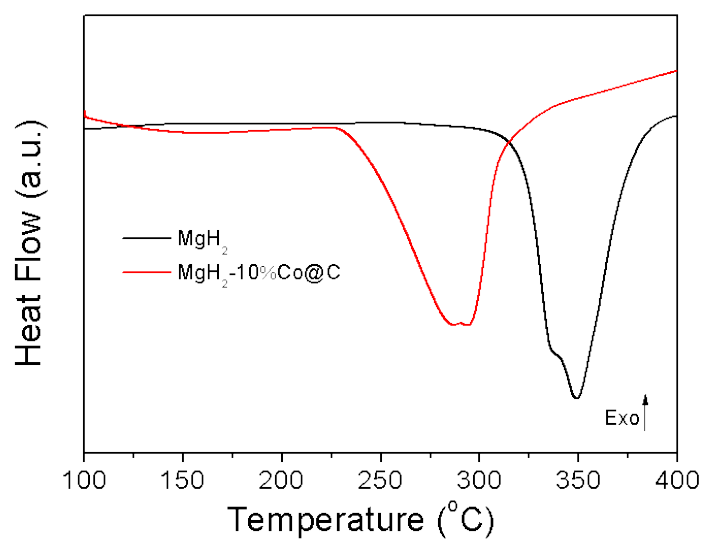


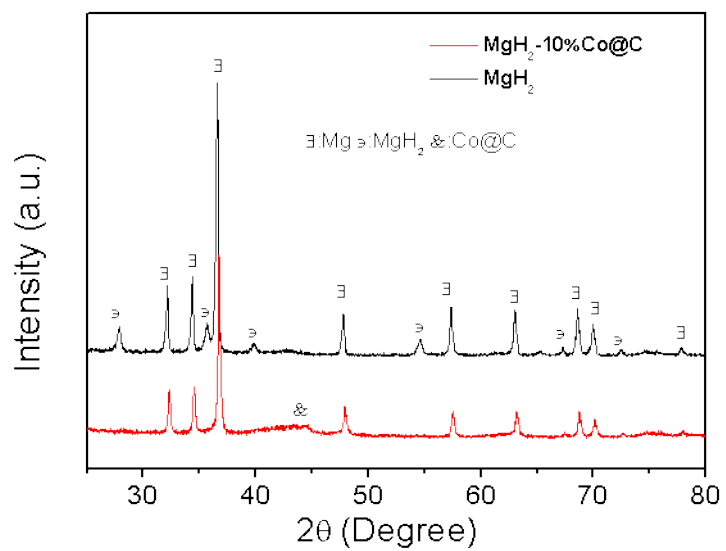
### Supporting Information



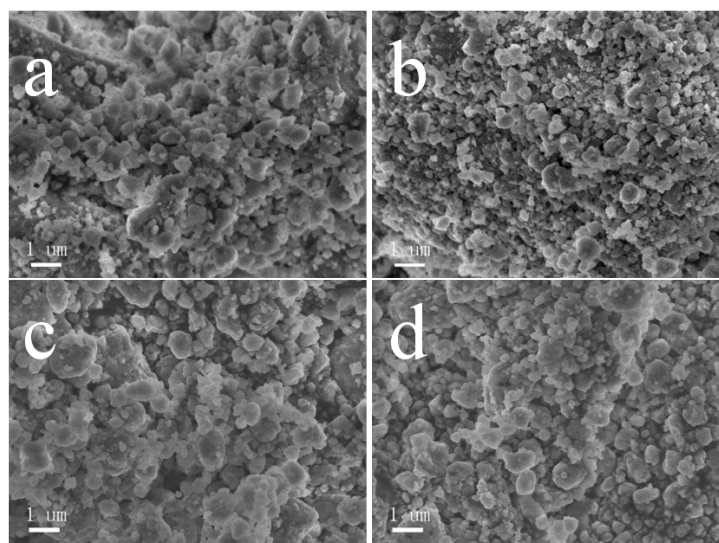
**Figure S1** The representative DSC curves of pure MgH<sub>2</sub> and MgH<sub>2</sub>-10%Co@C samples (Ramp: 5 °C min<sup>-1</sup>).

**Table S1** Peak temperature and  $E_a$  for desorption of pure  $MgH_2$  and  $MgH_2$ -10%Co@C samples.

<b>Sample Name</b>	<b>Peak Temperature (°C)</b>				<b><math>E_a</math> (kJ/mol)</b>
	2 (°C min <sup>-1</sup> )	5 (°C min <sup>-1</sup> )	10 (°C min <sup>-1</sup> )	15 (°C min <sup>-1</sup> )	
$MgH_2$	340.7	359.3	374.5	380.6	157.1
$MgH_2$ -10%Co@C	293.8	316.1	339.4	353.3	84.5



**Figure S2** XRD images of pure MgH<sub>2</sub> and MgH<sub>2</sub>-10%Co@C after dehydrogenation.



**Figure S3** SEM images of pure  $\text{MgH}_2$  and  $\text{MgH}_2$ -10%Co@C composites (a, b) as-milled, (c, d) after-dehydrogenated.