

Electronic Supplementary Information (ESI)

Ultra-fast synthesis and thermoelectric properties of Te doped skutterudites

**Tao Liang,^a Xianli Su,^a Yonggao Yan,^a Gang Zheng,^a Qiang Zhang,^a
Hang Chi,^b Xinfeng Tang,^{* a} and Ctirad Uher^b**

^aState Key Laboratory of Advanced Technology for Materials Synthesis and Processing, Wuhan University of Technology, Wuhan 43007, China

Email: tangxf@whut.edu.cn

^bDepartment of Physics, University of Michigan, Ann Arbor, Michigan 48109, USA

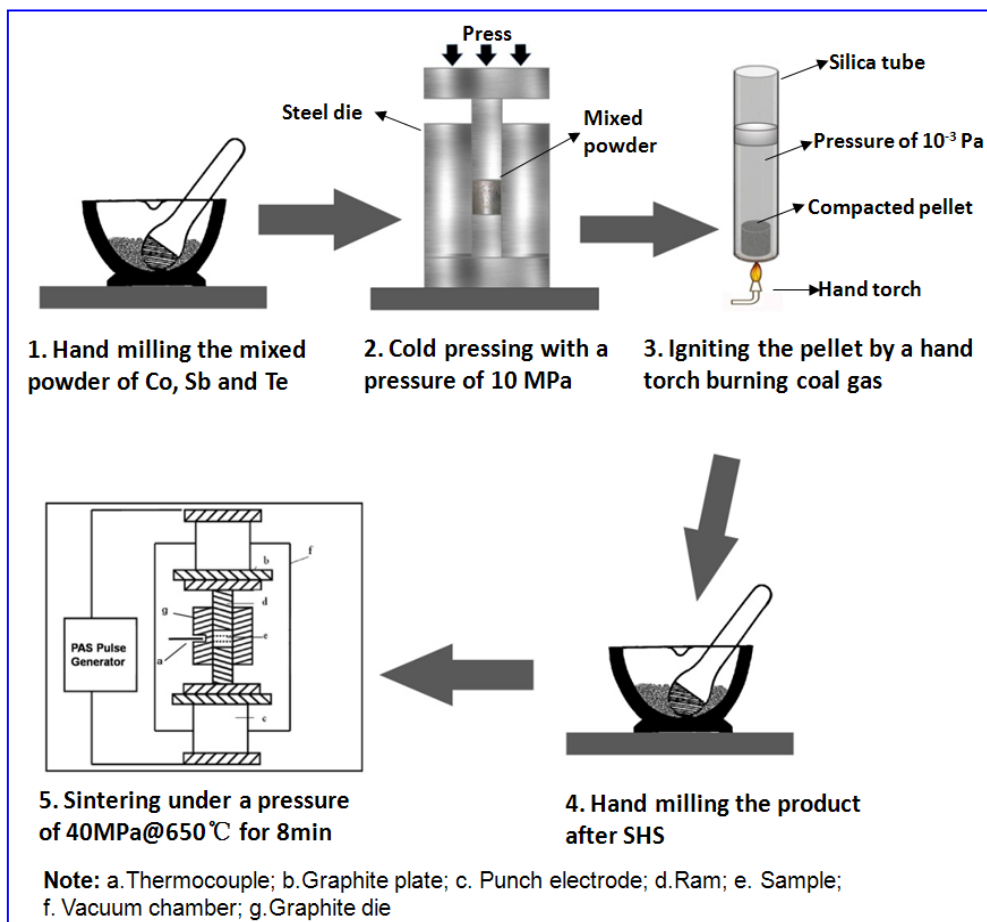


Fig. S1. Sketch of the specimen synthetic processing

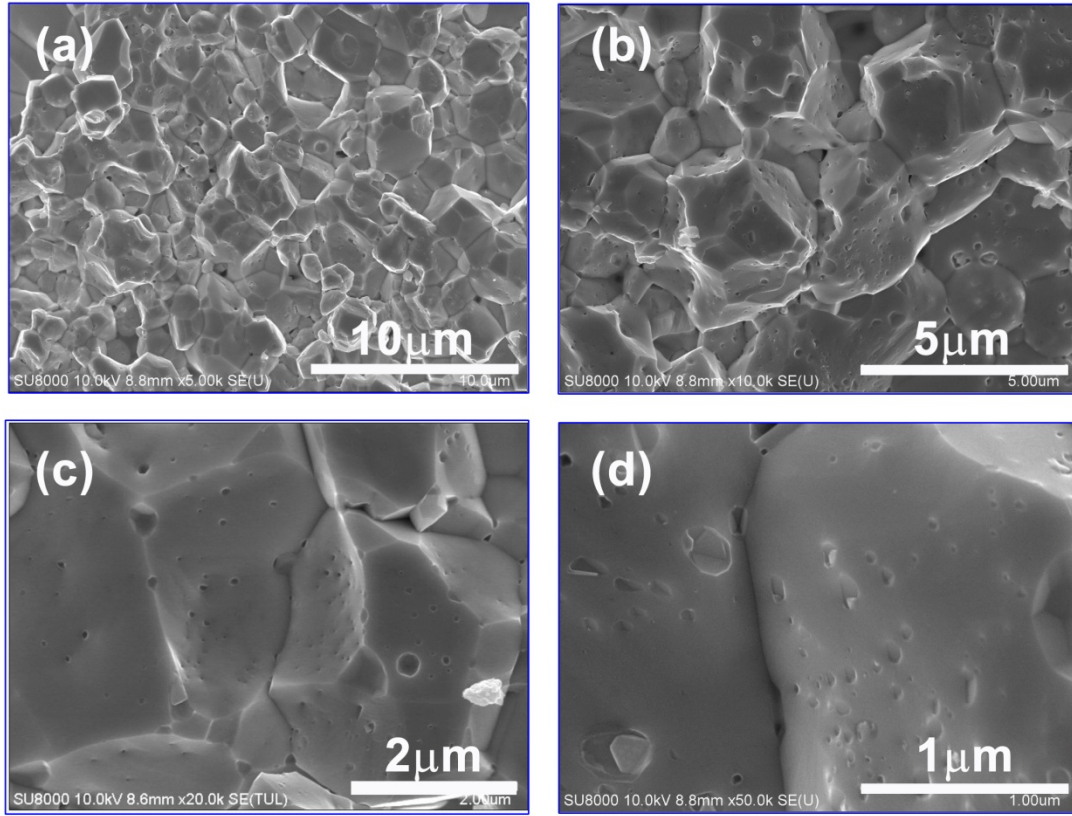


Fig. S2. FESEM image of the bulk $\text{CoSb}_{2.85}\text{Te}_{0.15}$ compound after SHS-PAS processing, the magnification of image (a), (b), (c), (d) is 5 k, 10 k, 20 k, 50 k, respectively.