

Supplementary information for

## In-situ polyaniline modified cathode material $\text{Li}[\text{Li}_{0.2}\text{Mn}_{0.54}\text{Ni}_{0.13}\text{Co}_{0.13}]\text{O}_2$ with high rate capacity for lithium ion batteries

Qingrui Xue, Jianling Li,\* Guofeng Xu, Hongwei Zhou, Xindong Wang, Feiyu. Kang

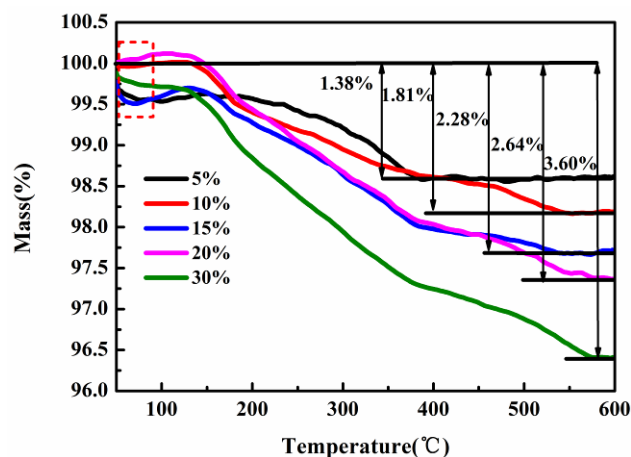


Fig. S1 Thermogravimetric curves of the prepared samples.

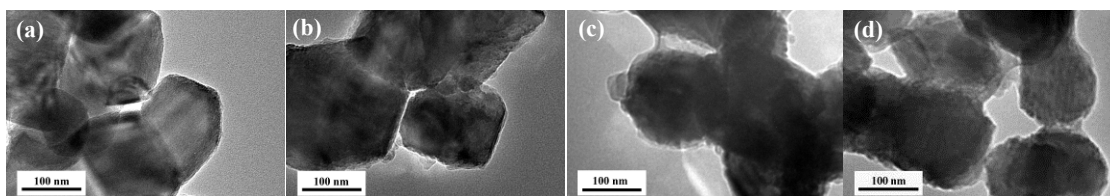


Fig. S2 TEM images of (a) PI1, (b) PI3, (c) PI4, (d) PI5.

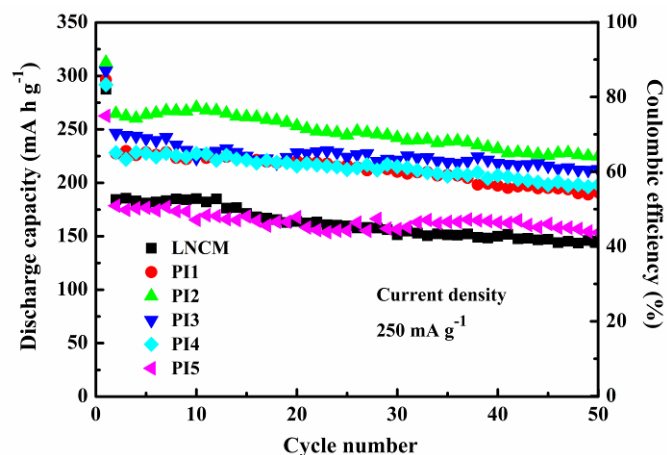


Fig. S3 Cycling performance and coulombic efficiency of the pristine LNCM and PANI-LNCM at the current density of 250 mA g<sup>-1</sup>.