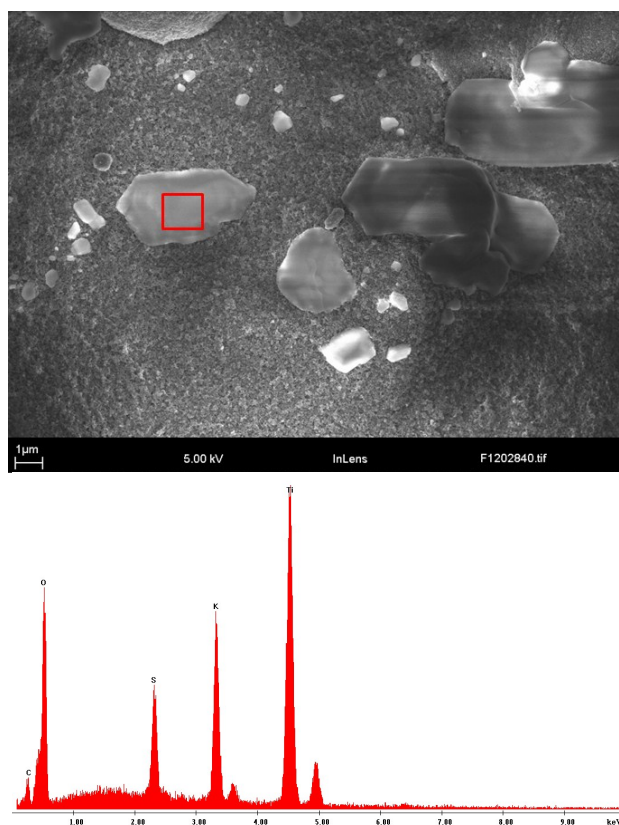
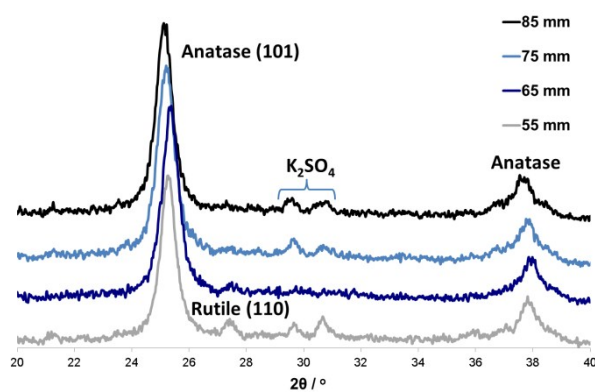


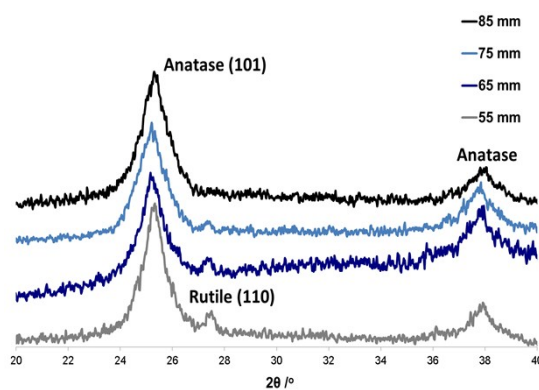
Additional Information



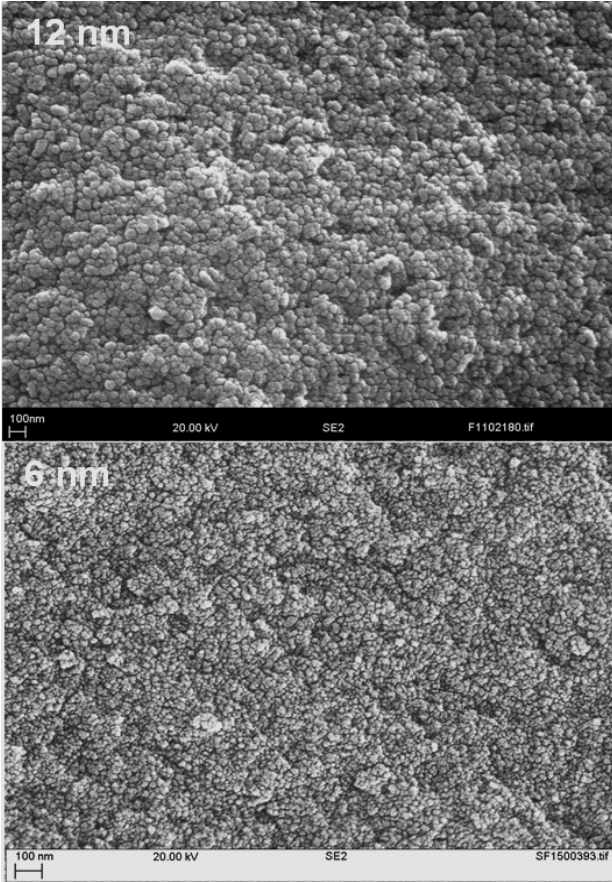
An SEM image of potassium sulphate impurity within a titania coating with associated EDX data.



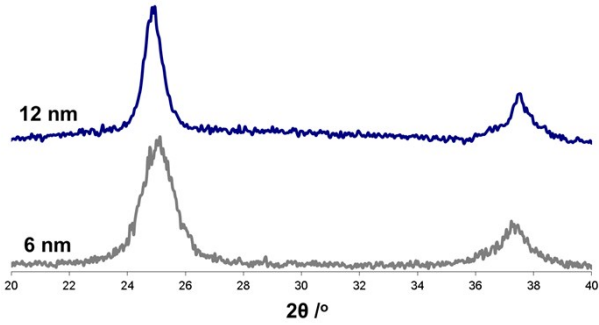
XRD patterns of 12 nm titania coatings produced at the four stand-off distances demonstrating the relative decrease in rutile (110) peak intensity. Also visible is a potassium sulphate impurity.



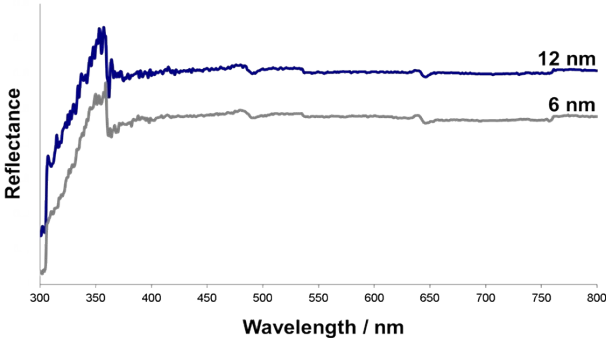
XRD patterns of 6 nm titania coatings produced at the four stand-off distances demonstrating the relative decrease in rutile (110) peak intensity.



SEM images showing the 12 nm and 6 nm feedstock



XRD patterns for the 6 and 12 nm feedstock materials.



UV-Vis spectra for 6 and 12 nm feedstock materials.