

Electronic Supplementary Information (ESI) for

**Fe@C core-shell and Fe@C yolk-shell particles for effective  
removal of 4-chlorophenol**

**Xiang Li, Fangyuan Gai, Buyuan Guan, Ye Zhang, Yunling Liu and Qisheng Huo\***

*State Key Laboratory of Inorganic Synthesis and Preparative Chemistry, College of Chemistry,  
Jilin University, Changchun 130012, People's Republic of China.  
E-mail: huqisheng@jlu.edu.cn; Fax: +86-431-85168624; Tel: +86-431-85168602*

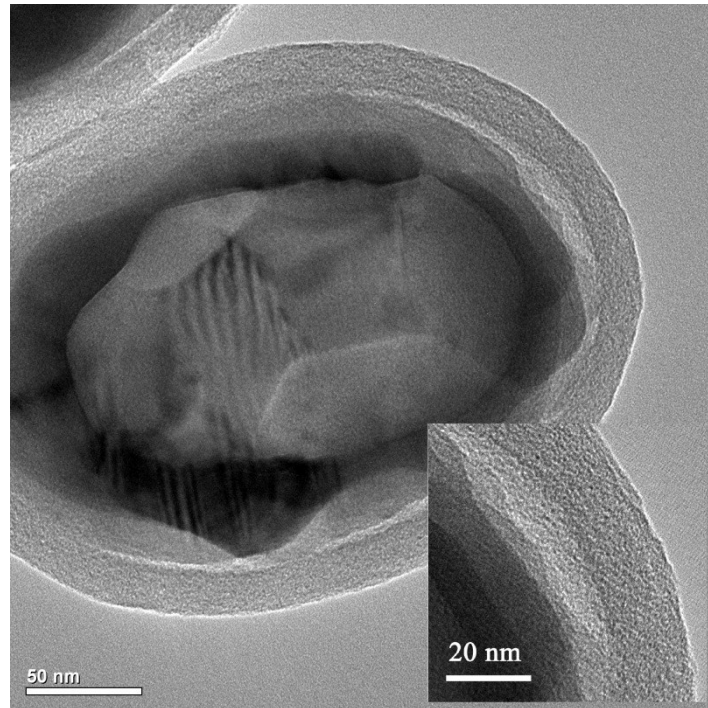


Fig. S1 HRTEM image of Fe@C yolk-shell particle

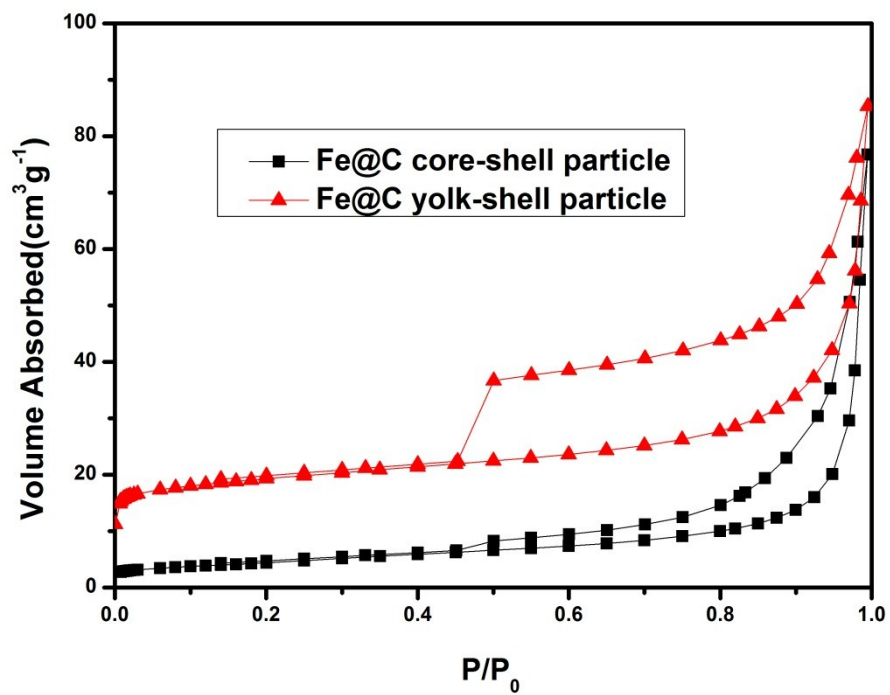
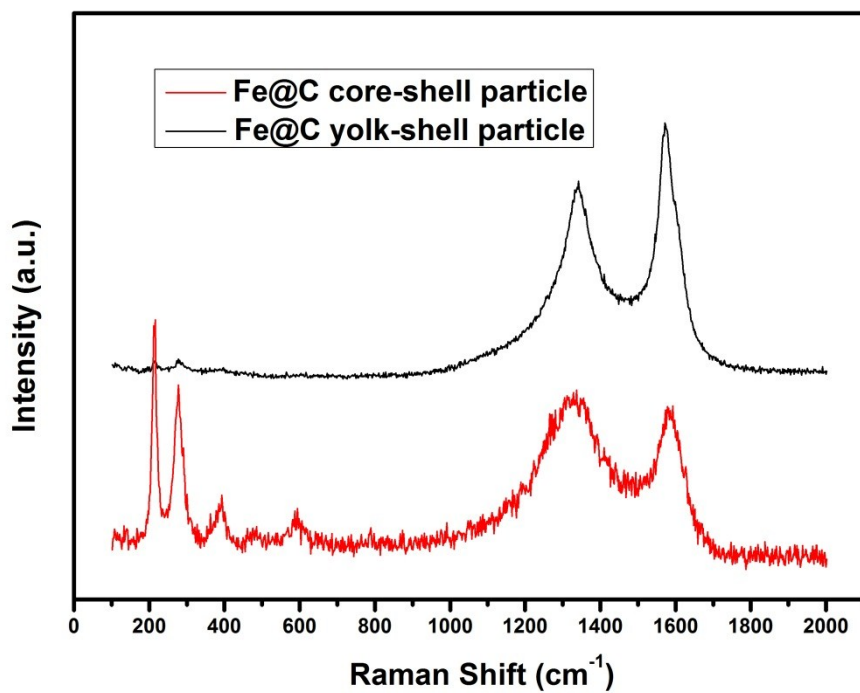
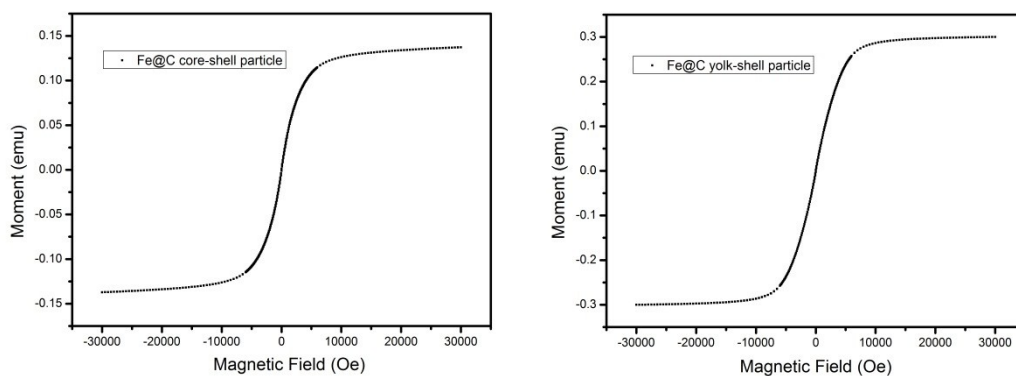


Fig. S2 Nitrogen adsorption-desorption isotherms of Fe@C core-shell and Fe@C yolk-shell particles



**Fig. S3** Raman spectra of Fe@C core-shell and Fe@C yolk-shell particles



**Fig. S4** M-H curve for Fe@C core-shell and Fe@C yolk-shell particles at 300 K.