

Fig. S1. DLS intensity versus time curves of the MF sol-gel processes, with MF prepolymer concentration of 63 mg/ml (A), 21 mg/ml (B) and 16 mg/ml (C).

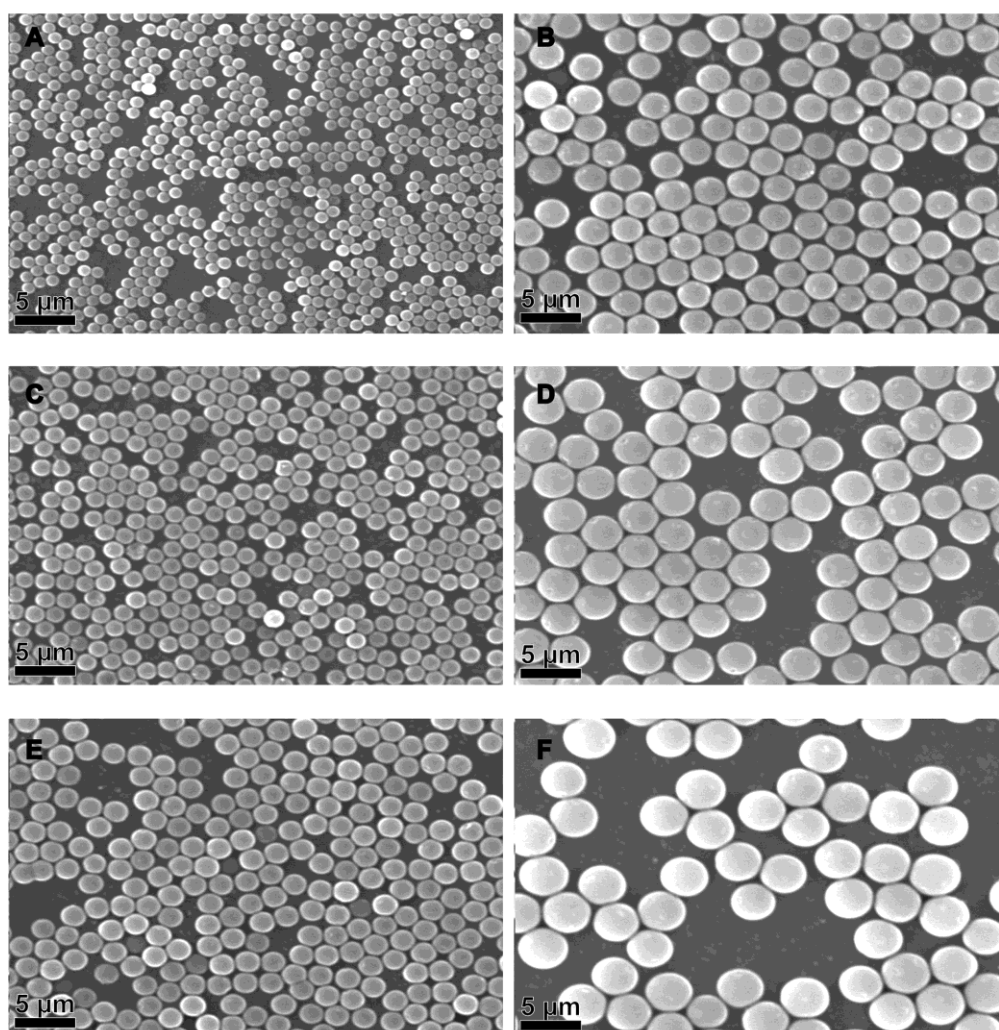


Fig. S2. A-F, SEM images of MF colloidal spheres with MF prepolymer concentration of 21, 25, 32, 50, 63 and 84 mg/ml.

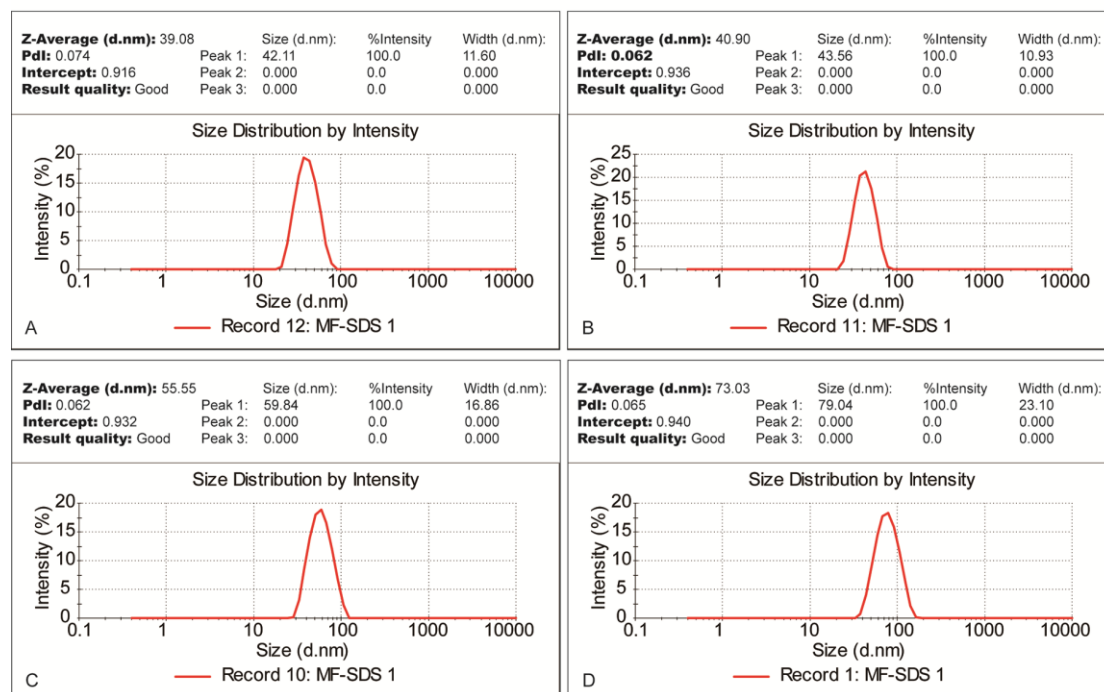


Fig.S3. Size distribution diagrams of the produced colloidal spheres with MF prepolymer concentration of 10.5 mg/ml and SDS concentration of 1.7, 1.8, 2.0, 2.2, 2.3, 2.5 and 2.7 mg/ml.