

Electronic supplementary information for “A reconstituted “two into one” thermosensitive hydrogel system assembled by drug-loaded amphiphilic copolymer nanoparticles for the local delivery of paclitaxel”

Weiwei Wang^a, Liandong Deng^a, Shuxin Xu^a, Xiumei Zhao^b, Nan Lv^b, Guixian Zhang^b, Na Gu^b, Renjie Hu^b, Jinjian Liu^c, Jianhua Zhang^a, Anjie Dong^{a*}

^a School of Chemical Engineering and Technology, Tianjin University, Tianjin, 300072, China.

^b Tianjin Institute of Medical and Pharmaceutical Science, Tianjin, 300020, China.

^c Institute of Radiation Medicine, Chinese Academy of Medical Science and Peking Union Medical College, Tianjin, 300192, China.

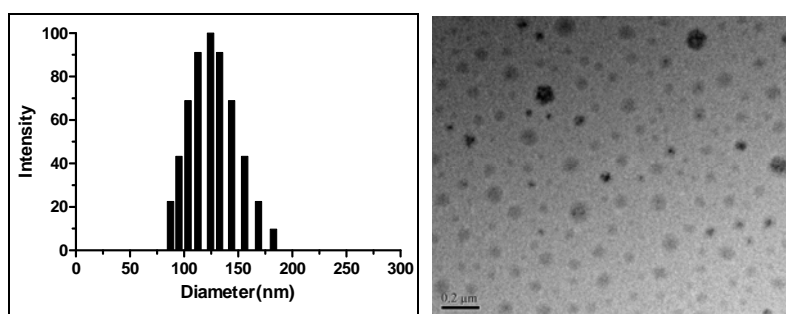


Fig. 1 The size and morphology of paclitaxel loaded PECT nanoparticles with a drug loading of 0.75%.

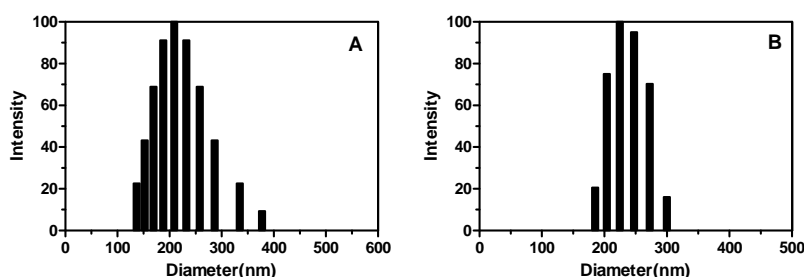


Fig. 2 The size of redispersed paclitaxel loaded PECT nanoparticles with a drug loading of 0.375% (A) and 0.75% (B).

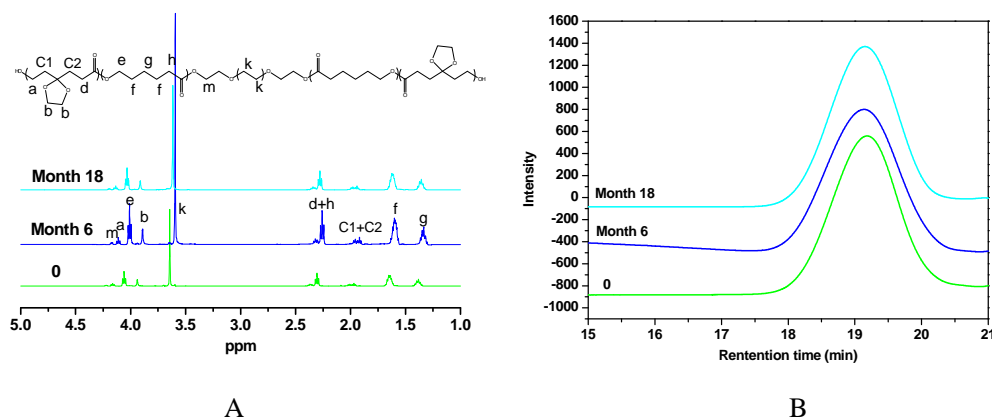
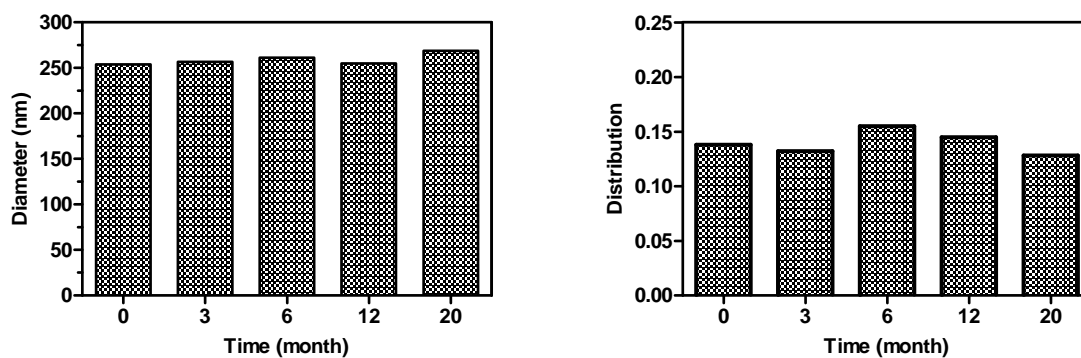
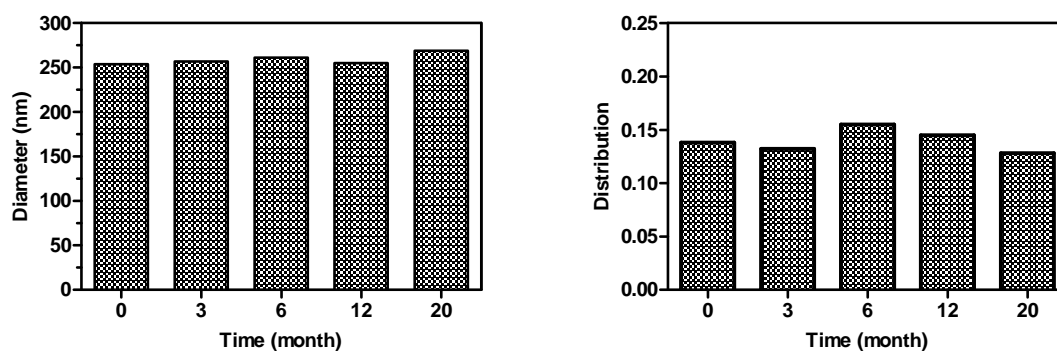


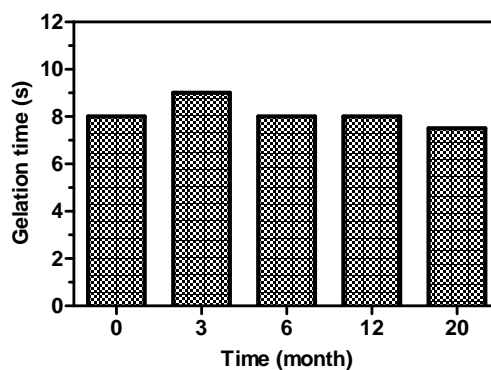
Fig. 3 The ¹H NMR spectrum (A) and GPC traces (B) of PECT freeze-dried powder stored at room temperature for different times.



A



B



C

Fig. 4 The size and size distribution of blank PECT nanoparticles (A), paclitaxel encapsulated PECT nanoparticles (B) (drug loading 2.3%) by redispersing corresponding freeze-dried powders in water, and the gelation time (C) of paclitaxel encapsulated PECT freeze-dried powders at 37 °C at different storage times.

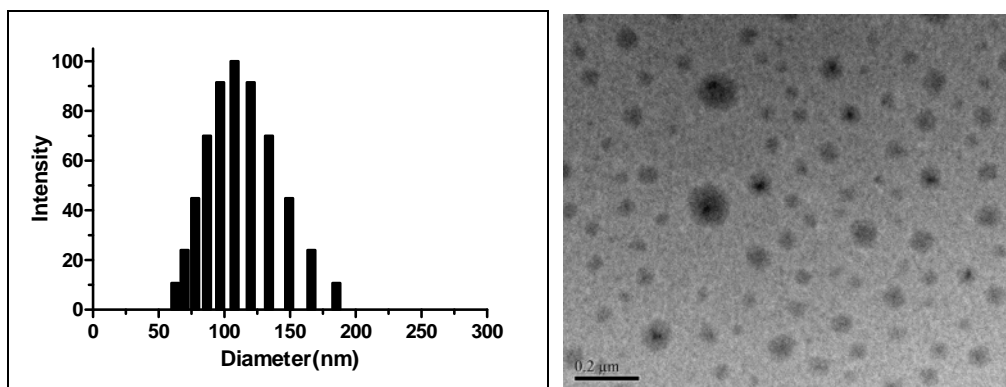


Fig. 5 The size and morphology of PTX/PECT NPs in PTX/PECT^{Gel} solution after dilution to the concentration of 0.5% (w/w).