

## Supplementary Information for

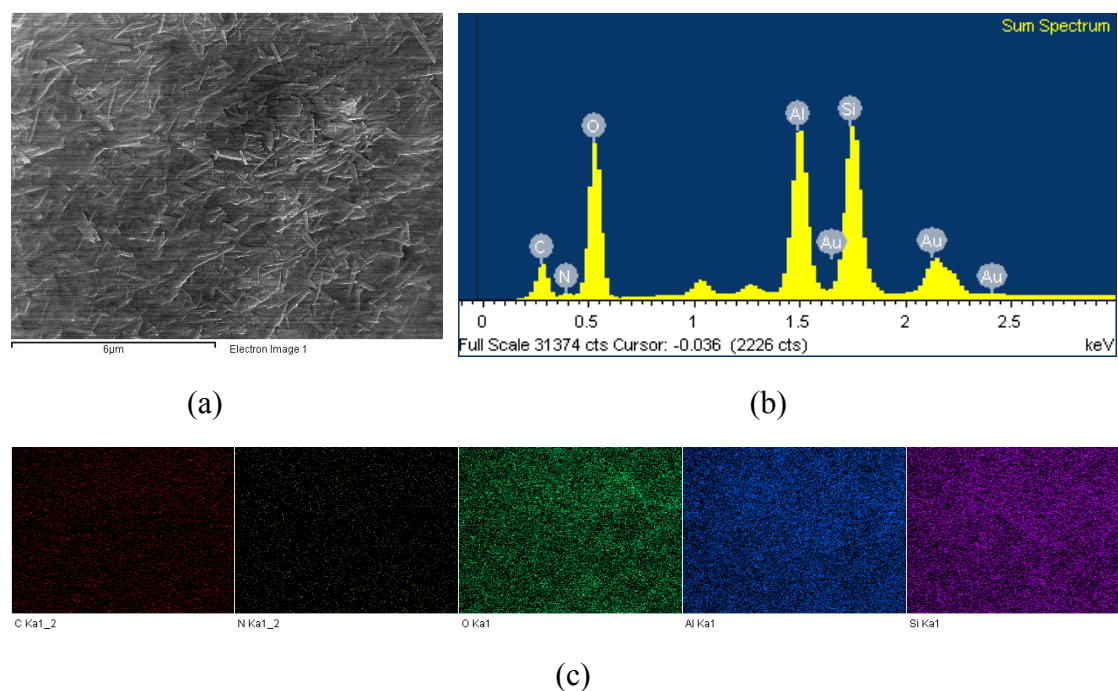
# Chitosan-Halloysite Nanotubes Nanocomposite Scaffolds for Tissue Engineering

Mingxian Liu<sup>a</sup>, Chongchao Wu<sup>b</sup>, Yanpeng Jiao<sup>a</sup>, Sheng Xiong<sup>b</sup>, Changren Zhou<sup>\*a</sup>

<sup>a</sup>Department of Materials Science and Engineering, Jinan University, Guangzhou 510632, China

<sup>b</sup>Biomedical R&D Center, Guangdong Provincial Key Laboratory of Bioengineering Medicine, National Engineering Research Center of Genetic Medicine, Jinan University, Guangzhou 510632, China

Fax: 86(20)-85223271 Email: [tcrz9@jnu.edu.cn](mailto:tcrz9@jnu.edu.cn)



**Figure S1.** SEM photo (a), EDX spectra (b), and element mapping of C, N, O, Al, and Si (c) of CS1N1 scaffold.

**Table S1.** X-ray EDS spectra data of CS1N1 scaffold.

Element	Weight %	Atomic %
C	19.93	29.14
N	5.25	6.57
O	46.21	50.70
Al	9.50	6.18
Si	10.64	6.65
Au	8.47	0.76
Totals	100.00	