

Supplementary Information

Silica Mineralisation of Chiral DNA Packing: Helicity Control and Formation Mechanism of Impeller-like Helical Architectures

Ben Liu, Lu Han, and Shunai Che*

¹⁰ B. Liu, L. Han and Prof. S. Che

School of Chemistry and Chemical Engineering

State Key Laboratory of Metal Matrix Composites

Key Laboratory for Thin Film and Micro-fabrication Technology of the Ministry of Education

Shanghai Jiao Tong University

¹⁵ 800 Dongchuan Road, Shanghai, 200240 (P.R. China)

Fax: (+86) 215-474-2852

E-mail: chesa@sjtu.edu.cn

Homepage: <http://che.sjtu.edu.cn>

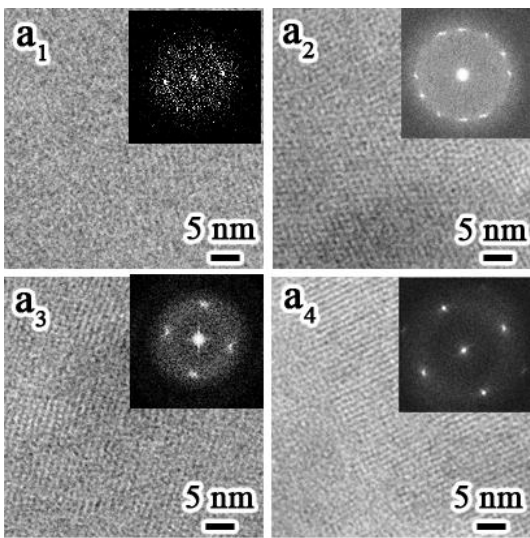


Fig. S1 TEM images and corresponding Fourier diffractograms of the IHDSCs shown in Fig. 4 synthesised at 25 °C. These images show the structural transformation from the initial $p6mm$ to the resulting $p4mm$ symmetry. The reaction times of the samples synthesised at 25 °C were 2 h (a_1), 3 h (a_2), 6 h (a_3) and 96 h (a_4).

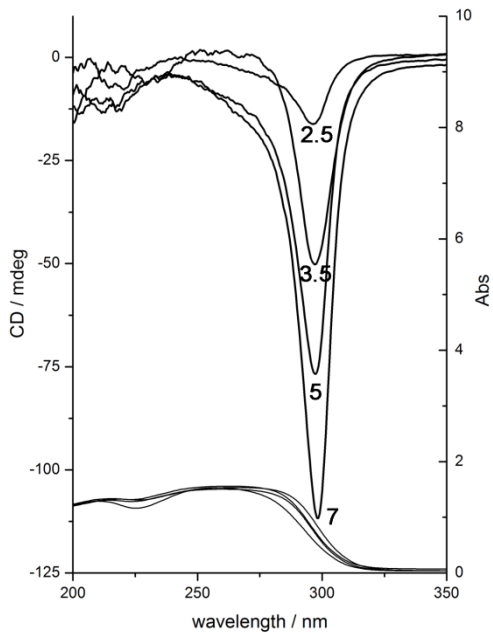


Fig. S2 DRCD and UV/Vis spectra of the as-made DSCs shown in Fig. 4.