

Supplement

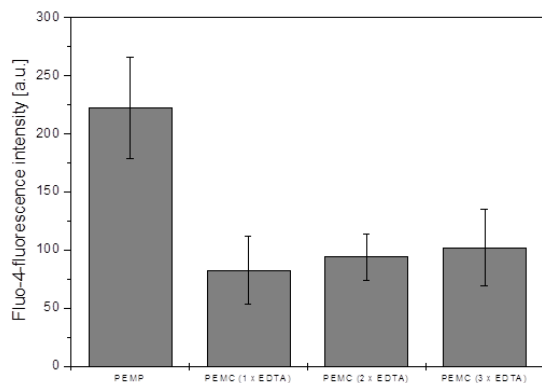


Fig.9 FCM detection of the remaining Ca ions within the capsules while processing the core dissolution. In contrast to figure 2, the number of EDTA incubation steps was increased and each step was followed by only one washing step. As can be seen, an increasing EDTA treatment does not necessarily result in better core dissolution.

10

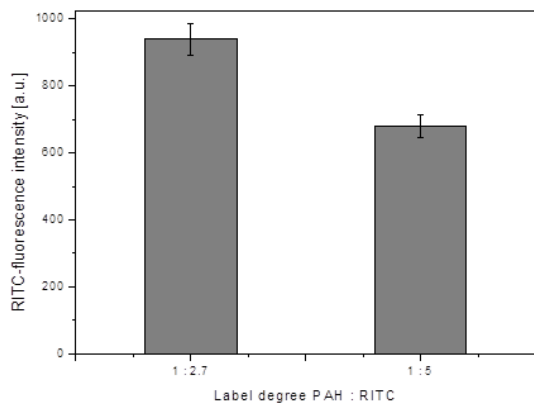


Fig. 10 FCM investigation of quenching effects caused by an increasing label degree of RITC:PAH. PAH-RITC and PSS were used as constituents of a SiO₂-multilayer following the scheme: SiO₂: PAH/PSS/PAH/PSS/PAH-RITC/PSS.

15