

Cite this: DOI: 10.1039/c0xx000000x

www.rsc.org/xxxxxx

ARTICLE TYPE

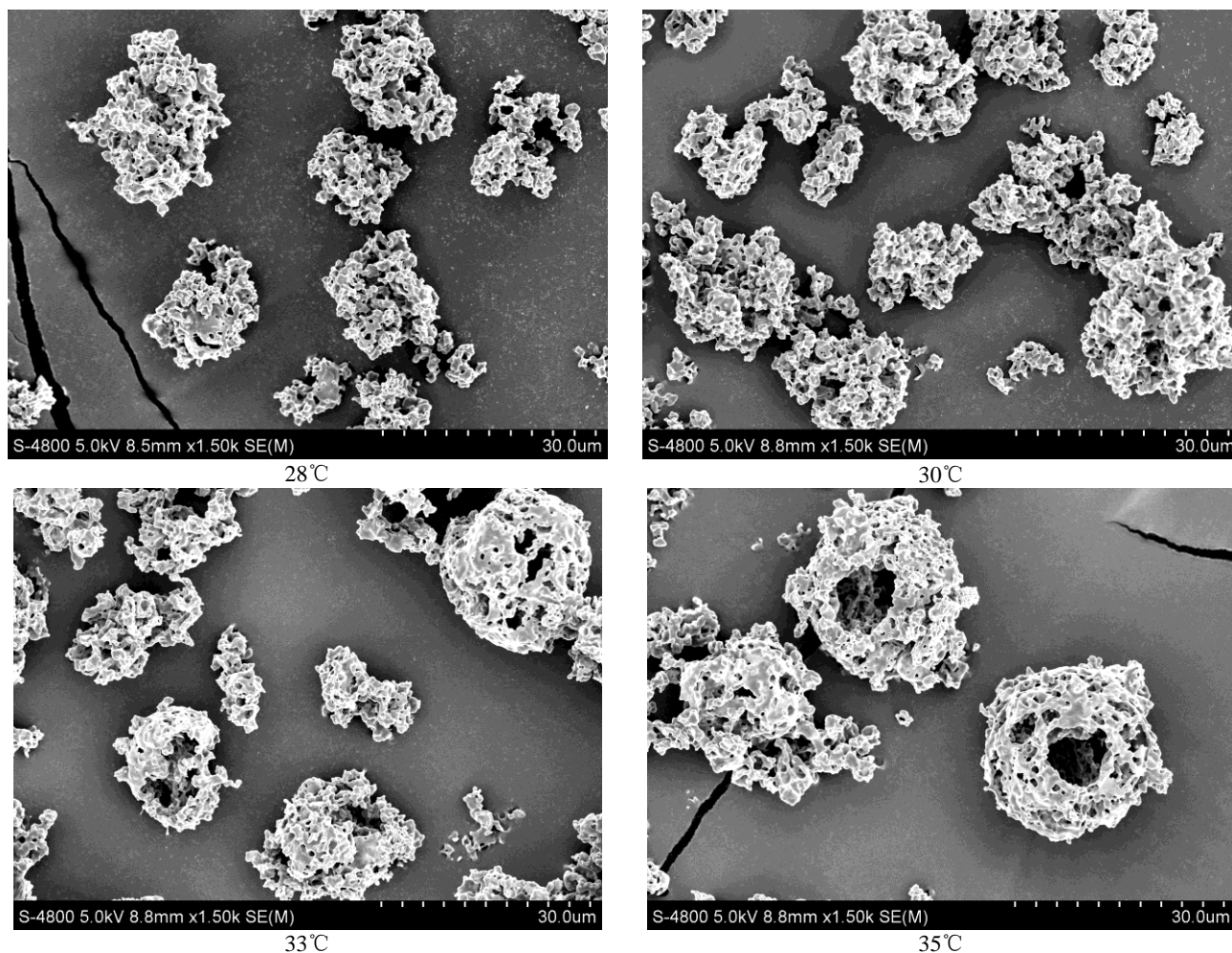
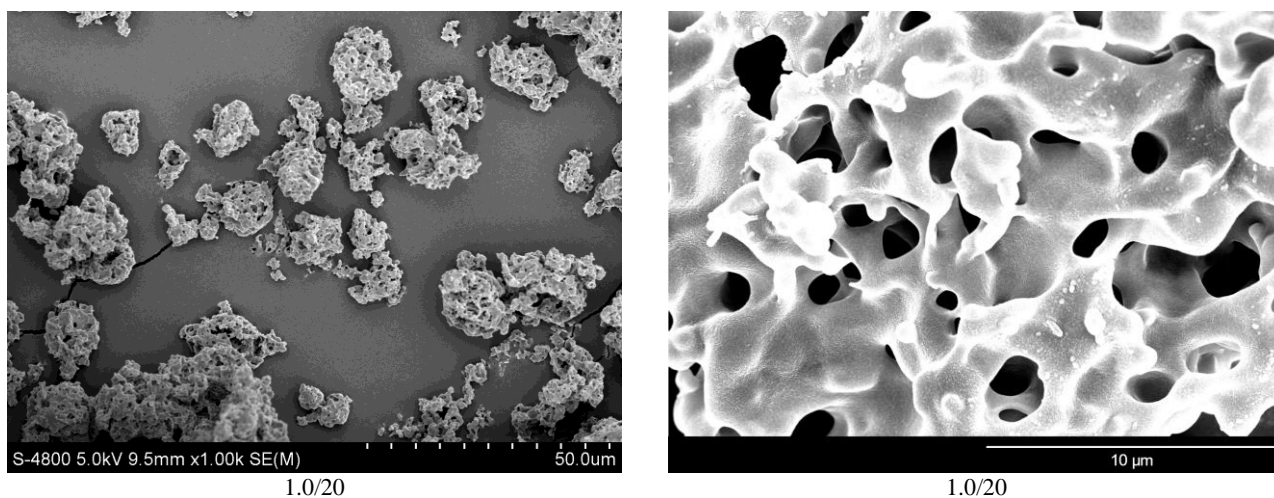
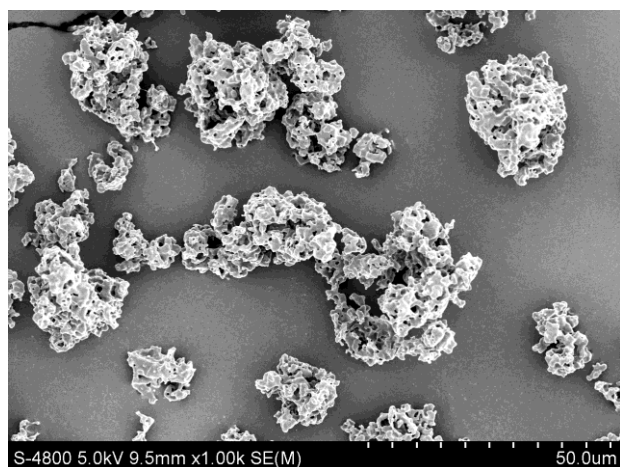


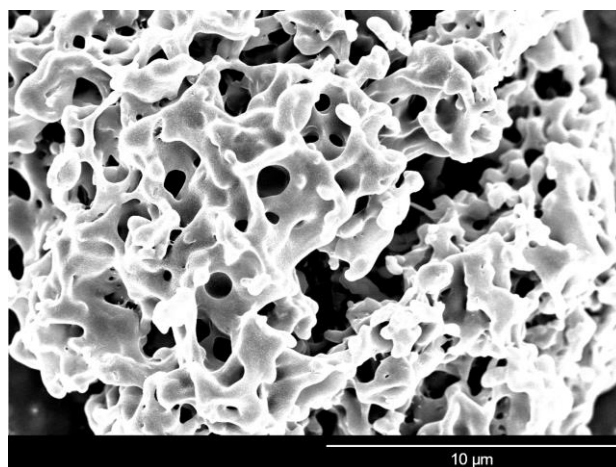
Fig. S1 SEM images of PLLA PMs prepared under different temperatures when the pressure was 8 MPa, W/O ratio was 1.80/20, emulsion flow rate was 4.0 mL min<sup>-1</sup>, CO<sub>2</sub> venting rate was 1200 L h<sup>-1</sup>, oil phase concentration was 2.3%.



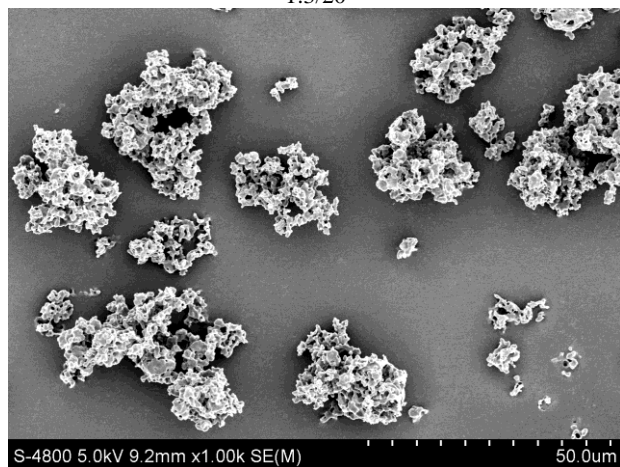




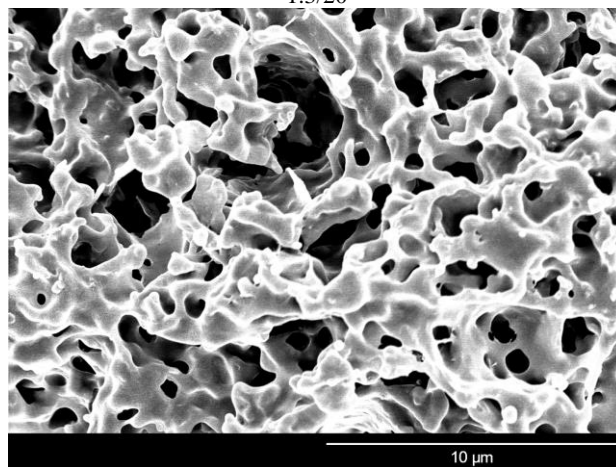
1.3/20



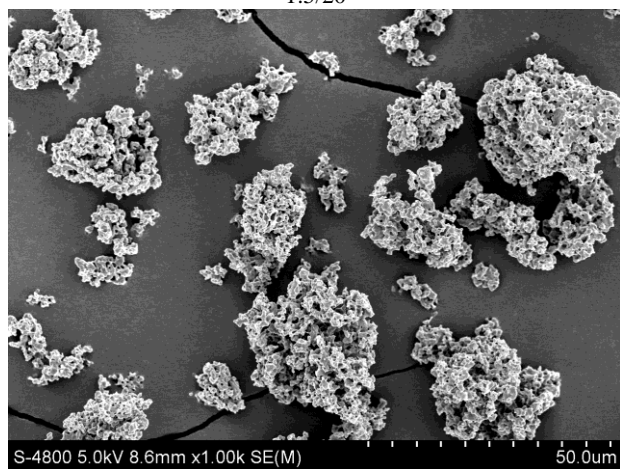
1.3/20



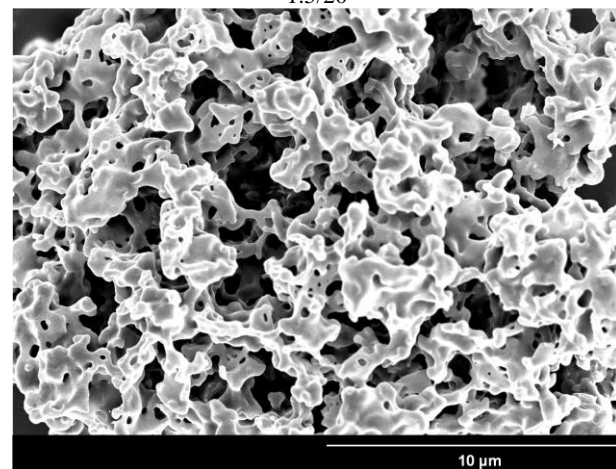
1.5/20



1.5/20



1.8/20



1.8/20

Fig. S2 SEM images of PLLA PMs and corresponding magnified porous structures prepared under different W/O ratios when the pressure was 8 MPa, temperature was 30 °C, emulsion flow rate was 4.0 mL min<sup>-1</sup>, CO<sub>2</sub> venting rate was 1200 L h<sup>-1</sup>, oil phase concentration was 2.3%.



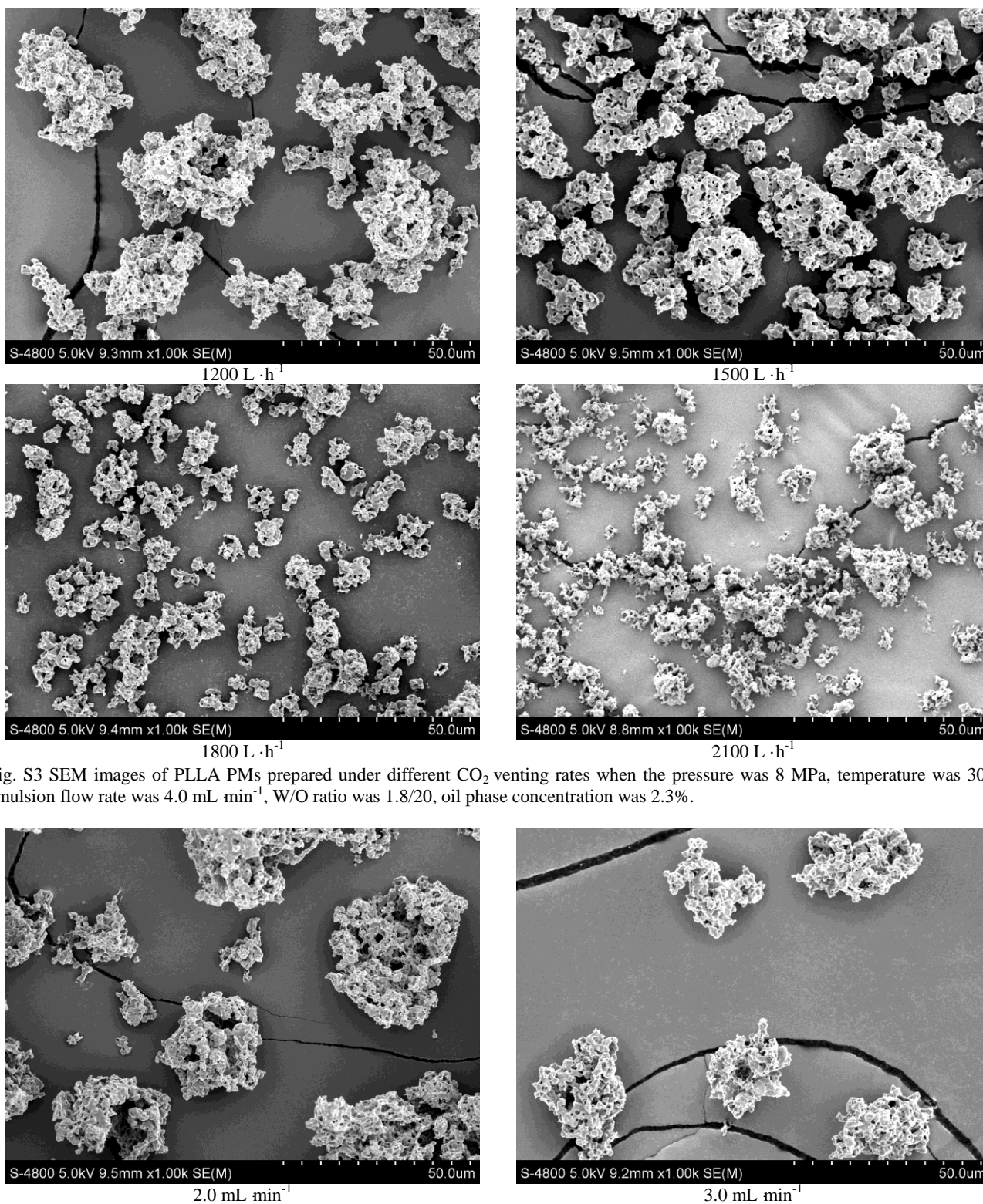


Fig. S3 SEM images of PLLA PMs prepared under different CO<sub>2</sub> venting rates when the pressure was 8 MPa, temperature was 30 °C, emulsion flow rate was 4.0 mL min<sup>-1</sup>, W/O ratio was 1.8/20, oil phase concentration was 2.3%.



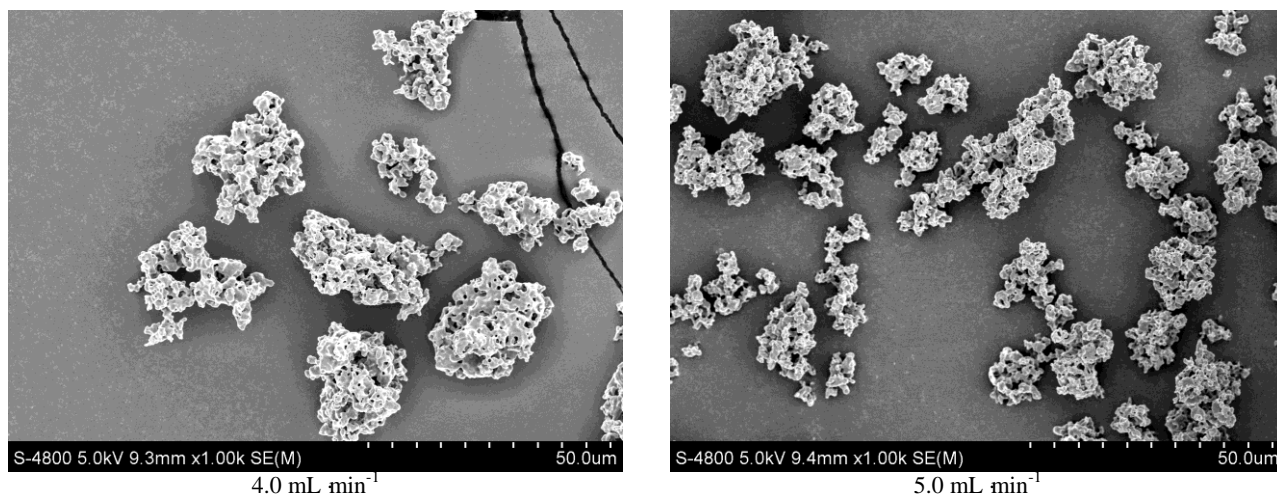


Fig. S4 SEM images of PLLA PMs prepared under different emulsion flow rates when the pressure was 8 MPa, temperature was 30°C, CO<sub>2</sub> venting rate was 1200 L h<sup>-1</sup>, W/O ratio was 1.8/20, oil phase concentration was 2.3%.

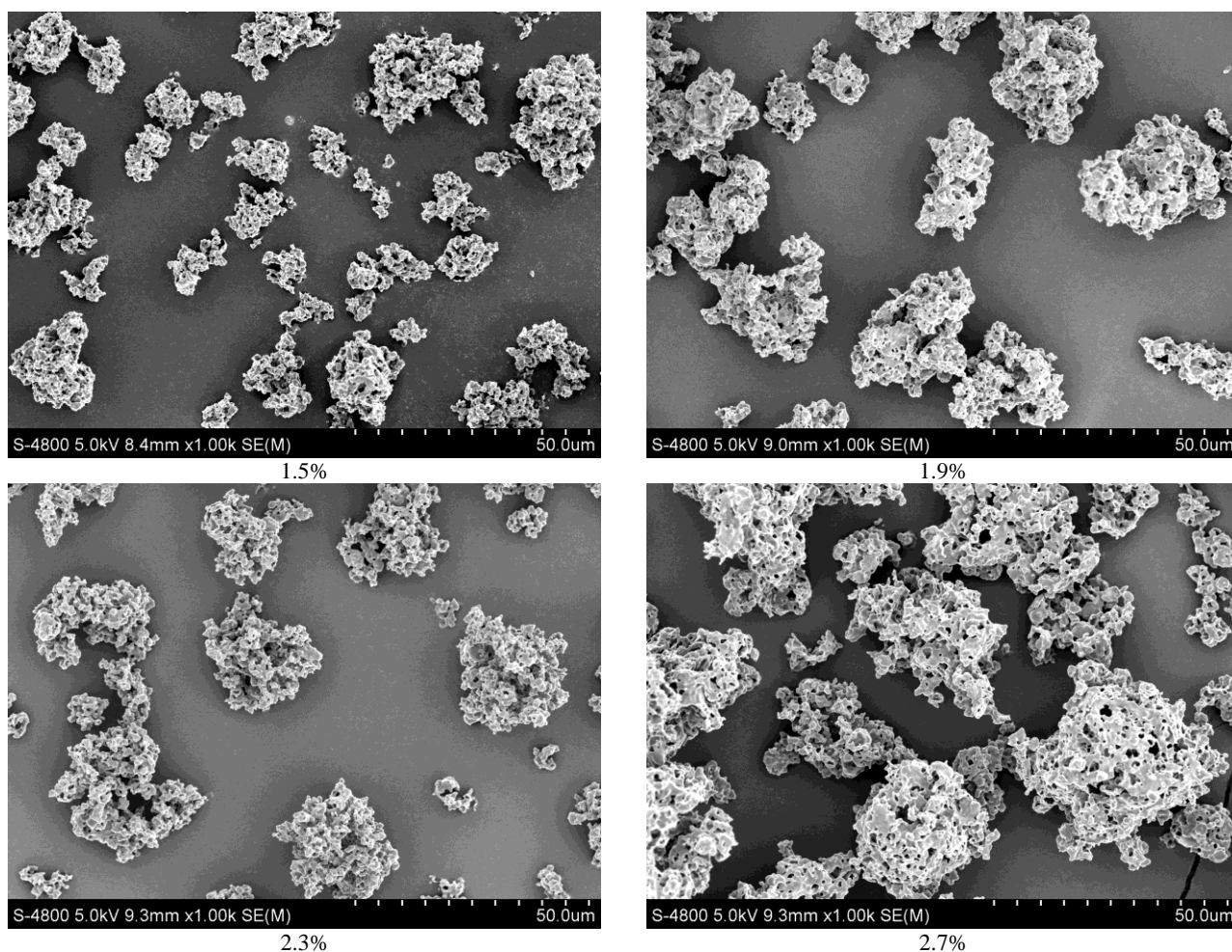
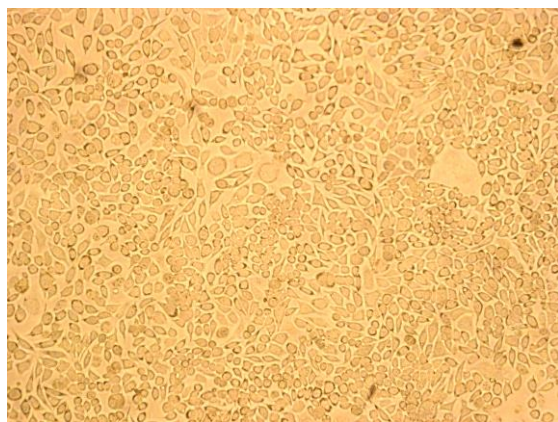
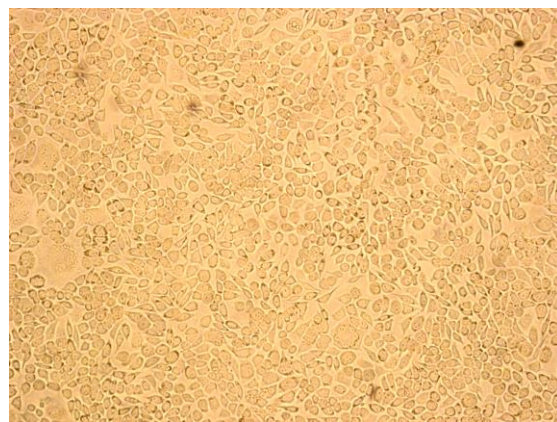


Fig. S5 SEM images of PLLA PMs prepared under different oil phase concentrations when the pressure was 8 MPa, temperature was 30°C, CO<sub>2</sub> venting rate was 1200 L h<sup>-1</sup>, W/O ratios was 1.8/20, emulsion flow rate was 4.0 mL min<sup>-1</sup>

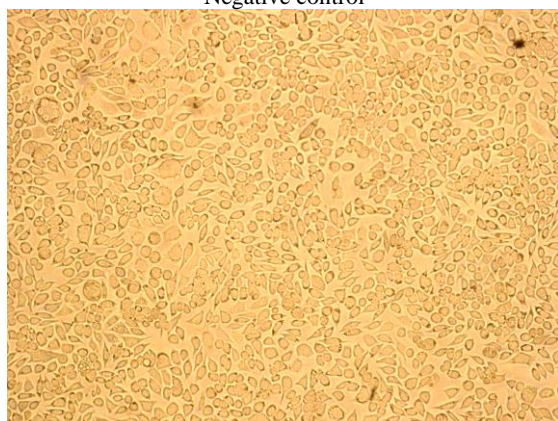




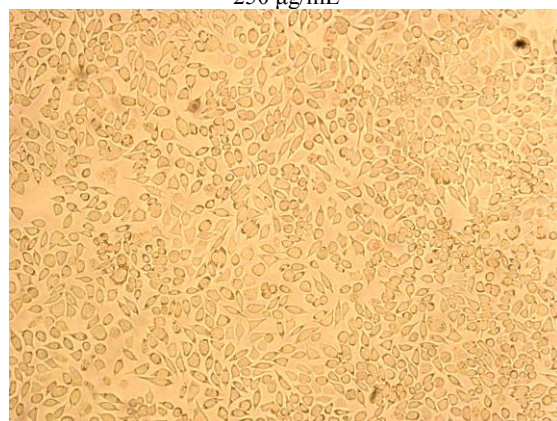
Negative control



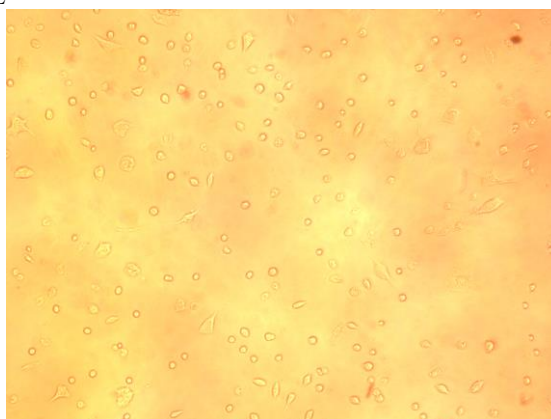
250 µg/mL



500 µg/mL



1000 µg/mL



Positive control

Fig. S6 Optical images of L929 cells cultured for 48 hours.