

Supporting Information

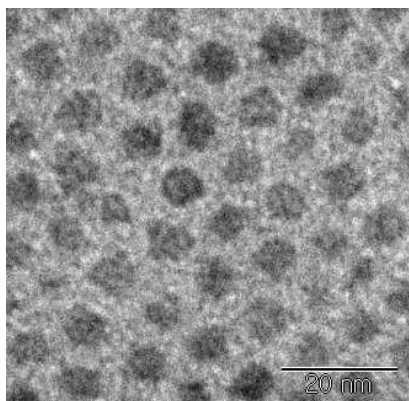


Figure S1. A TEM image of QDs, measured by a TEM machine (JEOL JEM-1011, Japan) at 80 kV (magnification x 600000).

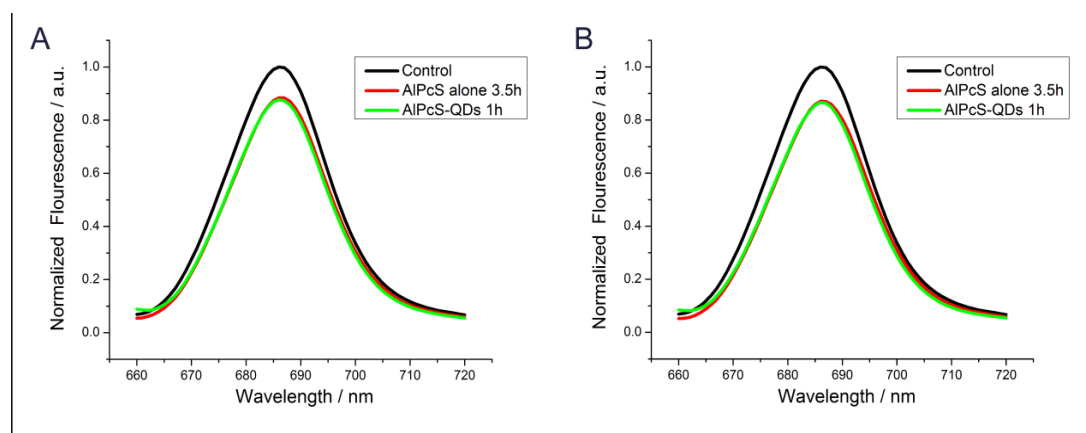


Figure S2. The fluorescence measurements of the medium solutions collected from the cell dishes after $5\mu\text{M}$ free AlPcS (3.5 h) or QD-AlPcS ($0.1\mu\text{M} - 5\mu\text{M}$) (1 h) incubations for KB cells (A) and Hela cells (B). Excitation: 650 nm. Control curves give the fluorescence intensities of original AlPcS ($5\mu\text{M}$) and QD-AlPcS ($0.1\mu\text{M} - 5\mu\text{M}$) in medium solutions (before the incubation for cells).