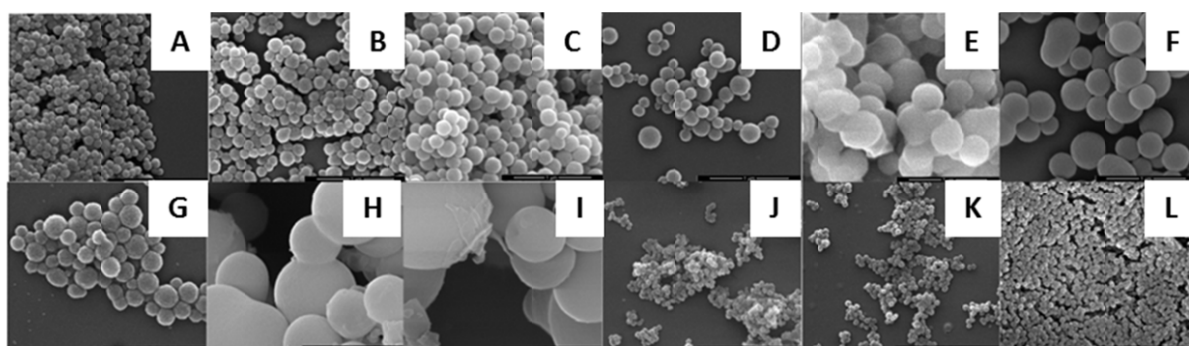


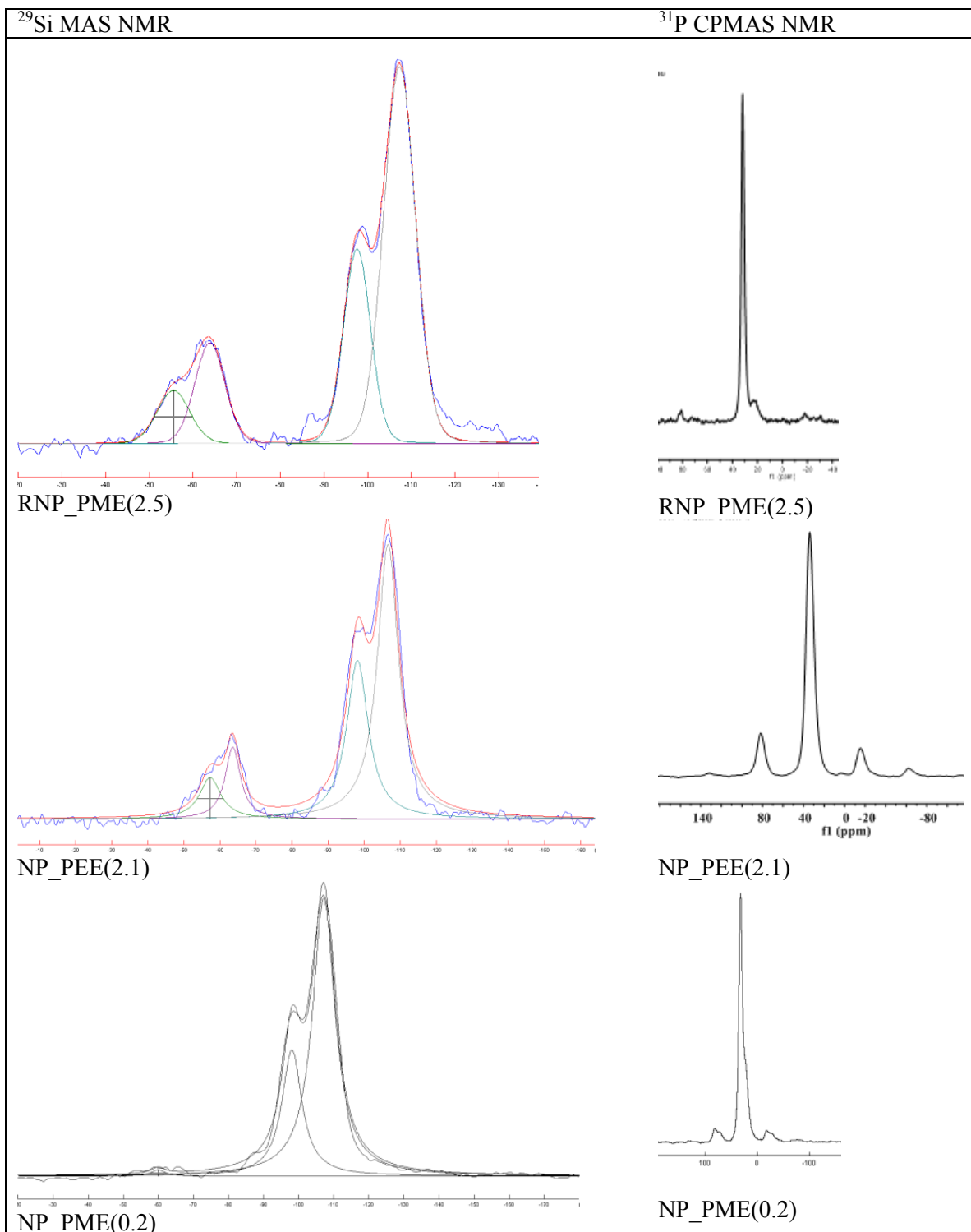
Supplementary information

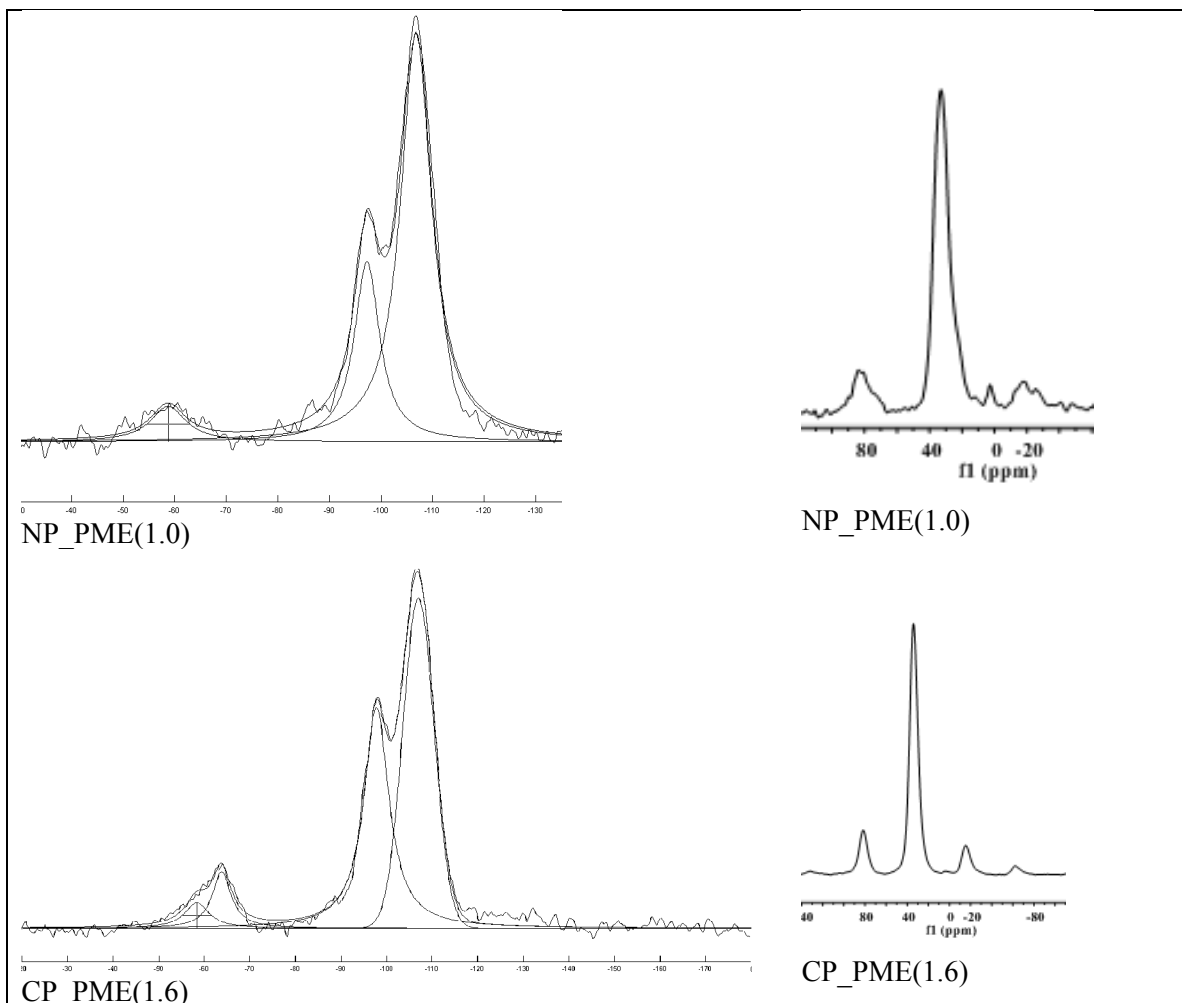
Supplementary information S1: SEM images of particles produced by variation of formulation 2

A RNP_PME(2.5), B-D is alternative ethanol mole ratio 0.0, 2.12, 11; E-G alternative reaction temperatures 20, 40, 60°C; H-I alternative CTAB mol ratios 0.05, 0.1; J-L DMPTMS:TEOS was varied from 0.61 in formulation 2 to 0, 0.1, 0.2 (Scale 1 μm)

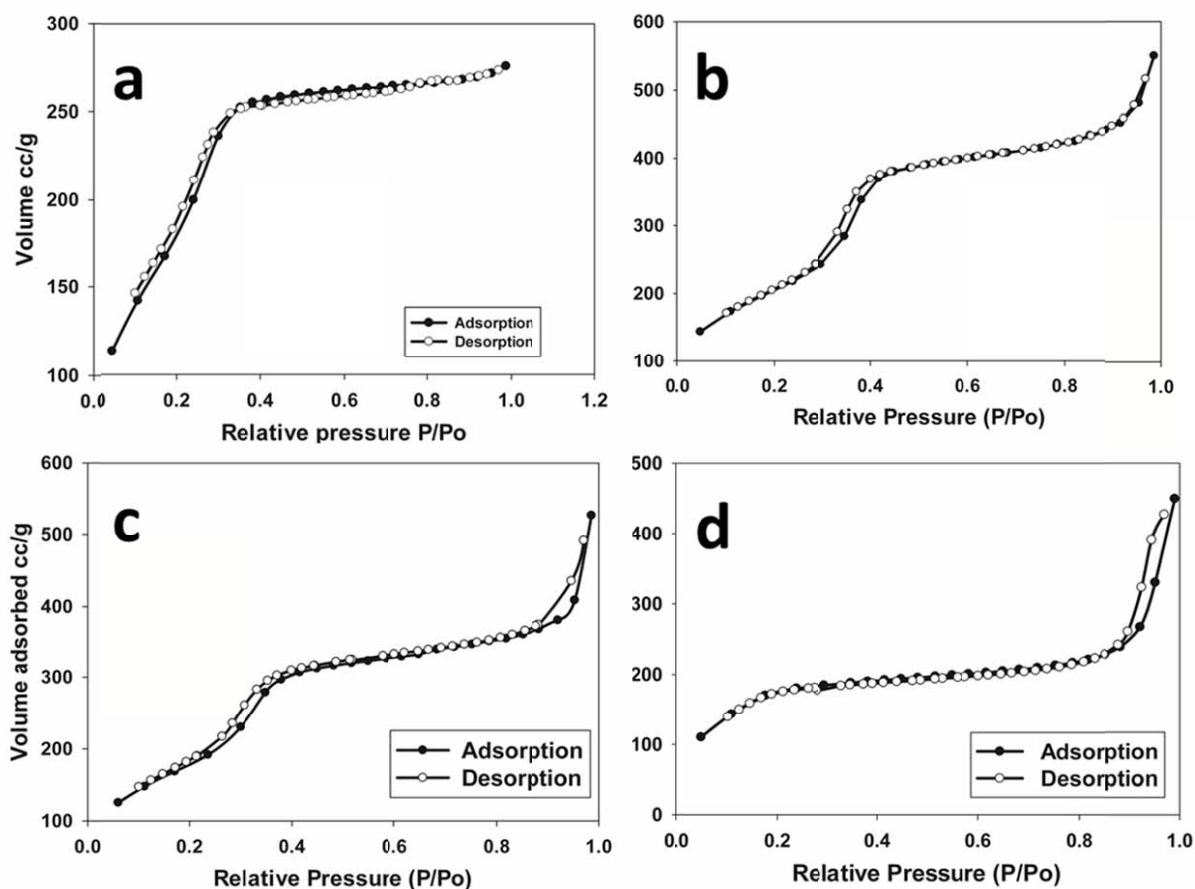


Supplementary Information S2 Solid state ^{29}Si (showing peak fitting) and ^{31}P NMR

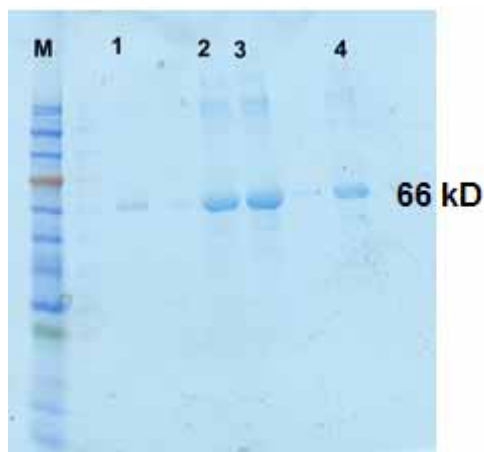




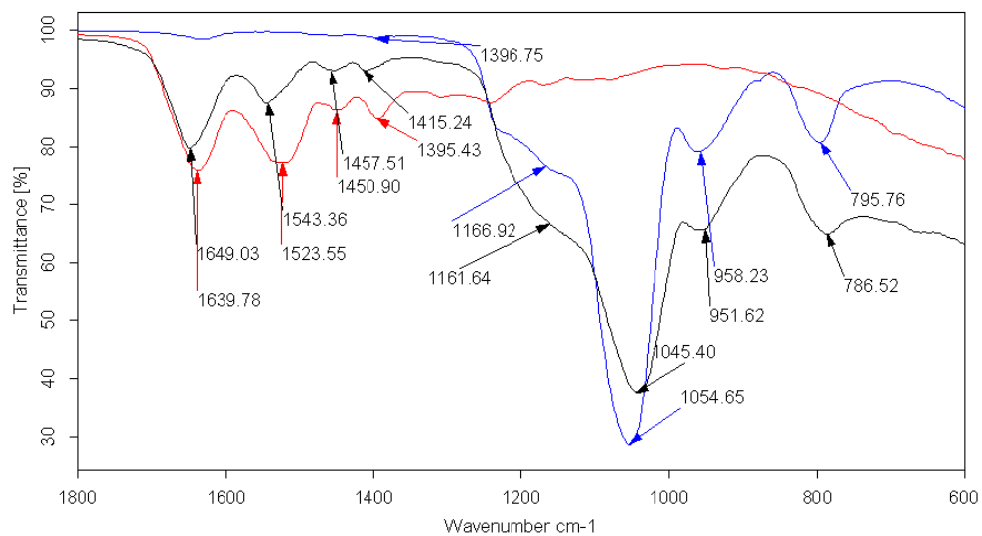
Supplementary information S3: Nitrogen Adsorption isotherms of
a)CP_PME(1.6) ; b)NP_PME(0.2); c)NP_PME(1.0) d)NP_PEE(2.1)



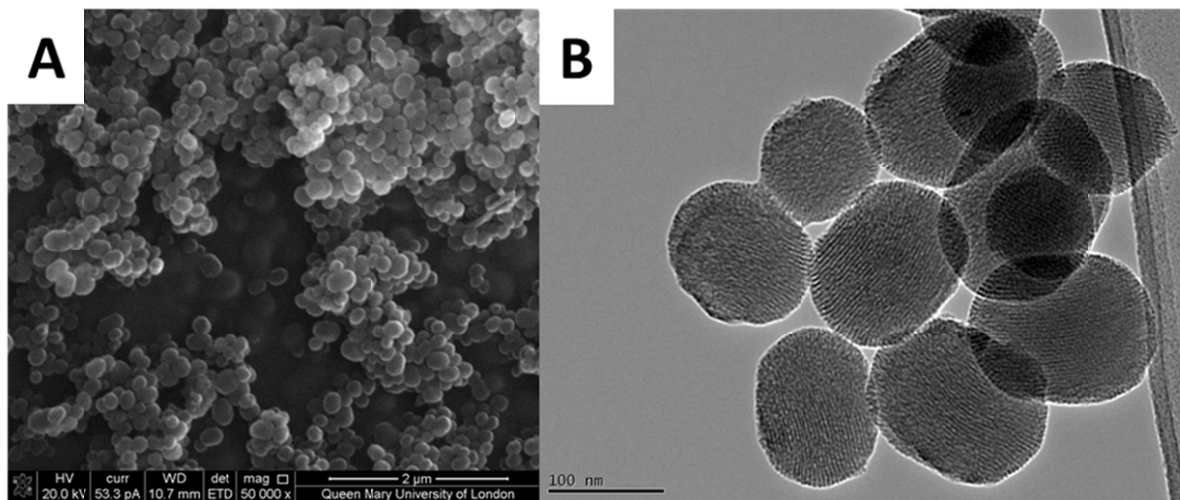
Supplementary information S4: Gel Electrophoresis of BSA from LHS
Marker(M), 1 BSA, 2 BSA@NP_PME(0.2); 3 BSA@NP_PME(1.0); 4
BSA@RNP_PME(2.5)



Supplementary information S5: Infrared spectra of BSA (red) RNP_PME(2.5) (blue) and BSA@RNP_PME(2.5) (black)



Supplementary Information S6 : SEM (Figure A (Scale 2 μ m)) and TEM (Figure B (Scale 100 nm)) of Mesoporous silica nanoparticles(ref 23, main text)



Supplementary information S7: Nitrogen sorption isotherm of Mesoporous silica nanoparticles

